



New ~~Procedures~~  
 7025 N.W. 4th St. - Plantation, Florida 33317

U.S.D.A. SOIL CONSERVATION SERVICE

MAPPING BY  
 HAMRICK AERIAL SURVEYS, INC.  
 CLEARWATER, FLORIDA

Marker Designation SLS-31 & TBM County LEE State FL  
 Located in Sec. 31 Twp. 43 S. Rge. 25 E. U.S.G.S. Quad Map FT MYERS 7.5min.

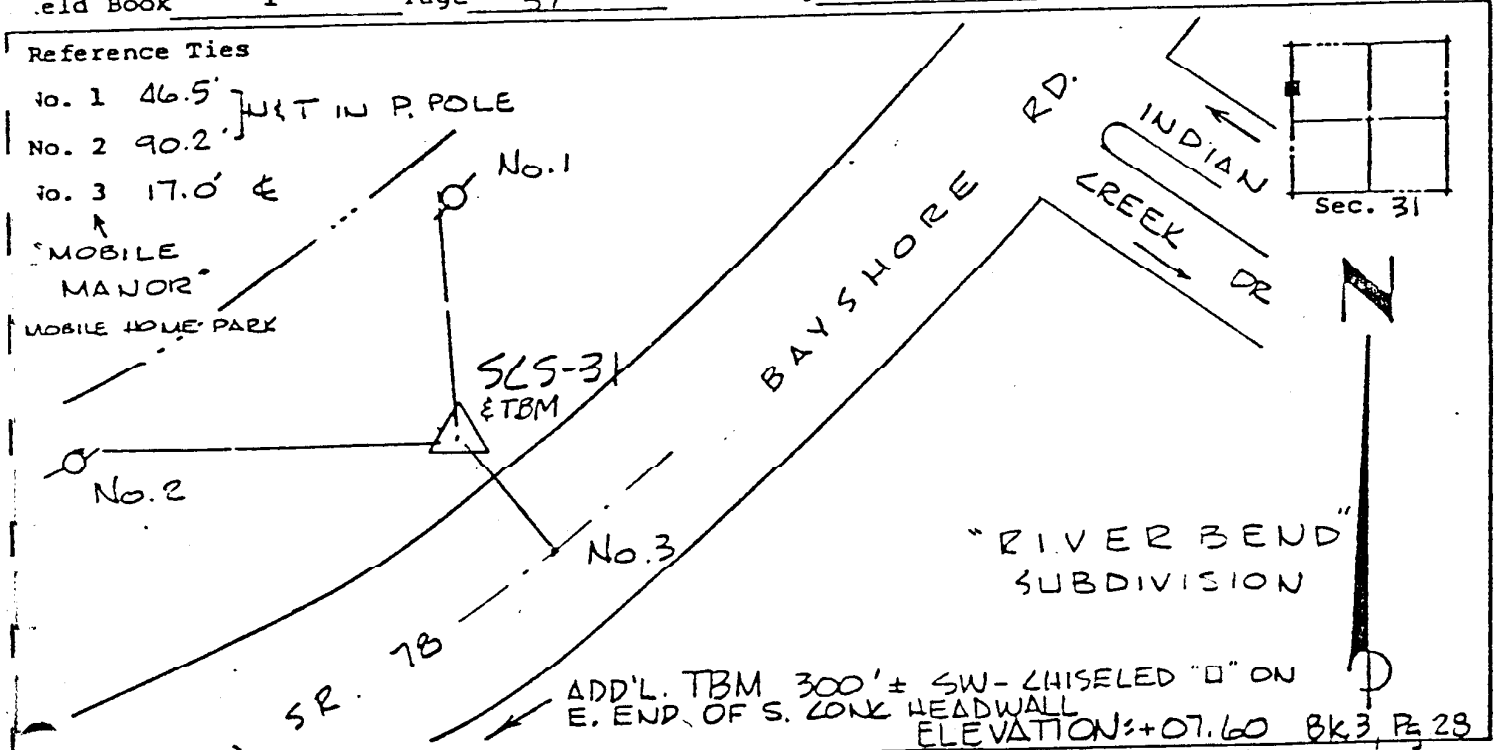
Reach point from INT. OF U.S. 41 / CLEVELAND AV AND S.R. 78 / BAYSHORE  
78 : 60 E. 2.9 MI. ± TO POINT.

Type of Marker 2" LEE CO. DISC, 0.3' BLW. GRD. Date set NOV. - DEC. 19 80  
HORIZONTAL CONTROL originated on 2<sup>ND</sup> order control established by FLA. DOT agency  
 in 1969, on North American 1927 datum.  
 Coordinates: North (y) 256949.973 East (x) 546175.449  
 (feet)  
3<sup>rd</sup> Order State and Zone Florida, Mercator West

Reference Bearings to Station or Object:

Description	Bearing	Distance
<u>SLS-23</u>	<u>N 42° 31' 10.0" E</u>	<u>3853.990</u>
<u>SLS-32</u>	<u>S 61° 39' 41.5" W</u>	<u>11606.552</u>

Field Book 1 Page 37 Sketch by D.W. ALBERTSEN



VERTICAL CONTROL originated on 1<sup>ST</sup> order control established by USCEGS agency  
 in 1966, on National Geodetic Survey Datum of 1929 datum.  
 year of observation 08.06, 3<sup>rd</sup> Order Level Book 2 Page 12