



Fern Associates

7025 NW 4th St. • Plantation, Florida 33317

LEE COUNTY, FLORIDA
U.S.D.A. SOIL CONSERVATION SERVICE

MAPPING BY

HARRICK AERIAL SURVEYS, INC.
CLEARWATER, FLORIDA

Marker Designation SCS-23 & TBM County LEE State FL

located in Sec. 30 Twp. 43 S. Rge. 25 E. U.S.G.S. Quad Map FT. MYERS 7.5min

to reach point from INT. OF US 41 & SR. 78 IN N FT. MYERS. GO E. ON SR. 78
3.6 MI ± TO JOHNSON RD. & MARKER.

Type of Marker 2" LEE CO. DISC, 0.5' BLW. GRD. Date set NOV. - DEC. 19 80

HORIZONTAL CONTROL originated on 2ND order control established by FLA. D.O.T. agency

in 1969, on North American 1927 datum.

Coordinates: North (y) 359790.550 East (x) 545780.132
(feet)

3rd Order

State and Zone Florida, Mercator West

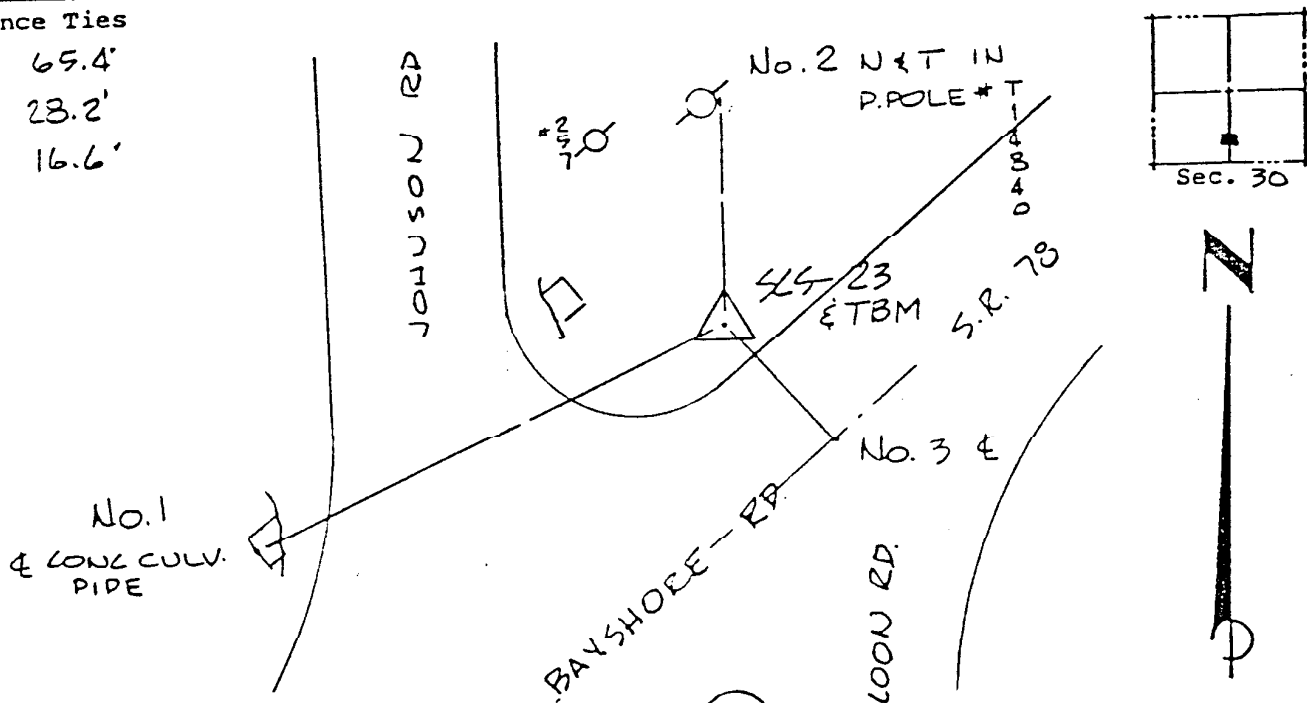
Reference Bearings to Station or Object:

Description	Bearing	Distance
<u>SCS-22</u>	<u>N 47° 27' 34.1" E</u>	<u>3436.863</u>
<u>SCS-24</u>	<u>N 67° 23' 26.9" W</u>	<u>784.261</u>
<u>SCS-31</u>	<u>S 42° 31' 10.0" W</u>	<u>3353.990</u>

Field Book 1 Page 28 Sketch by D.W. ALBERTSEN

Reference Ties

- No. 1 65.4'
- No. 2 23.2'
- No. 3 16.6'



VERTICAL CONTROL originated on 1ST order control established by U.S.C. & G.S. agency

in 1966, on National Geodetic Survey Datum of 1929 datum.

year 09.21

Order

Level Book

7

Page 11