



Deni Associates  
FORT MYERS, FLORIDA

LEE COUNTY, FLORIDA  
AERIAL MAPPING PROJECT  
MAPPING BY: HAMRICK AERIAL SURVEYS, INC.  
CLEARWATER, FLORIDA

DESIGNATION FLA DOT BM 33 COUNTY LEE STATE FL  
LOCATED IN SEC 35 TWP 43 S. RGE 25E USGS QUAD MAP FORT MYERS 7.5 MIN.  
TO REACH SURVEY MARK FROM INT. S.R. 80 + INTERSTATE 75 IN  
SEC. 3-44-25: GO E. ON S.R. 80 ± 1.0 MI. TO MARK.

TYPE OF MARK FLA. DOT DISC. IN CONC DATE SET MAY 19 85

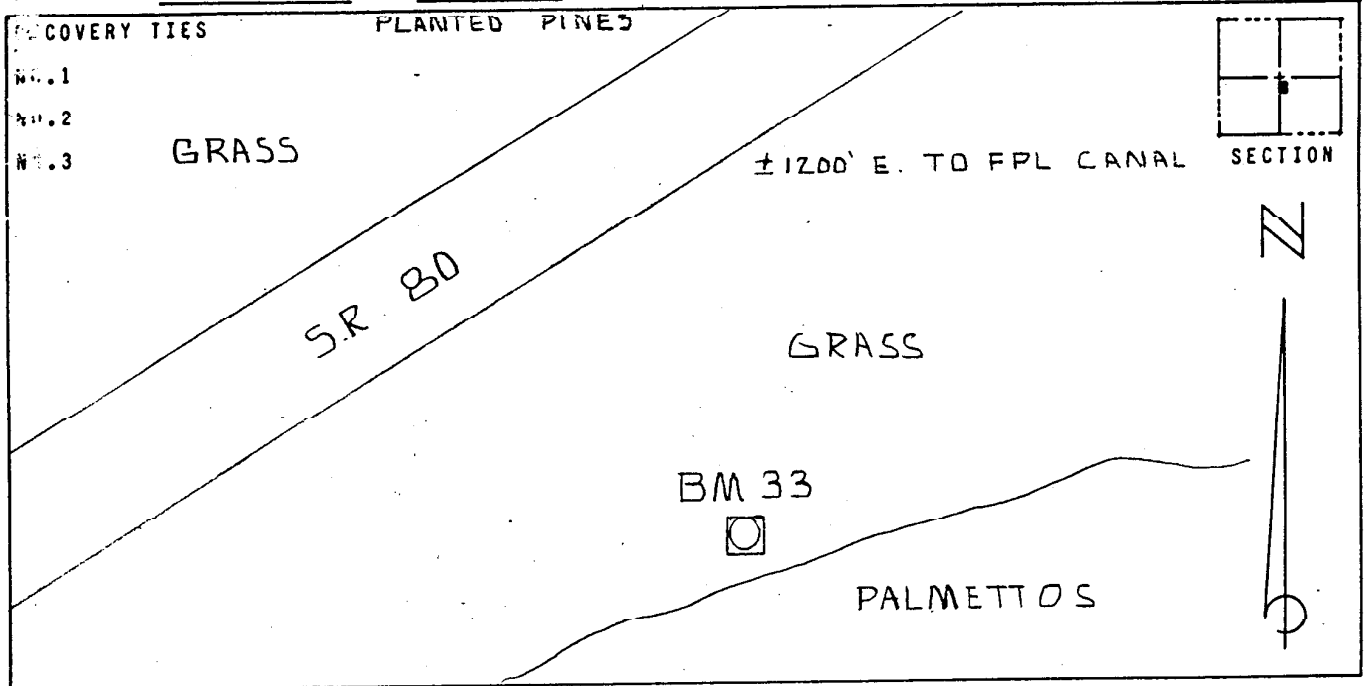
HORIZONTAL CONTROL ORIGINATED ON \_\_\_\_\_ ORDER CONTROL ESTABLISHED BY \_\_\_\_\_  
ON NORTH AMERICAN DATUM OF 1927

COORDINATES (FT) NORTH (Y) \_\_\_\_\_ EAST (X) \_\_\_\_\_  
3RD ORDER STATE AND ZONE FLORIDA, MERCATOR WEST

REFERENCE BEARINGS TO STATION OR OBJECT

DESCRIPTION	BEARING	DISTANCE
_____	_____	_____
_____	_____	_____
_____	_____	_____

FIELD BOOK \_\_\_\_\_ PAGE \_\_\_\_\_ SKETCH BY EVS



VERTICAL CONTROL ORIGINATED ON 1ST ORDER CONTROL ESTABLISHED BY USC + GS  
IN 1966, ON NATIONAL GEODETIC SURVEY DATUM OF 1929

ELEVATION (FT) 06.74, 3RD ORDER LEVEL BOOK \_\_\_\_\_ PAGE \_\_\_\_\_