



New
7025 N.W. 4th St. - Plantation, Florida 33317

U.S.D.A. SOIL CONSERVATION SERVICE

MAPPING BY
HAMRICK AERIAL SURVEYS, INC.
CLEARWATER, FLORIDA

Marker Designation SCS - 22 & TBM County LEE State FL
Located in Sec. 29 Twp. 43 S. Rge. 25 E. U.S.G.S. Quad Map FT. MYERS 7.5min.

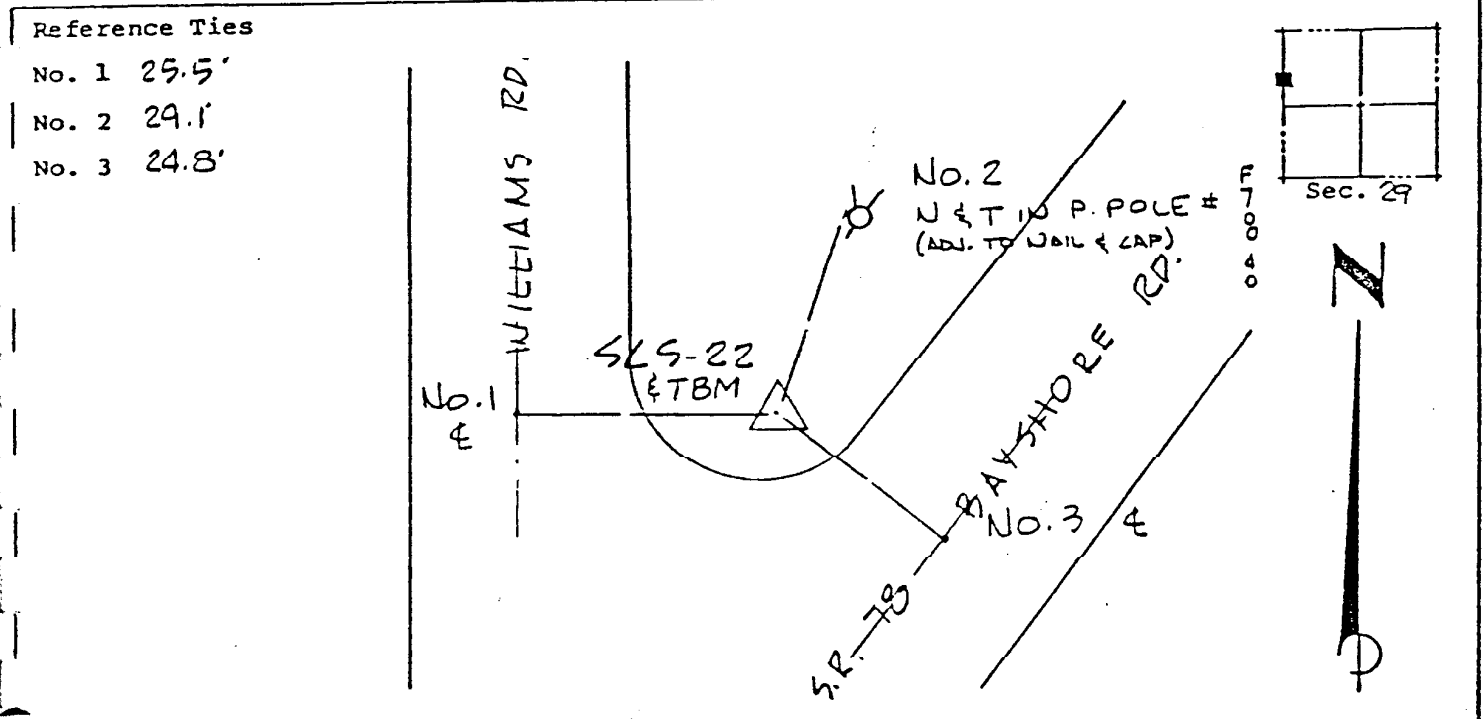
To reach point from INT. OF US 41 & SR. 78 IN N. FT. MYERS. GO E. ON SR. 78
4.25 MI.± TO WILLIAMS RD. & MARKER.

Type of Marker 2" LEE CO. DISC, 0.2' BLW. GRD. Date set NOV. - DEC. 19 80
HORIZONTAL CONTROL originated on 2ND order control established by FLA. D.O.T. agency
in 1969, on North American 1927 datum.
Coordinates: North (y) 862249.475 East (x) 551459.771
(feet) 3rd Order State and Zone Florida, Mercator West

Reference Bearings to Station or Object:

Description	Bearing	Distance
<u>SCS - 21</u>	<u>N 42° 48' 37.3" E</u>	<u>2565.723</u>
<u>SCS - 23</u>	<u>S 47° 27' 34.1" W</u>	<u>3636.863</u>

Field Book 1 Page 27 Sketch by D. W. ALBERTSEN



VERTICAL CONTROL originated on 1ST order control established by U.S.C. & G.S. agency
in 1966, on National Geodetic Survey Datum of 1929 datum.
Elevation 08.85, 3rd Order Level Book 2 Page 11