



Dani Associates

7025 N.W. 4th St. · Plantation, Florida 33317

LEE COUNTY, FLORIDA  
U.S.D.A. SOIL CONSERVATION SERVICE

MAPPING BY  
HAMRICK AERIAL SURVEYS, INC.  
CLEARWATER, FLORIDA

Marker Designation TBM SV-2 County LEE State FL  
Located in Sec. 24 Twp. 43 S. Rge. 25 E. U.S.G.S. Quad Map FORT MYERS 7.5mi

To reach point from \_\_\_\_\_  
AT INT OF RTE 78 & 31 7.0 MI NE OF FT. MYERS. AT NE. ENTRANCE  
TO FAIR GROUNDS.

Type of Marker CHISELED "D" Date set NOV. - DEC. 19 80

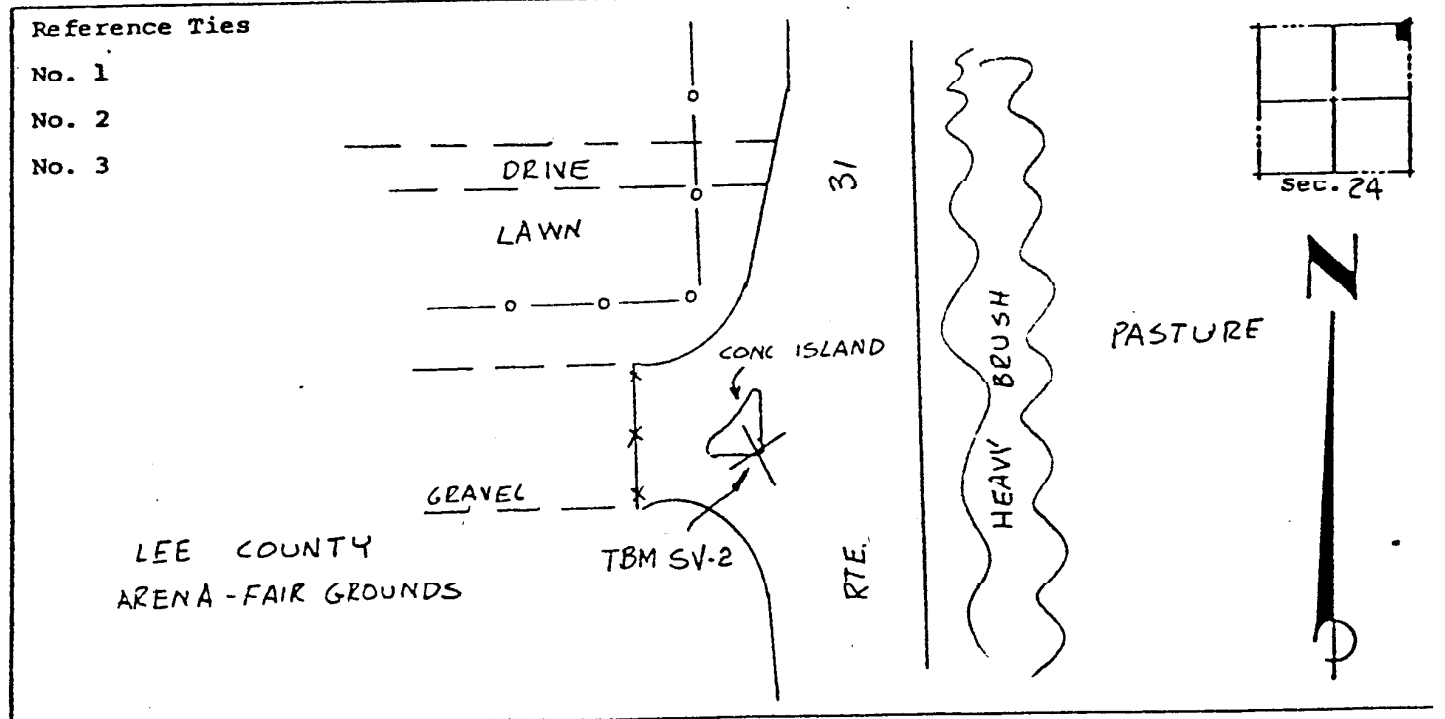
HORIZONTAL CONTROL originated on \_\_\_\_\_ order control established by \_\_\_\_\_ agency  
in \_\_\_\_\_, on \_\_\_\_\_ North American 1927 datum.

Coordinates: North (y) \_\_\_\_\_ East (x) \_\_\_\_\_  
(feet) \_\_\_\_\_  
3rd Order State and Zone Florida, Mercator West

Reference Bearings to Station or Object:

Description	Bearing	Distance

Field Book 1 Page \_\_\_\_\_ Sketch by B.R. HOMOLA



VERTICAL CONTROL originated on 1st order control established by U.S.C. & G.S. agency

in 1966, on National Geodetic Survey Datum of 1929 datum.  
year  
Elevation 08.24, 3rd Order Level Book 2 Page 7