



Dani Associates

7025 N.W. 4th St. - Plantation, Florida 33317

LEE COUNTY, FLORIDA
U.S.D.A. SOIL CONSERVATION SERVICE

MAPPING BY

HAMRICK AERIAL SURVEYS, INC.
CLEARWATER, FLORIDA

Marker Designation SCS-15 & TBM County LEE State FL
Located in Sec. 24 Twp. A3 S. Rye. 25 E U.S.C.S. Quad Map FT. MYERS 7.5min.

To reach point from INT. OF US 41 & SR. 78 IN N. FT. MYERS. GO E. ON SR. 78
8.85 MI. ± TO MARKER.

Type of Marker 2" LEE CO. DIX, 0.4' BLW. GRD. Date set NOV. - DEC. 19 80

HORIZONTAL CONTROL originated on 2ND order control established by FLA. D.O.T. agency

in 1969, on North American 1927 datum.

Coordinates: North (y) 865466.188 East (x) 574491.927
(feet)

3rd Order

State and Zone Florida, Mercator West

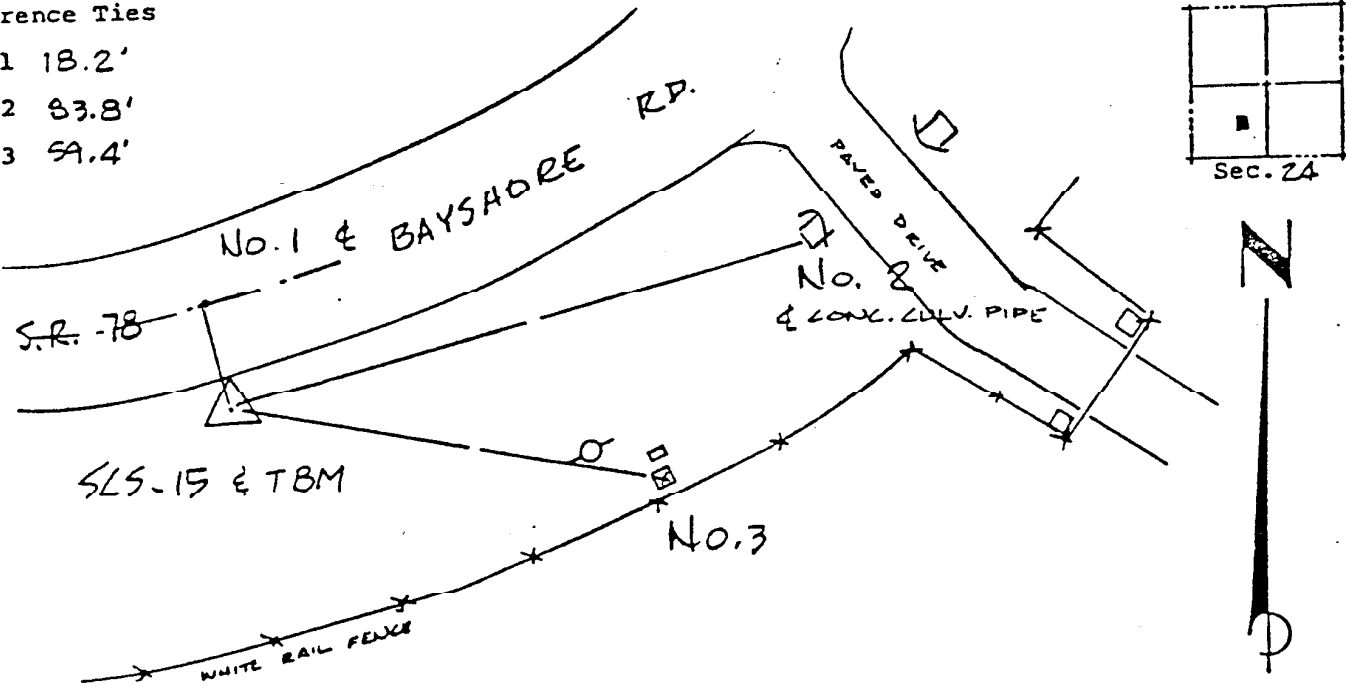
Reference Bearings to Station or Object:

Description	Bearing	Distance
<u>SCS-14</u>	<u>N 60° 39' 27.6" E</u>	<u>1337.266</u>
<u>SCS-16</u>	<u>S 87° 37' 59.1" W</u>	<u>1723.265</u>

Field Book 1 Page 18 Sketch by D.W. ALBERTSEN

Reference Ties

- No. 1 18.2'
- No. 2 83.8'
- No. 3 59.4'



VERTICAL CONTROL originated on 1ST order control established by U.S.C. & G.S. agency

in 1966, on National Geodetic Survey Datum of 1929 datum.

year 1966
Elevation 08.68, 3rd Order Level Book 2 Page 8