



Dene Associates
 7025 N.W. 4th St. • Plantation, Florida 33317

LEE COUNTY, FLORIDA
 U.S.D.A. SOIL CONSERVATION SERVICE
 MAPPING BY
 HAMRICK AERIAL SURVEYS, INC.
 CLEARWATER, FLORIDA

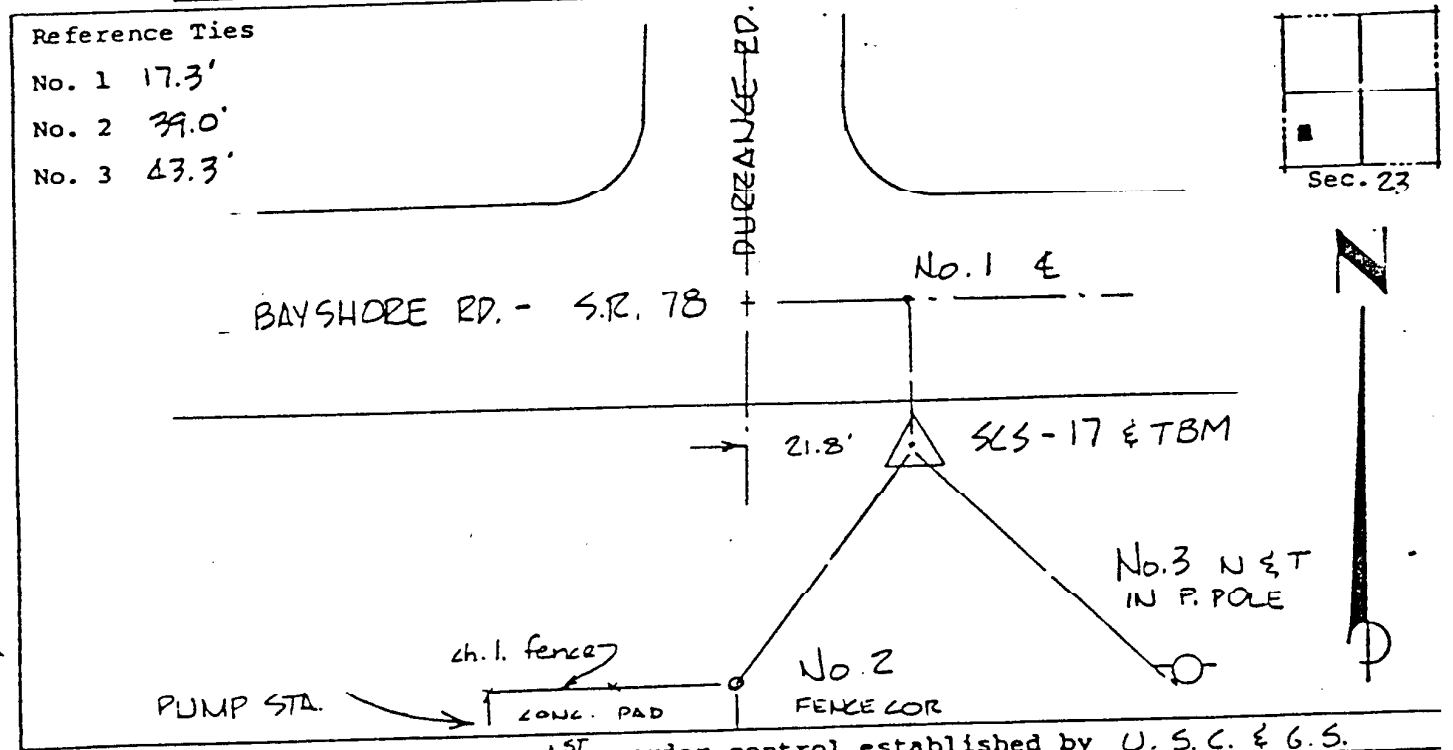
Marker Designation SLS-17 & TBM County LEE State FL
 Located in Sec. 23 Twp. 43 S. Rge. 25 E. U.S.G.S. Quad Map FT. MYERS 7.5mi
 To reach point from INT. OF US. 41 & SR. 78 IN N. FT. MYERS. GO E. ON SR. 78
6.25 MI. ± TO DURRANCE RD. & MARKER.

Type of Marker 2" LEE CO. DISC, 03' BLW. GRD. Date set NOV. - DEC. 19 80
 HORIZONTAL CONTROL originated on 2ND order control established by FLA. D.O.T. agency
 in 1969, on North American 1927 datum.
 Coordinates: North (y) 865406.721 East (x) 567994.858
 (feet) 3rd Order State and Zone Florida, Mercator West

Reference Bearings to Station or Object:

Description	Bearing	Distance
<u>SLS-16</u>	<u>S 89° 51' 34.5" E</u>	<u>4775.288</u>
<u>SLS-18</u>	<u>N 89° 59' 12.6" W</u>	<u>6393.641</u>

Field Book 1 Page 20 Sketch by D.W. ALBERTSEN



VERTICAL CONTROL originated on 1ST order control established by U. S. C. & G. S. agency
 in 1966, on National Geodetic Survey Datum of 1929 datum.
 year 12 71 2nd Order Level Book 2 Page 9