



7025 N.W. 4th St. - Plantation, Florida 33317

U.S.D.A. SOIL CONSERVATION SERVICE

MAPPING BY

HAMRICK AERIAL SURVEYS, INC.  
CLEARWATER, FLORIDA

Marker Designation TBM SV-11 County LEE State FL

Located in Sec. 22 Twp. 43 S. Rge. 25 E. U.S.G.S. Quad Map FORT MYERS 7.5mi

To reach point from INT. OF US. 41 & RTE. 78 IN N. FT. MYERS. GO E. ON RTE. 78  
7.0 MI ± TO NALLE RD. & MARKER.

Type of Marker 8" SPIKE IN SW. FACE OF P. POLE Date set NOV. - DEC. 19 80

HORIZONTAL CONTROL originated on \_\_\_\_\_ order control established by \_\_\_\_\_ agency

in \_\_\_\_\_, on \_\_\_\_\_ North American 1927 datum.

Coordinates: North (y) \_\_\_\_\_ East (x) \_\_\_\_\_  
(feet)

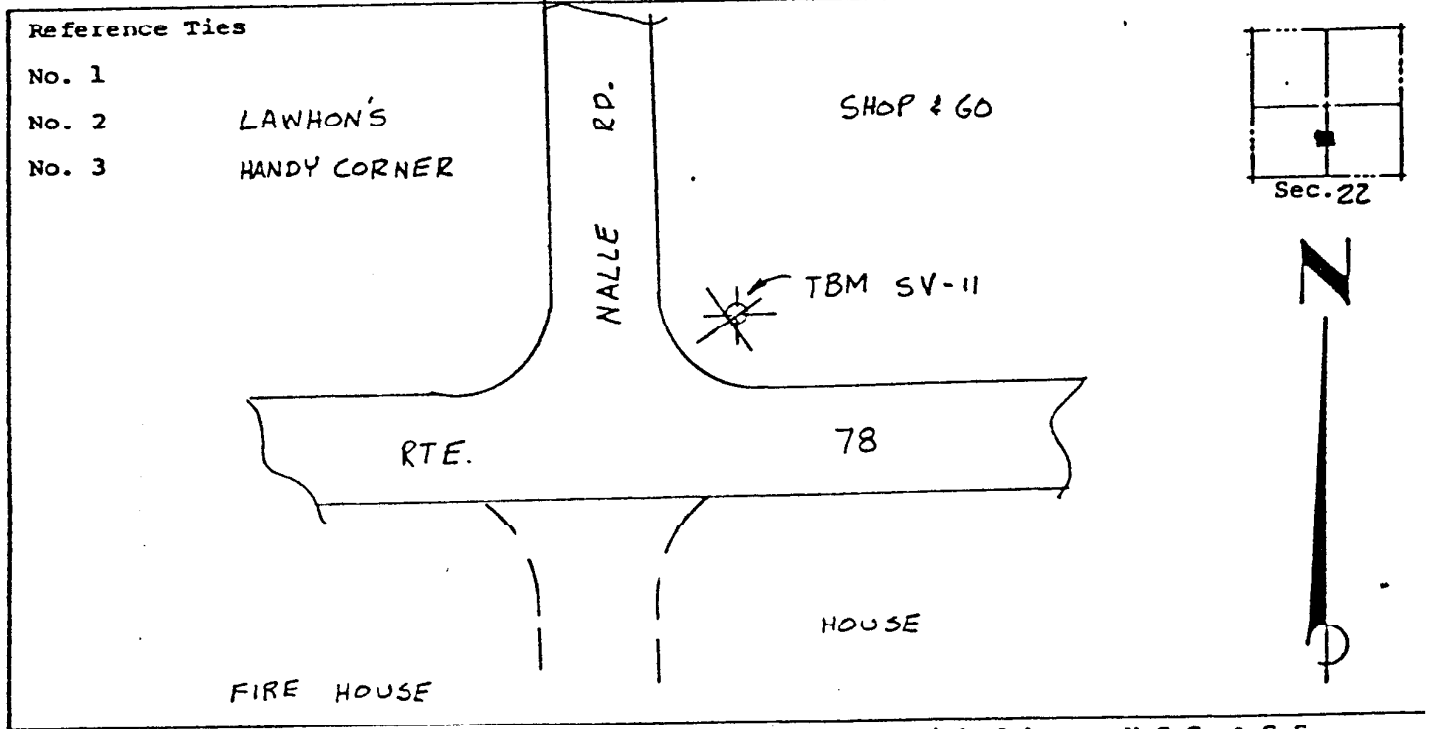
3rd Order

State and Zone Florida, Mercator West

Reference Bearings to Station or Object:

Description	Bearing	Distance

Field Book 1 Page \_\_\_\_\_ Sketch by B. R. HOMOLA



- Reference Ties
- No. 1
  - No. 2      LAWHON'S
  - No. 3      HANDY CORNER

VERTICAL CONTROL originated on 1st order control established by U.S.C. & G.S. agency

in 1966, on National Geodetic Survey Datum of 1929 datum.

Elevation 07.61, 3rd Order Level Book 2 Page 9