



Terri Associates
7025 N.W. 4th St. - Plantation, Florida 33317

LEE COUNTY, FLORIDA
U.S.D.A. SOIL CONSERVATION SERVICE

MAPPING BY
HAMRICK AERIAL SURVEYS, INC.
CLEARWATER, FLORIDA

Marker Designation SL5-14 & TBM County LEE State FL
Located in Sec. 24 Twp. 43S Rge. 25E U.S.G.S. Quad Map FT. MYERS 7.5min.
To reach point from INT. OF US 41 & SR. 78 IN N. FT. MYERS. GO E. ON SR. 78
0.1 MI. ± TO MARKER.

Type of Marker 2" LEE CD. DISC, 0.3" BLW. GRD. Date set NOV. - DEC. 19 80
HORIZONTAL CONTROL originated on 2ND order control established by FLA. D.O.T. agency
in 1969, on North American 1927 datum.
Coordinates: North (y) 866121.484 East (x) 579657.633
(feet) 3rd Order State and Zone Florida, Mercator West

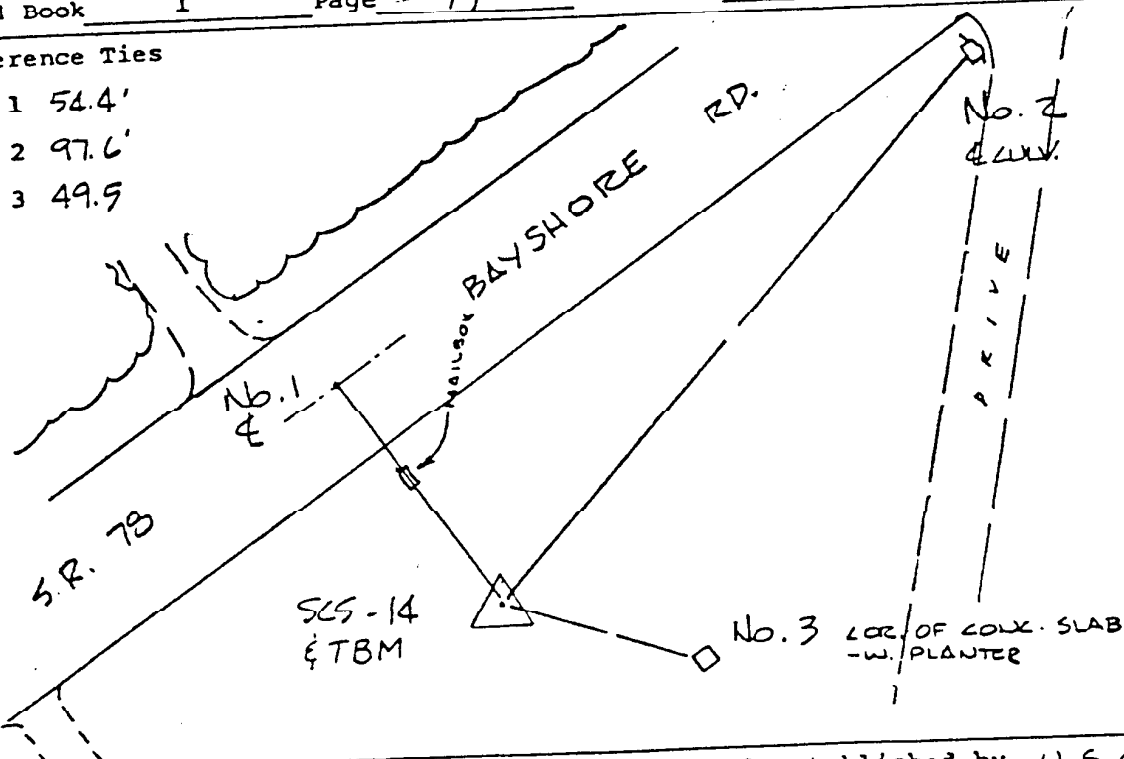
Reference Bearings to Station or Object:

Description	Bearing	Distance
<u>NGS "HALGRIM"</u>	<u>S 41° 18' 41.5" E</u>	<u>418.216</u>
<u>SL5-15</u>	<u>S 60° 39' 27.6" W</u>	<u>1337.266</u>

Field Book 1 Page 17 Sketch by D.W. ALBERTSEN

Reference Ties

- No. 1 54.4'
- No. 2 97.6'
- No. 3 49.9'



VERTICAL CONTROL originated on 1ST order control established by U.S.C. & G.S. agency
in 1966, on National Geodetic Survey Datum of 1929 datum.
year 0394 3rd Order Level Book 2 Page 8