



7025 N.W. 4th St. • Plantation, Florida 33317

U.S.D.A. SOIL CONSERVATION SERVICE  
MAPPING BY  
HAMRICK AERIAL SURVEYS, INC.  
CLEARWATER, FLORIDA

Marker Designation TBM SV-25 County LEE State FL

Located in Sec. 20 Twp. 43 S. Rge. 25 E U.S.G.S. Quad Map FORT MYERS 7.5mi

To reach point from INT. OF US 41 & SR 78 IN N. FT. MYERS. GO E. ON SR. 78  
3.45 MI.± TO SLATER RD. THENCE N. 2.0 MI.± TO TRANSMISSION LINE.  
THENCE E. ALONG TRANSMISSION LINE 0.6 MI.± TO MARKER.

Type of Marker 8" SPIKE IN N. FACE OF WOOD F/P. Date set NOV. - DEC. 19 80

HORIZONTAL CONTROL originated on \_\_\_\_\_ order control established by \_\_\_\_\_ agency

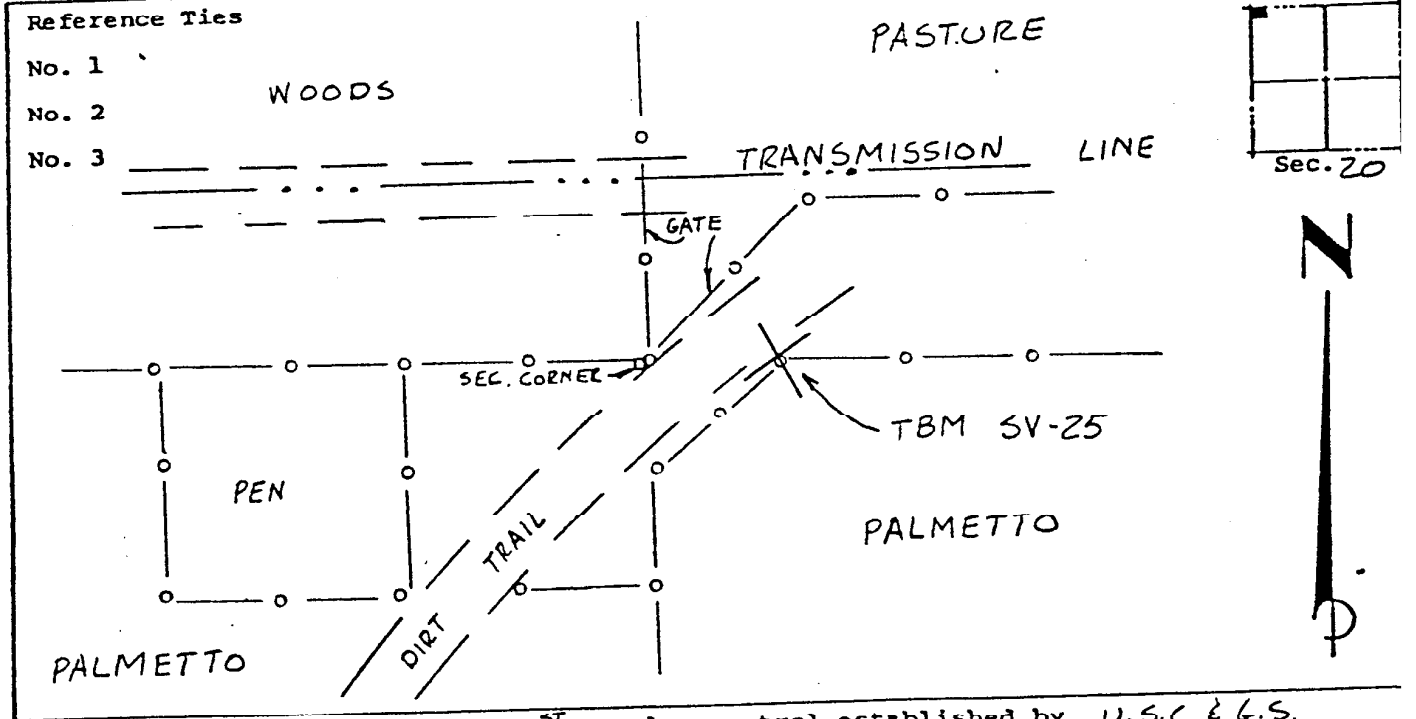
in \_\_\_\_\_, on \_\_\_\_\_ North American 1927 \_\_\_\_\_ datum.

Coordinates: North (y) \_\_\_\_\_ East (x) \_\_\_\_\_  
(feet)

Reference Bearings to Station or Object: \_\_\_\_\_ State and Zone Florida, Mercator West

Description	Bearing	Distance

Field Book 1 Page \_\_\_\_\_ Sketch by B.R. HOMOLA



VERTICAL CONTROL originated on 1<sup>st</sup> order control established by U.S.C. & G.S. agency

in 1966, on \_\_\_\_\_ National Geodetic Survey Datum of 1929 \_\_\_\_\_ datum.

year \_\_\_\_\_ Elevation 17.07, \_\_\_\_\_ 3rd Order Level Book 2 Page 42