



Feni Associates
7025 N.W. 4th St. - Plantation, Florida 33317

LEE COUNTY, FLORIDA
U.S.D.A SOIL CONSERVATION SERVICE

MAPPING BY
HAMRICK AERIAL SURVEYS, INC.
CLEARWATER, FLORIDA

Marker Designation SCS-21 & TBM County LEE State FL
Located in Sec. 20 Twp. 43 S. Rge. 25 E. U.S.G.S. Quad Map FT. MYERS 7.5min

To reach point from INT. OF US. 41 & SR. 78 IN N: FT. MYERS. GO E. ON SR. 78
4.75 MI. ± TO OLD BAYSHORE RD. & MARKER.

Type of Marker 2" LEE CO. DISC, 0.4' BLW. GRD. Date set NOV. - DEC. 19 80

HORIZONTAL CONTROL originated on 2ND order control established by FLA. D.O.T. agency
in 1969, on North American 1927 datum.

Coordinates: North (y) 864131.708 East (x) 553203.370
(feet)

3rd Order State and Zone Florida, Mercator West

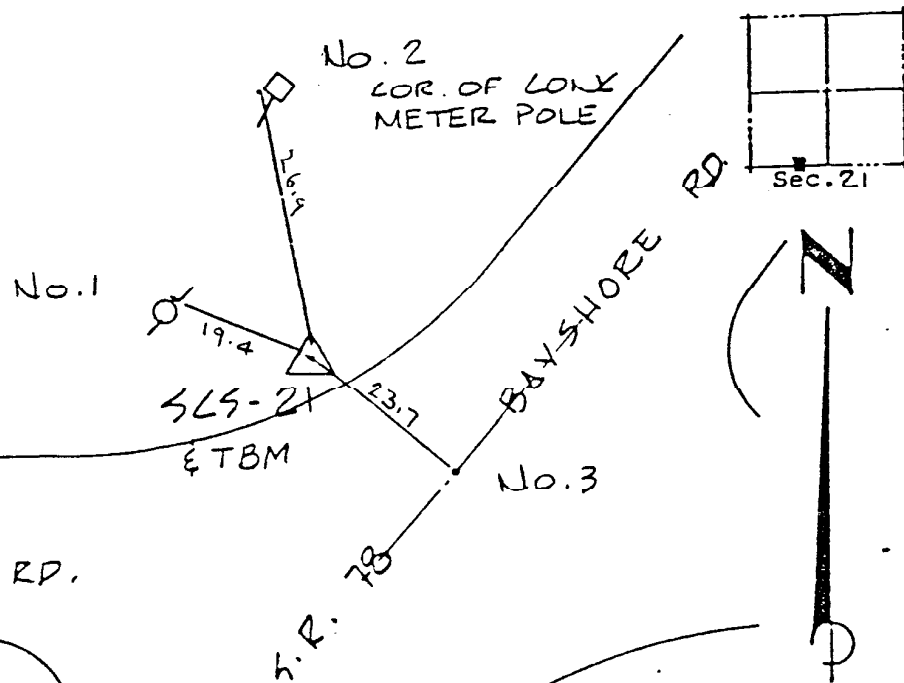
Reference Bearings to Station or Object:

Description	Bearing	Distance
<u>SCS-20</u>	<u>N 89° 50' 56.4" E</u>	<u>3481.955</u>
<u>SCS-22</u>	<u>S 42° 48' 37.3" W</u>	<u>2565.723</u>

Field Book 1 Page 26 Sketch by D.W. ALBERTSEN

Reference Ties

- No. 1 19.4'
- No. 2 26.9'
- No. 3 23.7'



VERTICAL CONTROL originated on 1ST order control established by U.S.C. & G.S. agency

in 1966, on National Geodetic Survey Datum of 1929 datum.
year 11.50 E.L. 11.50 3rd Order Level Book 2 Page 10