



Jeni Associates

7025 N.W. 4th St. • Plantation, Florida 33317

LEE COUNTY, FLORIDA  
U.S.D.A. SOIL CONSERVATION SERVICE

MAPPING BY

HARRICK AERIAL SURVEYS, INC.  
CLEARWATER, FLORIDA

Marker Designation SCS-20 & TBM County LEE State FL  
located in Sec. 20 Twp. 43 S. Rge. 25 E. U.S.G.S. Quad Map FT. MYERS 7.5min.

To reach point from INT. OF US 41 & SR. 78 IN N. FT. MYERS. GO E. ON SR. 78  
4.75 MI.± TO OLD BAYSHORE RD. THENCE E. 0.65 MI.± TO CHURCH DR.  
& MARKER.

Type of Marker 2" LEE CO. DISK, 0.1' BLW. GRD. Date set NOV. - DEC. 19 80

HORIZONTAL CONTROL originated on 2<sup>ND</sup> order control established by FLA. D.O.T.  
agency

on 1969 year, on North American 1927 datum.

Coordinates: North (y) 664140.884 East (x) 556689.344  
(feet)

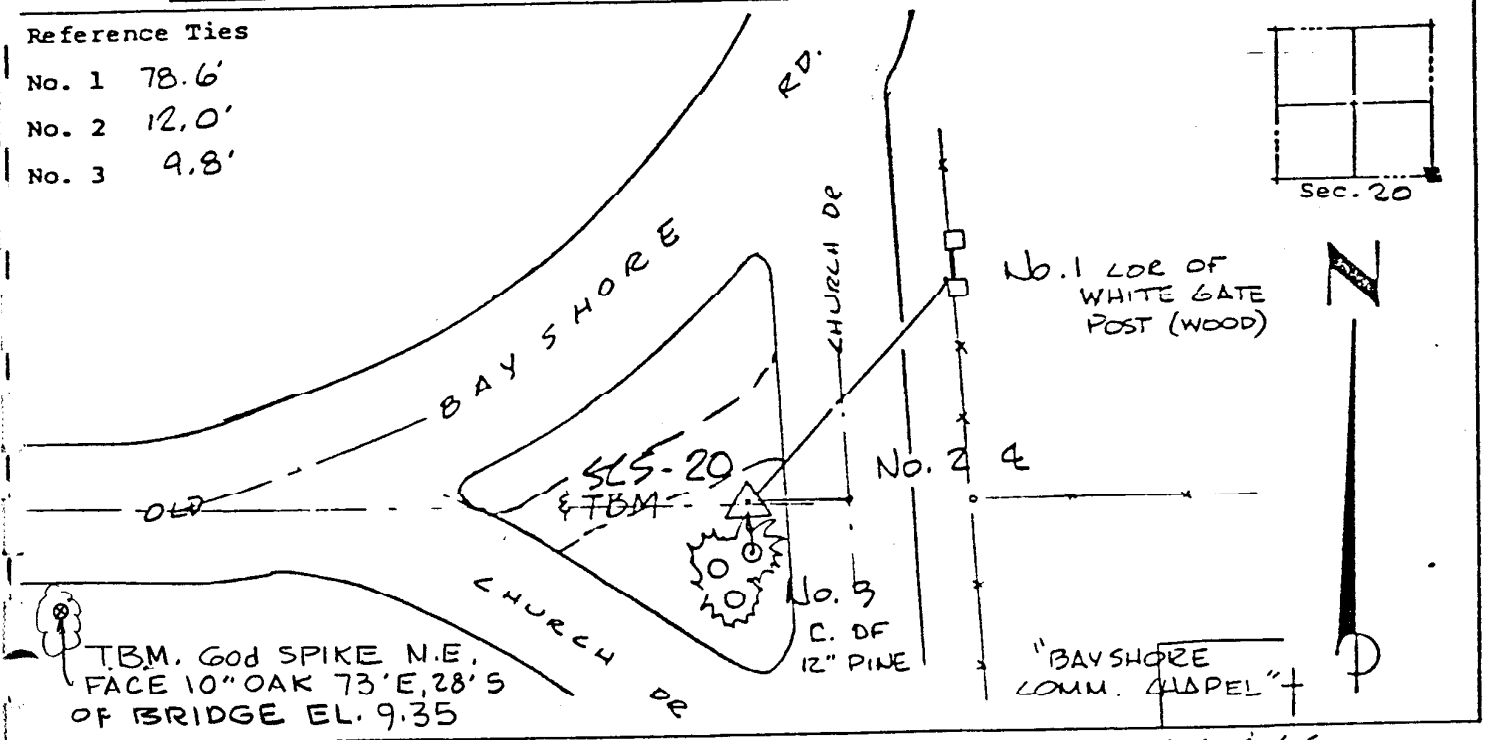
3rd Order State and Zone Florida, Mercator West

Reference Bearings to Station or Object:

Description	Bearing	Distance
<u>SCS-19</u>	<u>N 0° 15' 01.7" E</u>	<u>1354.515</u>
<u>SCS-21</u>	<u>S 89° 50' 56.4" W</u>	<u>3481.985</u>

Field Book 1 Page 25 Sketch by D.W. ALBERTSEN

- Reference Ties
- No. 1 78.6'
  - No. 2 12.0'
  - No. 3 9.8'



VERTICAL CONTROL originated on 1<sup>ST</sup> order control established by U.S.C. & G.S. agency

on 1966 year, on National Geodetic Survey Datum of 1929 datum.  
09.83 EL 9.83 3rd Order Level Book 2 Page 35