



Went Associates
7025 N.W. 4th St. - Plantation, Florida 33317

LEE COUNTY, FLORIDA
U.S.D.A. SOIL CONSERVATION SERVICE
MAPPING BY
HAMRICK AERIAL SURVEYS, INC.
CLEARWATER, FLORIDA

Marker Designation USCGS BM V251 County LEE State FL

Located in Sec. 21 Twp. 43 S. Rge. 25 E. U.S.G.S. Quad Map FORT MYERS 7.5min

To reach point from INT. OF US. 41 & RTE. 78 IN N. FT. MYERS . GO E. ON RTE. 78
5.7 MI. TO SCL. RR. & MARKER.

Type of Marker BRASS DISC SET ON I.P. INSIDE 4" DIA. PIPE Date Recovered NOV. - DEC. 19 80

HORIZONTAL CONTROL originated on _____ order control established by _____
in _____, on _____ North American 1927 _____ datum. _____ agency

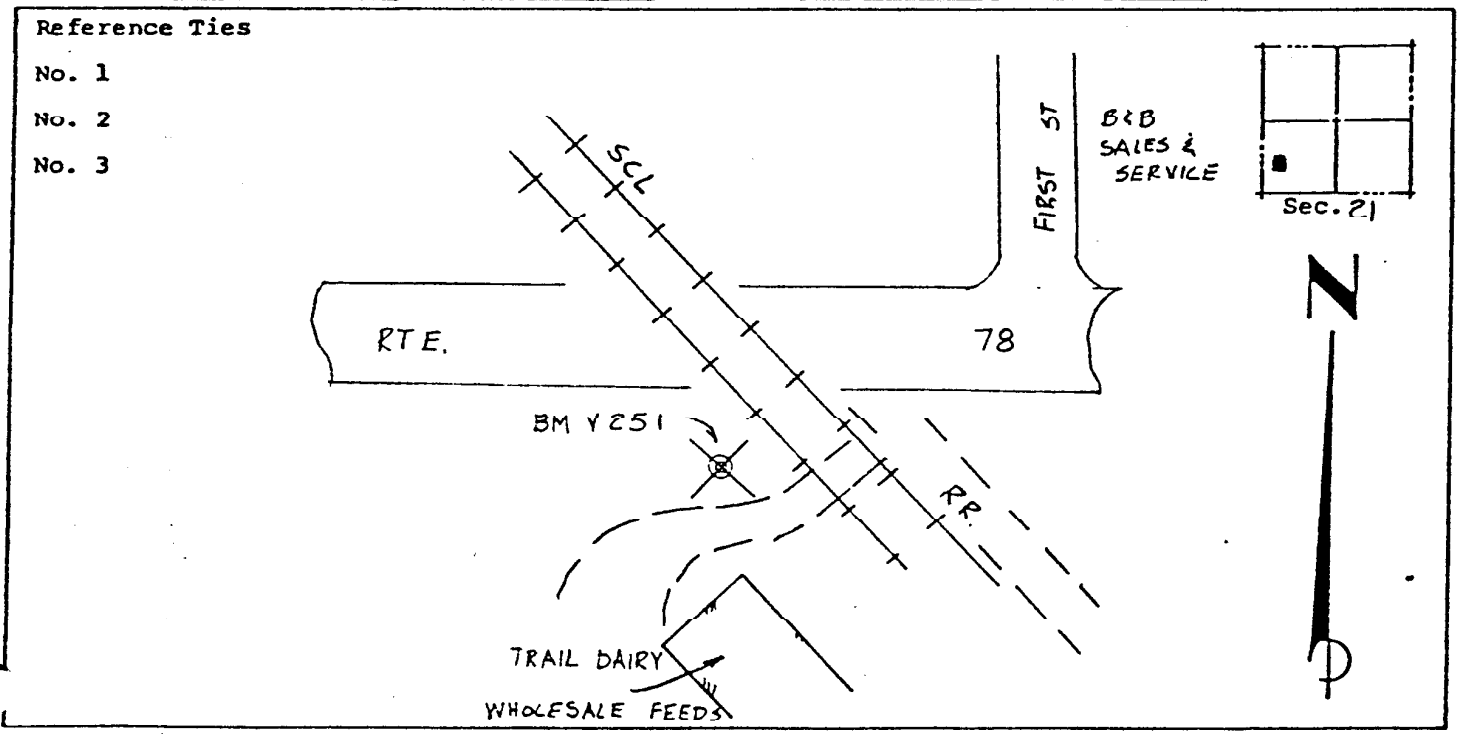
Coordinates: North (y) _____ East (x) _____
(feet)

3rd Order State and Zone Florida, Mercator West

Reference Bearings to Station or Object:

Description	Bearing	Distance

Field Book 1 Page _____ Sketch by B. R. HOMOLA



VERTICAL CONTROL originated on 1 st order control established by U.S.C. & G.S. agency

in 1966, on National Geodetic Survey Datum of 1929 datum.
year
Elevation 13.278, 3rd Order Level Book 2 Page 10