



Neri Associates

7025 N.W. 4th St. - Plantation, Florida 33317

LEE COUNTY, FLORIDA
U.S.D.A. SOIL CONSERVATION SERVI

MAPPING BY
HAMRICK AERIAL SURVEYS, INC.
CLEARWATER, FLORIDA

Marker Designation SL5-23 & TBM County LEE State FL
Located in Sec. 18 Twp. 43 S. Rge. 25 E. U.S.G.S. Quad Map FT. MYERS 7.5m.

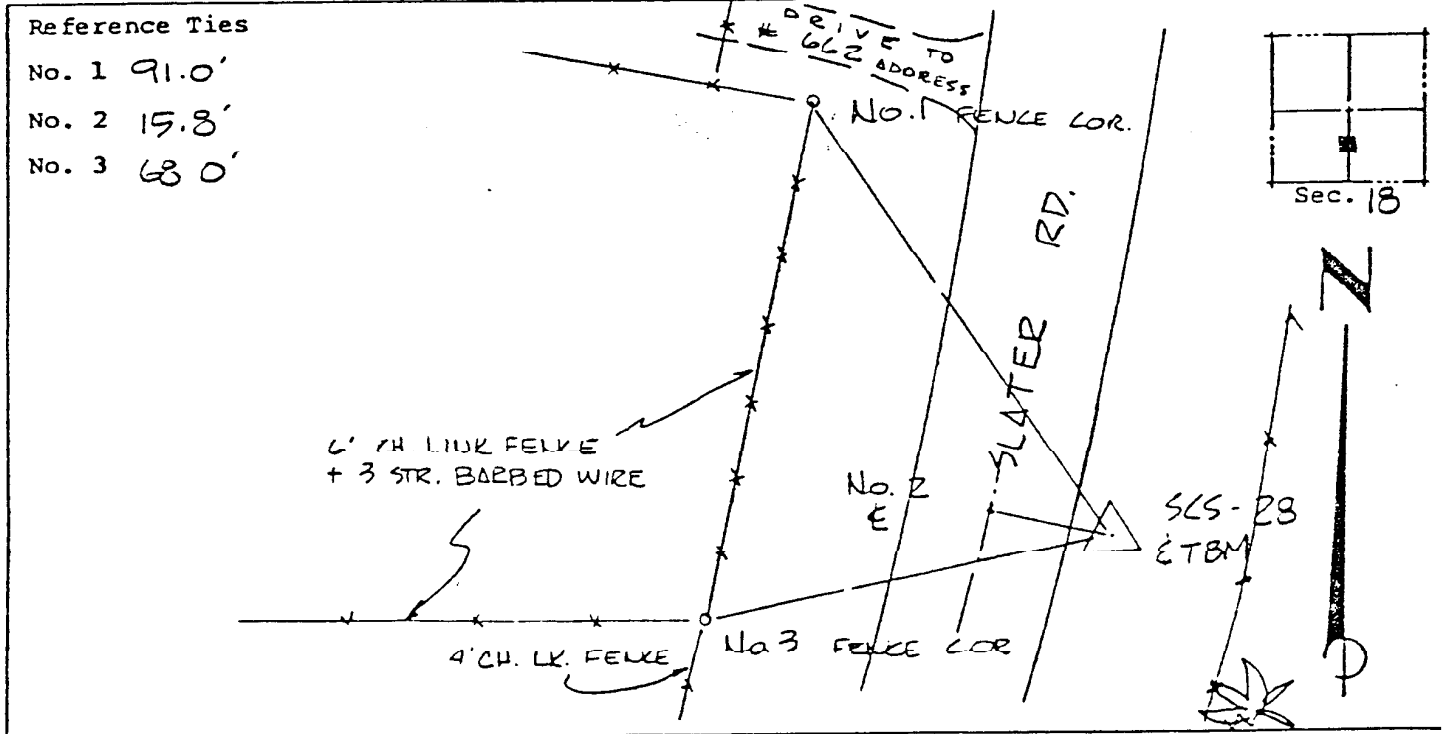
To reach point from INT. OF US 41 & SR 78 IN N. FT. MYERS. GO E. ON SK. 18
3.45 MI. TO SLATER RD. THENCE N. 2.2 MI. TO MARKER.

Type of Marker 2" LEE CO. DISC, 0.9' BLW. GRD Date set NOV. - DEC. 19 80
HORIZONTAL CONTROL originated on 2ND order control established by FLA. D.O.T. agency
in 1969, on North American 1927 datum.
Coordinates: North (y) 570771.154 East (x) 348579.239
(feet)
3rd Order State and Zone Florida, Mercator West

Reference Bearings to Station or Object:

Description	Bearing	Distance
<u>SL5-27</u>	<u>S 14° 45' 07.4" W</u>	<u>1928.50'</u>
<u>SL5-29</u>	<u>N 1° 32' 19.1" E</u>	<u>1487.89'</u>

Field Book 1 Page 34 Sketch by D.W. ALBERTSEN



VERTICAL CONTROL originated on 1ST order control established by U.S. C. & G.S. agency
in 1966, on National Geodetic Survey Datum of 1929 datum.
Elevation 18.81 3rd Order Level Book 2 Page 15