



7025 N.W. 4th St. - Plantation, Florida 33317

LEE COUNTY, FLORIDA
U.S.D.A. SOIL CONSERVATION SERVICE
MAPPING BY
HAMRICK AERIAL SURVEYS, INC.
CLEARWATER, FLORIDA

Marker Designation TBM SV-4 County LEE State FL
Located in Sec. 14 Twp. 43 S. Rge. 25 E. U.S.G.S. Quad Map FORT MYERS 7.5min

To reach point from INT. OF US 41 & RTE. 78 IN N. FT. MYERS. GO E. ON RTE. 78
8.5 MI. TO PALM CREEK DR. N. THEN GO N. 0.75 MI. TO MARKER.

Type of Marker 8" SPIKE IN E. FACE OF P. POLE Date set NOV. - DEC. 19 80

HORIZONTAL CONTROL originated on _____ order control established by _____ agency
in _____, on _____ North American 1927 _____ datum.

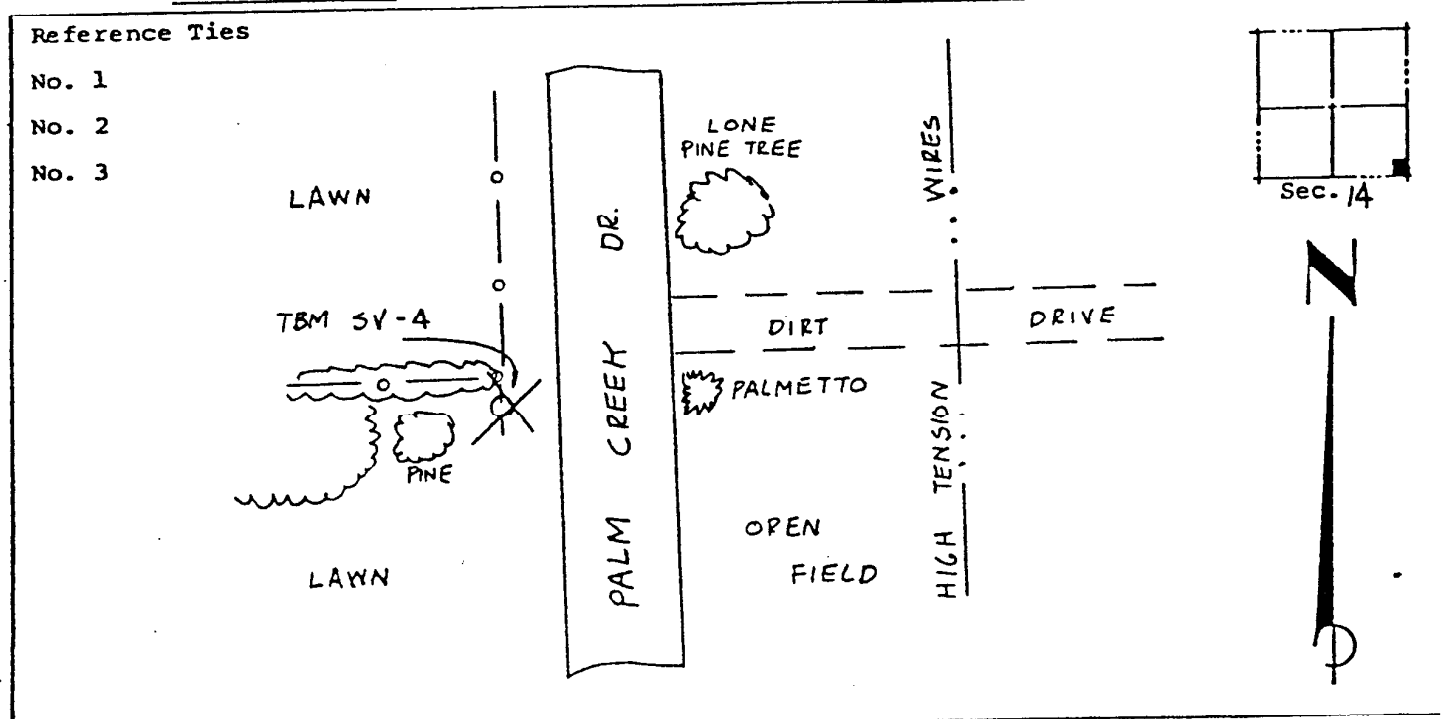
Coordinates: North (y) _____ East (x) _____
(feet)

Reference Bearings to Station or Object: _____
3rd Order State and Zone Florida, Mercator West

Reference Bearings to Station or Object:

Description	Bearing	Distance

Field Book 1 Page _____ Sketch by B. R. HOMOLA



VERTICAL CONTROL originated on 1st order control established by U.S.C. & G.S. agency

in 1966, on National Geodetic Survey Datum of 1929 datum.

Elevation 17.07, 3rd Order Level Book 3 Page 5