



7025 N.W. 4th St. • Plantation, Florida 33317

U.S.D.A SOIL CONSERVATION SERVICE

MAPPING BY

HARRICK AERIAL SURVEYS, INC.  
CLEARWATER, FLORIDA

Marker Designation TRM SV-24 County LEE State FL  
Located in Sec. 18 Twp. 43 S. Rge. 25 E. U.S.G.S. Quad Map FORT MYERS 7.5mi

To reach point from INT US 41 & SR 78 IN N FT. MYERS: GO E. ON SR 78  
3.45 MI E TO SLATER RD.; THENCE N. 2.95 MI E TO RICH RD; THENCE  
E 0.5 MI E TO MARKER.

Type of Marker 8" SPK IN N.W. FACE OF P. POLE Date set NOV. - DEC. 19 80

HORIZONTAL CONTROL originated on \_\_\_\_\_ order control established by \_\_\_\_\_ agency  
in \_\_\_\_\_, on \_\_\_\_\_ North American 1927 \_\_\_\_\_ datum.  
year

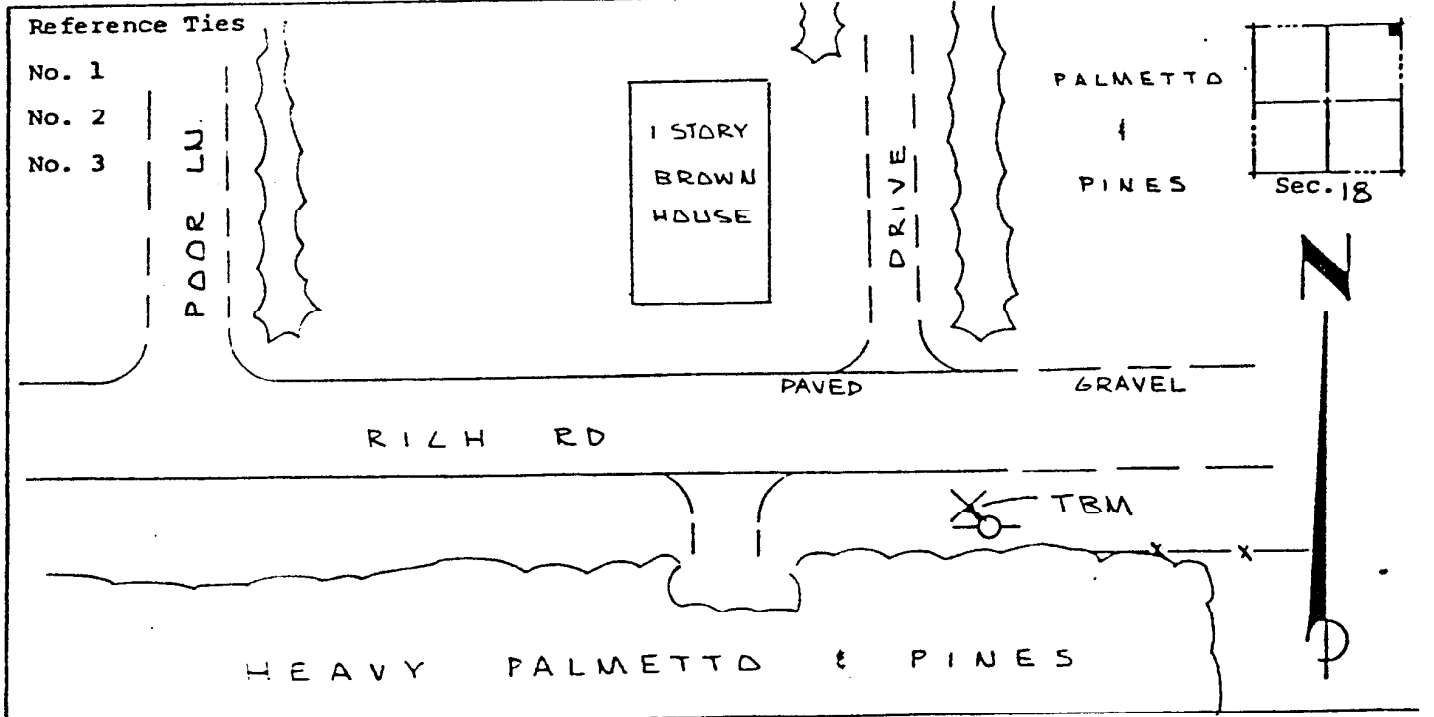
Coordinates: North (y) \_\_\_\_\_ East (x) \_\_\_\_\_  
(feet)

3rd Order State and Zone Florida, Mercator West

Reference Bearings to Station or Object:

Description	Bearing	Distance

Field Book 1 Page \_\_\_\_\_ Sketch by A. LETHERY



VERTICAL CONTROL originated on 1st order control established by U.S.C. & G.S. agency

in 1966, on National Geodetic Survey Datum of 1929 datum.  
year

Elevation 22.00, 3rd Order Level Book 2 Page 42