



7025 N.W. 4th St. - Plantation, Florida 33317

U.S.D.A. SOIL CONSERVATION SERVICE

MAPPING BY

HAMRICK AERIAL SURVEYS, INC.  
CLEARWATER, FLORIDA

Marker Designation TBM SV-20 County LEE State FL

Located in Sec. 17 Twp. 43 S. Rge. 25 E. U.S.G.S. Quad Map FORT MYERS 7.5mir

To reach point from INT OF US 41 & SR 78 IN N. FT. MYERS: GO E. ON RT 78  
7.0 MI ± TO WALLE RD, THENCE GO N. ON WALLE RD. 1.9 MI ± HENDERSON  
GRADE, THENCE W. 1.5 MI ± TO "T" INT, THENCE S. 0.15 MI ± TO  
RICH RD, THENCE W. 0.15 MI ± TO LYNN RD & MARKER

Type of Marker B<sup>s</sup>PK IN NE FACE OF 12" CORNER POST Date set NOV. - DEC. 19 80

HORIZONTAL CONTROL originated on \_\_\_\_\_ order control established by \_\_\_\_\_

in \_\_\_\_\_, on North American 1927 datum. \_\_\_\_\_ agency

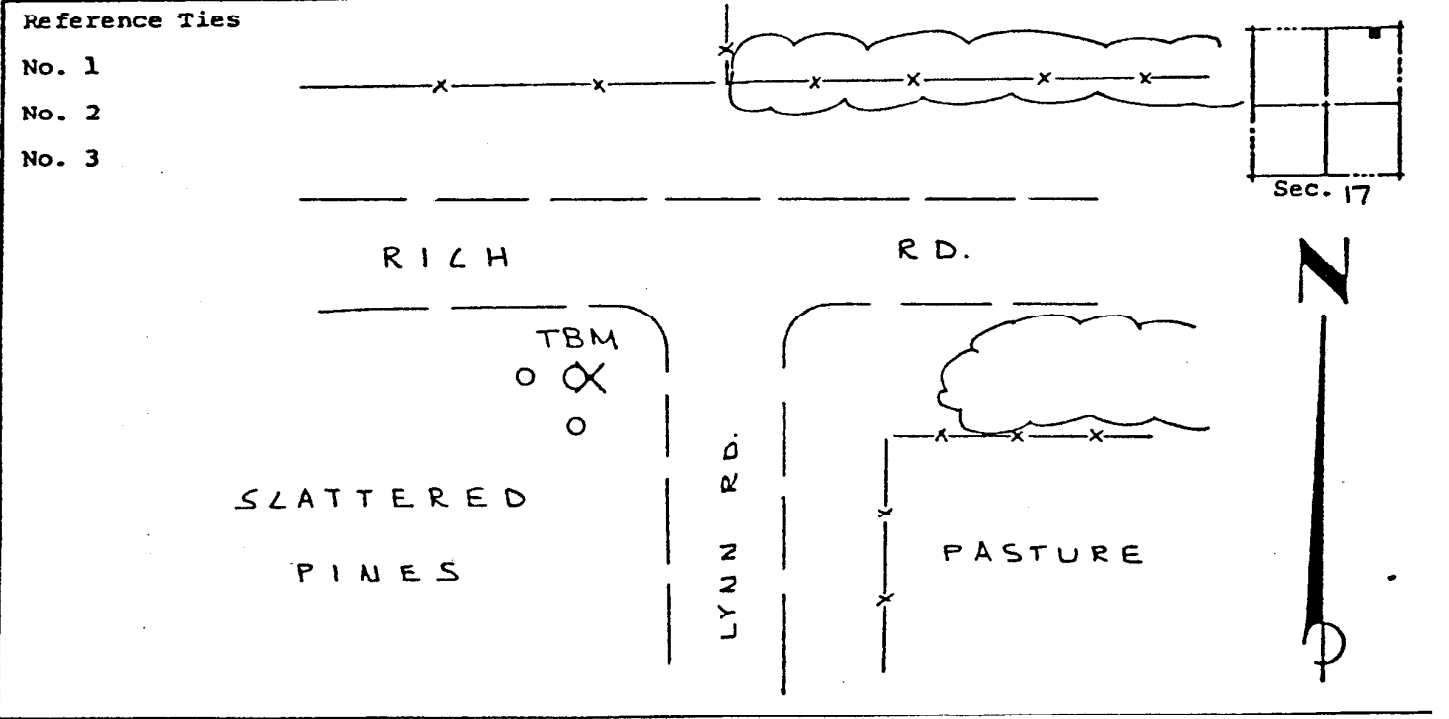
Coordinates: North (y) \_\_\_\_\_ East (x) \_\_\_\_\_  
(feet)

3rd Order State and Zone Florida, Mercator West

Reference Bearings to Station or Object:

Description	Bearing	Distance

Field Book 1 Page \_\_\_\_\_ Sketch by A LETHEBY



VERTICAL CONTROL originated on 1st order control established by U.S.C. & G.S. agency

in 1966, on National Geodetic Survey Datum of 1929 datum.

year \_\_\_\_\_  
Elevation 20.47, 3rd Order Level Book 2 Page 25