



Dani Associates

7025 N.W. 4th St. - Plantation, Florida 33317

LEE COUNTY, FLORIDA  
U.S.D.A. SOIL CONSERVATION SERVICE

MAPPING BY

HAMRICK AERIAL SURVEYS, INC.  
CLEARWATER, FLORIDA

Marker Designation SLS-9 & TBM County LEE State FL  
Located in Sec. 12 Twp. 43 S Rge. 25 E U.S.C.S. Quad Map TUCKERS CORNER 7.5mir

To reach point from INT. OF US 41 & SR. 78 IN N. FT. MYERS. GO E. ON SR. 78  
9.65 MI.± TO SR. 31. THENCE 1.7 MI.± TO SHOP & GO STORE. THENCE W.  
ON DIRT RD. 0.6 MI.± TO SHIRLEY LN. THENCE N. 0.4 MI.± TO SHARON DR.  
& MARKER.

Type of Marker 2" LEE CO. DISC, 0.4' BLW. GRD. Date set NOV. - DEC. 19 80

HORIZONTAL CONTROL originated on 2<sup>ND</sup> order control established by FLA. D.O.T. agency

in 1969 year, on North American 1927 datum.

Coordinates: North (y) 879,338.756 East (x) 574,661.420  
(feet)

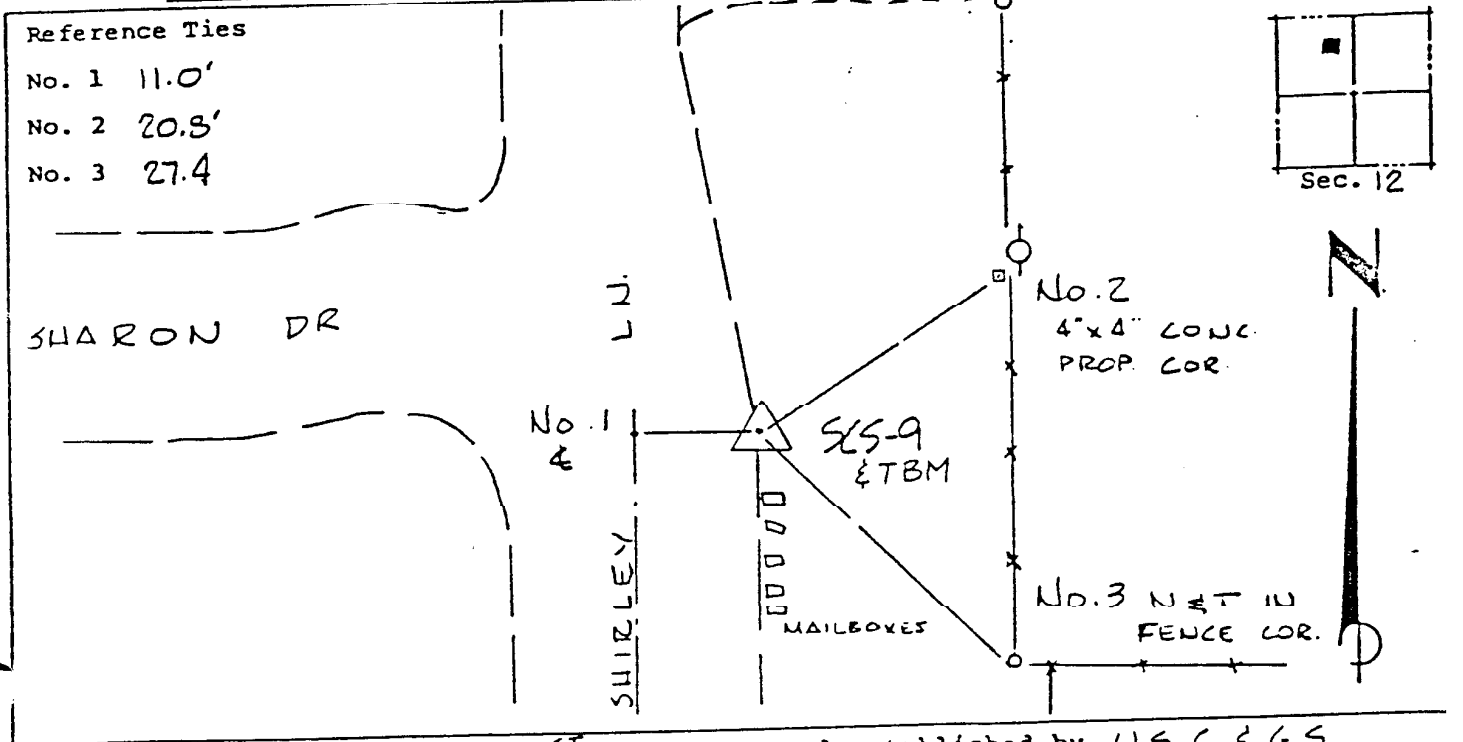
3rd Order

State and Zone Florida, Mercator West

Reference Bearings to Station or Object:

Description	Bearing	Distance
<u>SLS-8</u>	<u>N 89° 23' 34.6" W</u>	<u>4659.94'</u>
<u>SLS-10</u>	<u>N 0° 37' 33.2" W</u>	<u>1317.09'</u>

Field Book 1 Page 11 Sketch by D.W. ALBERTSEN



VERTICAL CONTROL originated on 1<sup>ST</sup> order control established by U.S.C. & G.S. agency

in 1966 year, on National Geodetic Survey Datum of 1929 datum.

Elevation 23.91, 3rd Order Level Book 2 Page 5