



Deni Associates

7025 N.W. 4th St. Plantation, Florida 33317

LEE COUNTY, FLORIDA
U.S.D.A. SOIL CONSERVATION SERVICE

MAPPING BY

HAMRICK AERIAL SURVEYS, INC.
CLEARWATER, FLORIDA

Marker Designation SCS-12 & TBM County LEE State FL
Located in Sec. 12 Twp. 43 S, Rge. 25 E U.S.G.S. Quad Map FT. MYERS 7.5min.

To reach point from INT. OF US. 41 & SR. 78 IN N. FT. MYERS. GO E. ON SR. 78
9.65 MI. ± TO SR. 31. THENCE N. 1.2 MI. ± TO CR. 78 & MARKER.

Type of Marker 2" LEE CO. DISC, FLUSH W. GROUND Date set NOV. - DEC. 19 80
HORIZONTAL CONTROL originated on 2ND order control established by FLA. O.O.T. agency
in 1969 year, on North American 1927 datum.
Coordinates: North (y) 874697.397 East (x) 577903.876
(feet)

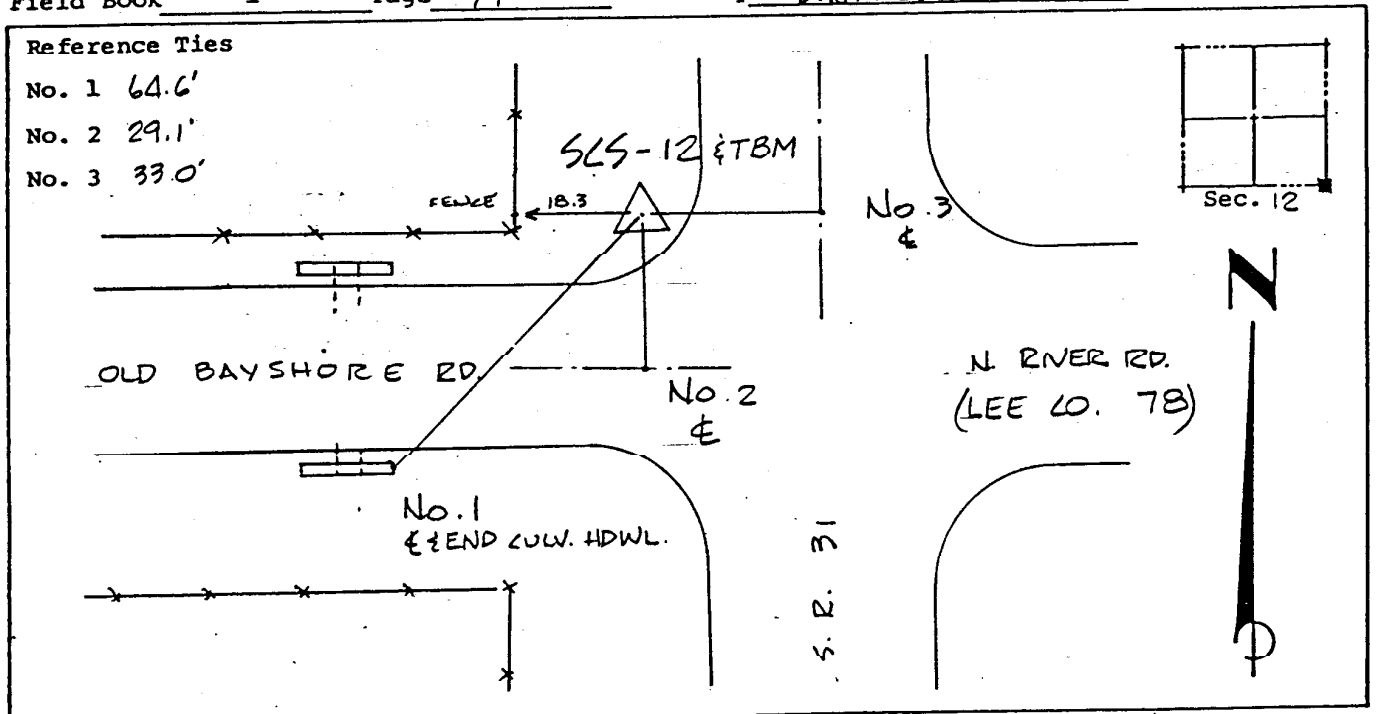
3rd Order

State and Zone Florida, Mercator West

Reference Bearings to Station or Object:

Description	Bearing	Distance
<u>SCS-11</u>	<u>N 0° 26' 57.3" E</u>	<u>6007.219</u>
<u>SCS-13</u>	<u>S 0° 28' 47.6" E</u>	<u>8209.487</u>
<u>CR-1 (1985)</u>	<u>S 88° 45' 34.0" E</u>	<u>4014.394</u>

Field Book 1 Page 14 Sketch by D.W. ALBERTSEN



VERTICAL CONTROL originated on 1ST order control established by U.S.C. & G.S. agency
in 1966 year, on National Geodetic Survey Datum of 1929 datum.
Elevation 15.85 (feet), 3rd Order Level Book 2 Page 6