



Dene Associates

7025 N.W. 4th St. • Plantation, Florida 33317

LEE COUNTY, FLORIDA  
U.S.D.A. SOIL CONSERVATION SERVICE

MAPPING BY  
HAMRICK AERIAL SURVEYS, INC.  
CLEARWATER, FLORIDA

Marker Designation SLS-8 & TBM County LEE State FL

Located in Sec. 11 Twp. 43 S. Rge. 25 E. U.S.G.S. Quad Map TULKERS CORNER 7.5m

To reach point from INT. OF US 41 & SR. 78 IN N. FT. MYERS. GO E. ON SR. 78  
9.65 MI ± TO SR. 31. THENCE N. 1.7 MI. ± TO SHOPE & GO STORE. THENCE W.  
ON DIRT RD 0.6 MI. ± TO SHIRLEY LN. THENCE N. 0.4 MI. ± TO SHARON DR.  
THENCE W. 0.85 MI. ± TO "T" INT. & MARKER.

Type of Marker 2" LEE CO. DISC, 0.5' BLW. GRD. Date set NOV. - DEC. 19 80

HORIZONTAL CONTROL originated on 2<sup>ND</sup> order control established by FLA. D.O.T. agency

in 1969, on North American 1927 datum.

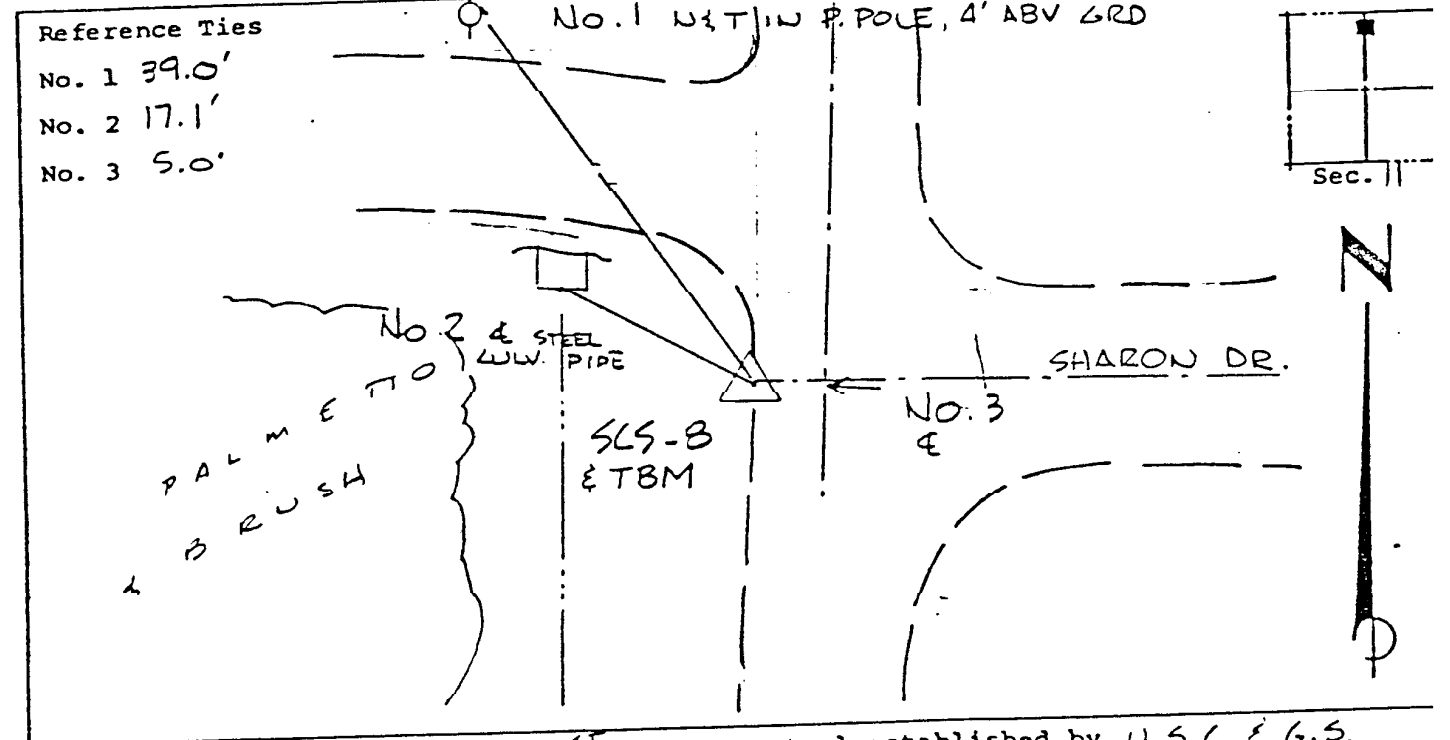
Coordinates: North (y) 879388.127 East (x) 570001.738  
(feet)

3rd Order State and Zone Florida, Mercator West

Reference Bearings to Station or Object:

Description	Bearing	Distance
<u>SLS-7</u>	<u>S 0° 28' 48.4" W</u>	<u>1961.79</u>
<u>SLS-9</u>	<u>S 89° 23' 34.6" E</u>	<u>4659.94</u>

Field Book 1 Page 10 Sketch by D.W. ALBERTSEN



VERTICAL CONTROL originated on 1<sup>ST</sup> order control established by U.S.C. & G.S. agency

in 1966, on National Geodetic Survey Datum of 1929 datum.

22.73 year 3rd Order Level Book 2 Page 4