



7025 N.W. 4th St. - Plantation, Florida 33317

U.S.D.A. SOIL CONSERVATION SERVICE

MAPPING BY

HAMRICK AERIAL SURVEYS, INC.  
CLEARWATER, FLORIDA

Marker Designation TBM SV-9 County LEE State FL

Located in Sec. 10 Twp. 43 S. Rge. 25 E. U.S.G.S. Quad Map FORT MYERS 7.5mi

To reach point from INT. OF US 41 & RTE. 78 IN N. FT. MYERS. GO E. ON RTE. 78  
7.6 MI. TO DURRANCE RD. N. THEN N. 1.85 MI. TO MARKER.

Type of Marker 8' SPIKE IN E. FACE OF P. POLE Date set NOV. - DEC. 19 80

HORIZONTAL CONTROL originated on \_\_\_\_\_ order control established by \_\_\_\_\_

in \_\_\_\_\_, on \_\_\_\_\_ North American 1927 datum. \_\_\_\_\_ agency

Coordinates: North (y) \_\_\_\_\_ East (x) \_\_\_\_\_  
(feet)

3rd Order State and Zone Florida, Mercator West

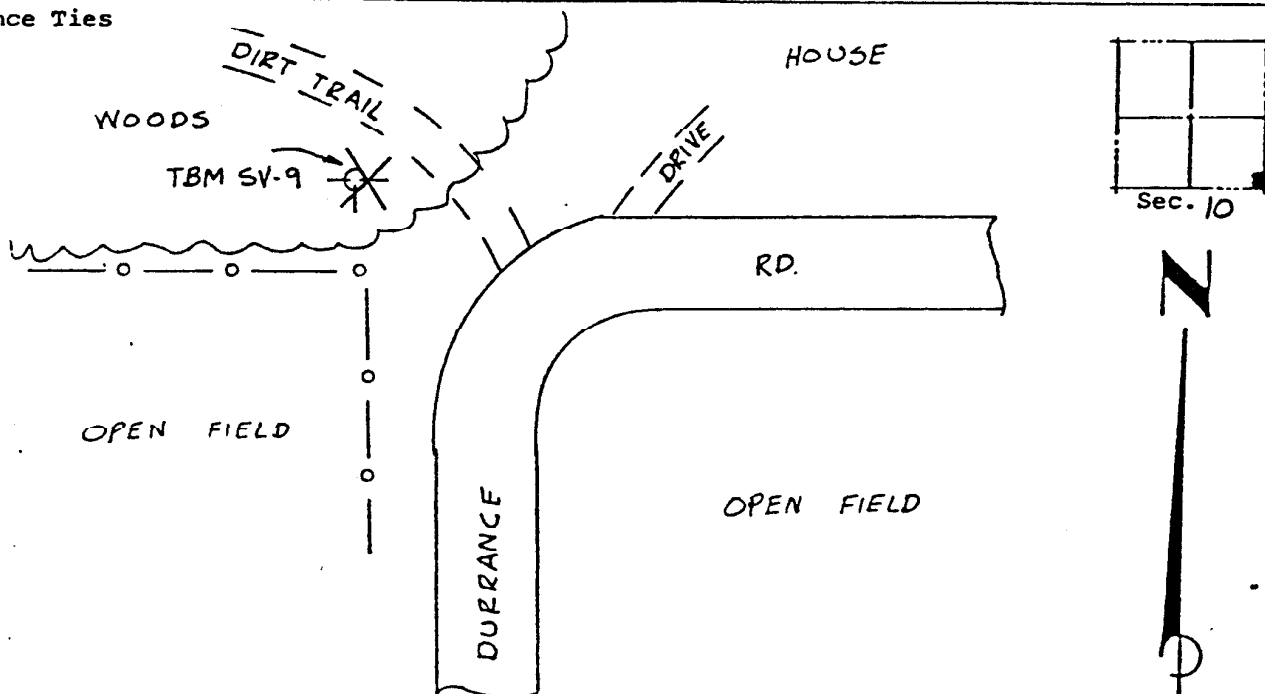
Reference Bearings to Station or Object:

Description	Bearing	Distance

Field Book 1 Page \_\_\_\_\_ Sketch by B.R. HOMOLA

Reference Ties

- No. 1
- No. 2
- No. 3



VERTICAL CONTROL originated on 1st order control established by U.S.C. & G.S.

in 1966, on National Geodetic Survey Datum of 1929 datum. \_\_\_\_\_ agency

Elevation 21.39, 3rd Order Level Book 3 Page 2