



7025 N.W. 4th St. - Plantation, Florida 33317

U.S.D.A. SOIL CONSERVATION SERVICE

MAPPING BY

HAMRICK AERIAL SURVEYS, INC.
CLEARWATER, FLORIDA

Marker Designation USCGS BM R251 County LEE State FL
Located in Sec. 7 Twp. 43 S. Rge. 25 E. U.S.G.S. Quad Map FORT MYERS 7.5min.

To reach point from INT. OF US 41 & RTE. 78 IN N. FT. MYERS. GO E. ON RTE. 78
3.4 MI. TO SLATER RD. THENCE N. ON SLATER 2.8 MI. TO BRIDGE OVER SCL RR. C
I-75, WALK NW. ON SCL RR. 1500' TO A BRIDGE & THE MARKER.

Type of Marker BRASS CAP SET IN CONG. ABUTMENT Date Recovered NOV. - DEC. 19 80

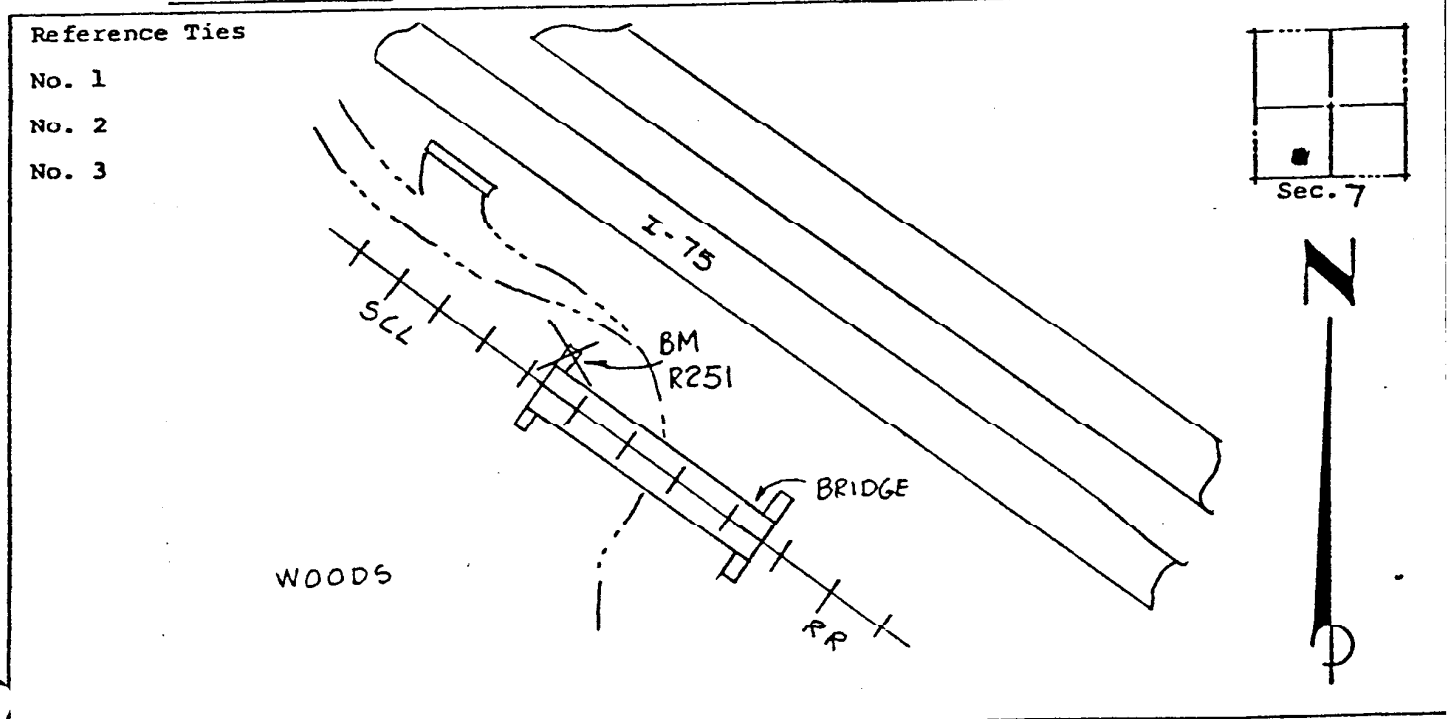
HORIZONTAL CONTROL originated on _____ order control established by _____ agency
in _____, on _____ North American 1927 _____ datum.

Coordinates: North (y) _____ East (x) _____
(feet)

Reference Bearings to Station or Object: _____
3rd Order State and Zone Florida, Mercator West

Description	Bearing	Distance

Field Book 1 Page _____ Sketch by B.R. HOMOLA



VERTICAL CONTROL originated on 1st order control established by U.S.C. & G.S. agency

in 1966, on National Geodetic Survey Datum of 1929 datum.
Elevation 22.375, 3rd Order Level Book 2 Page 1
(feet)