

275-8875



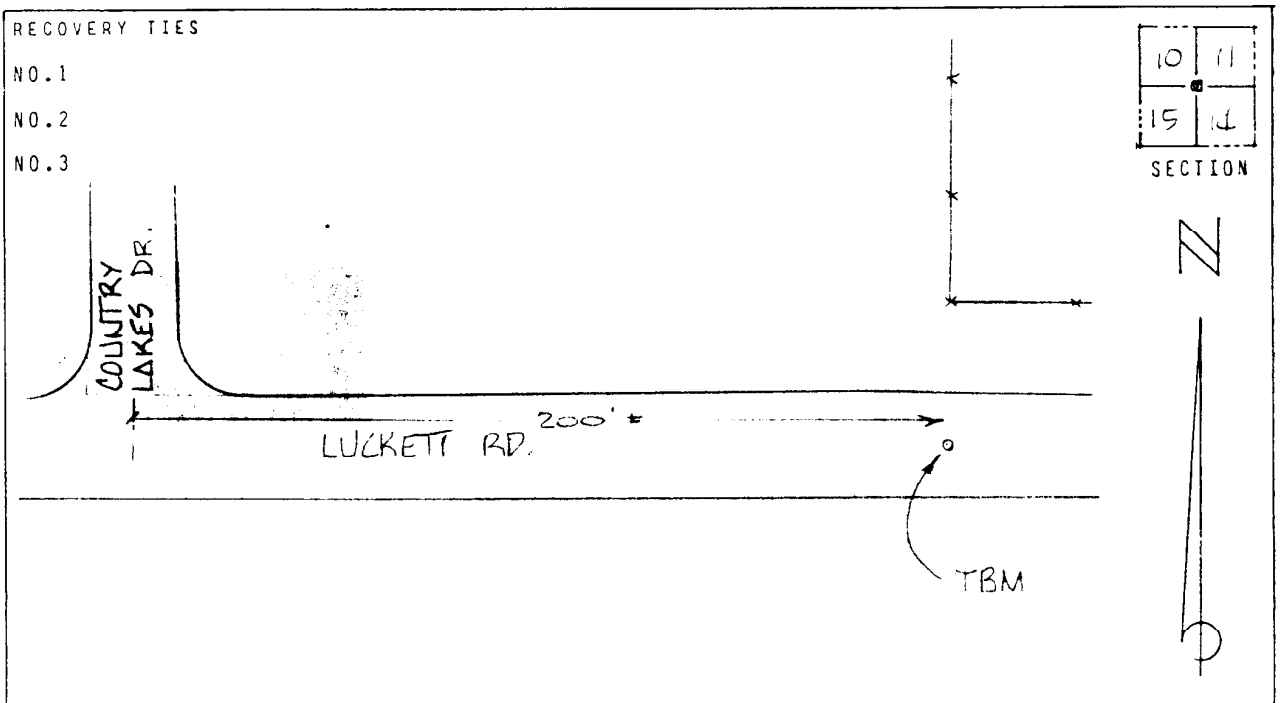
LEE COUNTY, FLORIDA  
AERIAL MAPPING PROJECT

MAPPING BY:  
WOOLPERT CONSULTANTS

DESIGNATION TBM 16-71 COUNTY LEE STATE FL  
LOCATED IN SEC 10/11 TWP 44S RGE 25E USGS QUAD MAP FORT MYERS  
TO REACH SURVEY MARK FROM LUCKETT RD. @ I75; THENCE E.  
0.5 MI, 200' E, ± OF COUNTRY LAKES DR.,  
TO MARK,

TYPE OF EXISTING 2" ALUM. DISC, FLUSH W/ PVMT. "STARNES & ASSOC."  
MARK SEC. COR. 10/11 DATE SET JULY 1988  
HORIZONTAL CONTROL ORIGINATED ON 2ND ORDER CONTROL BY N.G.S. AND F.D.O.T.  
ON NORTH AMERICAN DATUM OF 1927 (1927 ADJ) ON NORTH AMERICAN DATUM OF 1983  
COORDINATES (FT) COORDINATES (FT)  
NORTHING (Y) \_\_\_\_\_ NORTHING (Y) \_\_\_\_\_  
EASTING (X) \_\_\_\_\_ EASTING (X) \_\_\_\_\_  
3RD ORDER COORDINATES STATE AND ZONE FLORIDA, MERCATOR WEST

FIELD BOOK \_\_\_\_\_ PAGE \_\_\_\_\_ SKETCH BY DSW



VERTICAL CONTROL ORIGINATED ON 2ND ORDER CONTROL ESTABLISHED BY N.C.S. AND F.D.O.T.  
ON NATIONAL GEODETIC VERTICAL DATUM OF 1929  
ELEVATION (FT) 22.70 , 3RD ORDER LEVEL BOOK V16 PAGE 71