



Deni Associates

7025 N.W. 4th St. - Plantation, Florida 33317

LEE COUNTY, FLORIDA
U.S.D.A. SOIL CONSERVATION SERVICE

MAPPING BY

HAMRICK AERIAL SURVEYS, INC.
CLEARWATER, FLORIDA

Marker Designation SLS-2 & TBM County LEE State FL

Located in Sec. 6 Twp. A3 S. Rge. 25 E. U.S.G.S. Quad Map TUCKERS CORNER 7.5min.

To reach point from INT. OF US 41 & SR. 78 IN N. FT. MYERS, GO E. ON SR. 78
3.45 MI.± TO SLATER RD. THENCE N. 4.0 MI.± TO NALLE GRADE RD. & MARKER.

Type of Marker 2" LEE CO. DISK, 0.1' BELOW SHOULDER Date set NOV. - DEC. 19 80

HORIZONTAL CONTROL originated on 2ND order control established by FLA. D.O.T. agency

in 1969 year, on North American 1927 datum.

Coordinates: North (y) 880109.491 East (x) 548799.756
(feet)

3rd Order

State and Zone Florida, Mercator West

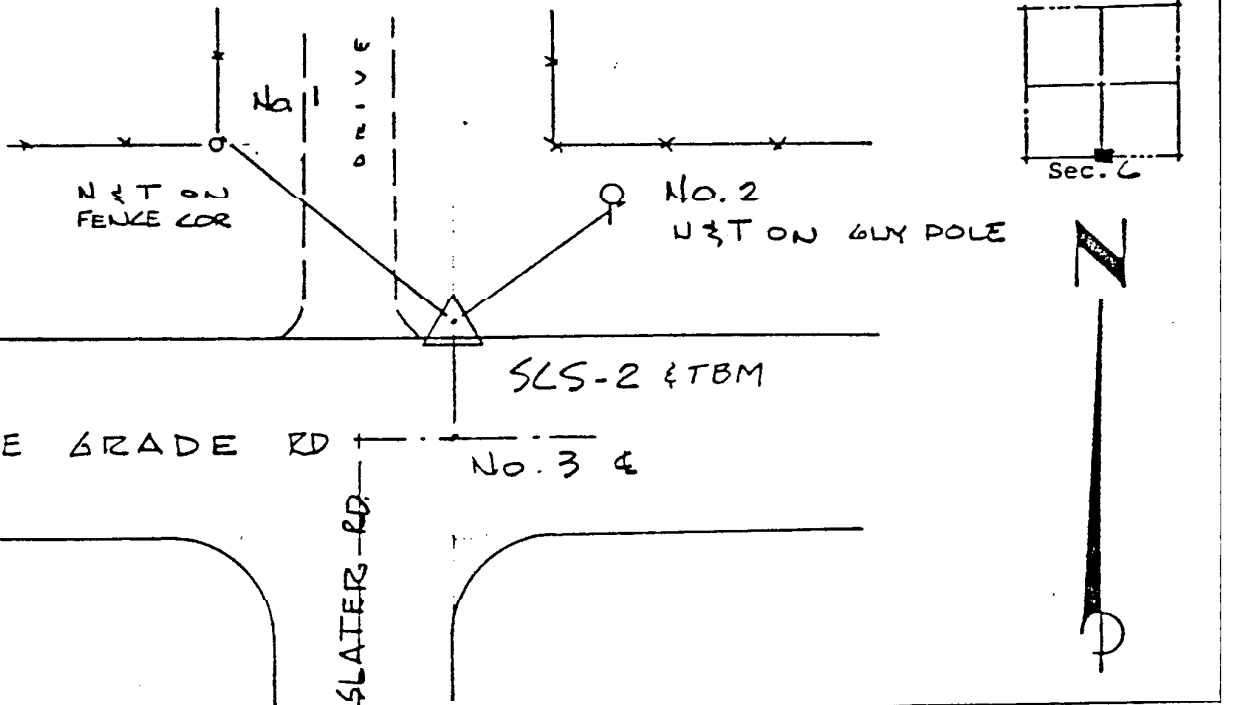
Reference Bearings to Station or Object:

Description	Bearing	Distance
<u>SLS-1</u>	<u>S 0° 08' 55.4" W</u>	<u>3866.108</u>
<u>SLS-3</u>	<u>N 89° 15' 39.7" E</u>	<u>3994.529</u>

Field Book 1 Page 3 Sketch by D. W. ALBERTSEN

Reference Ties

- No. 1 32.0'
- No. 2 16.8'
- No. 3 11.6'



VERTICAL CONTROL originated on 1ST order control established by U.S.C. & G.S. agency

in 1966 year, on National Geodetic Survey Datum of 1929 datum.

Elevation 24.70 3rd Order Level Book 2 Page 2