



Dene Associates

7025 N.W. 4th St. • Plantation, Florida 33317

LEE COUNTY, FLORIDA  
U.S.D.A. SOIL CONSERVATION SERVICE

MAPPING BY  
HAMRICK AERIAL SURVEYS, INC.  
CLEARWATER, FLORIDA

Marker Designation SCS-5 & TBM County LEE State FL

located in Sec. 10 Twp. 43 S. Rge. 25 E U.S.G.S. Quad Map TUCKERS CORNER 7.5min.

to reach point from INT. OF US 41 & SR. 78 IN N. FT. MYERS. GO E. ON SR. 78  
4.5 MI. TO SLATER RD. THENCE N. 4.0 MI. TO NALLE GRADE RD. THENCE  
E. 2.5 MI. TO A CONC. CULVERT UNDER ROAD & MARKER.

Type of Marker 2" LEE CO. DISC. FLUSH W GROUND Date set NOV. - DEC. 19 80

HORIZONTAL CONTROL originated on 2<sup>ND</sup> order control established by FLA. D.O.T. agency

in year, on North American 1927 datum.

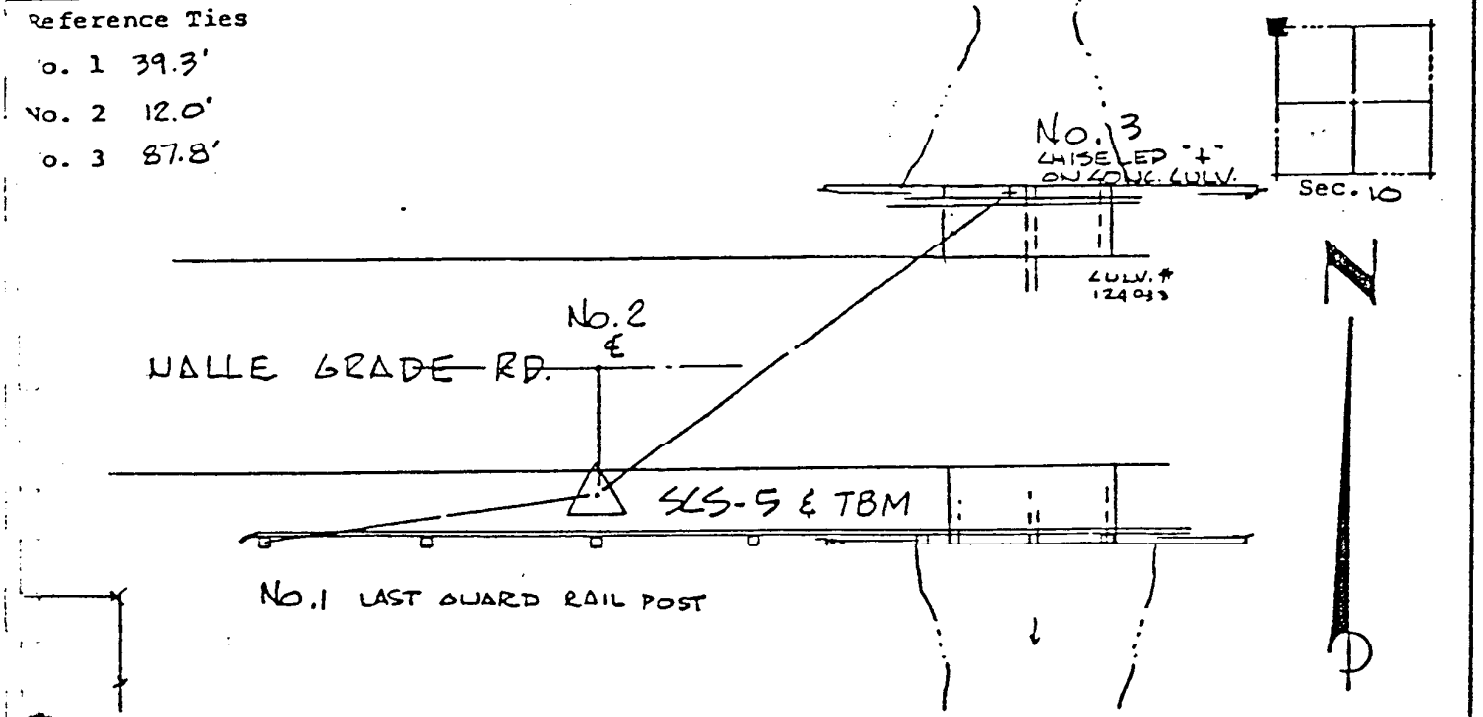
Coordinates: North (y) 880129.954 East (x) 562019.287  
(feet)

3rd Order State and Zone Florida, Mercator West

Reference Bearings to Station or Object:

Description	Bearing	Distance
<u>SCS-4</u>	<u>S 89° 58' 14.3" W</u>	<u>5335.843</u>
<u>SCS-6</u>	<u>S 89° 41' 29.7" E</u>	<u>5411.014</u>

Field Book 1 Page 7 Sketch by D.W. ALBERTSEN



HORIZONTAL CONTROL originated on 1<sup>ST</sup> order control established by U.S.C. & G.S. agency

in 1966, on National Geodetic Survey Datum of 1929 datum.

year 24.79 3rd Order Level Book 7 Page 3