



Deni Associates

7025 N.W. 4th St. • Plantation, Florida 33317

LEE COUNTY, FLORIDA AERIAL MAPPING PROJECT

MAPPING BY
HAMRICK AERIAL SURVEYS, INC.
CLEARWATER, FLORIDA

Marker Designation TBM FMBV-13 County LEE State FL
Located in Sec. 3 Twp. 48 S. Rge. 25 E. U.S.G.S. Quad Map BONITA SPRINGS 7.5min.

To reach point from INT. OF US. BUS. 41 E SR. 865 IN BONITA SPRINGS, GO W.
ON SR. 865 1.2 MI. TO SPANISH WELLS DR. GO S. INTO SUB. AND PROCEED
TO S.W. CORNER OF SUB. (SEC. 3) AND MARKER.

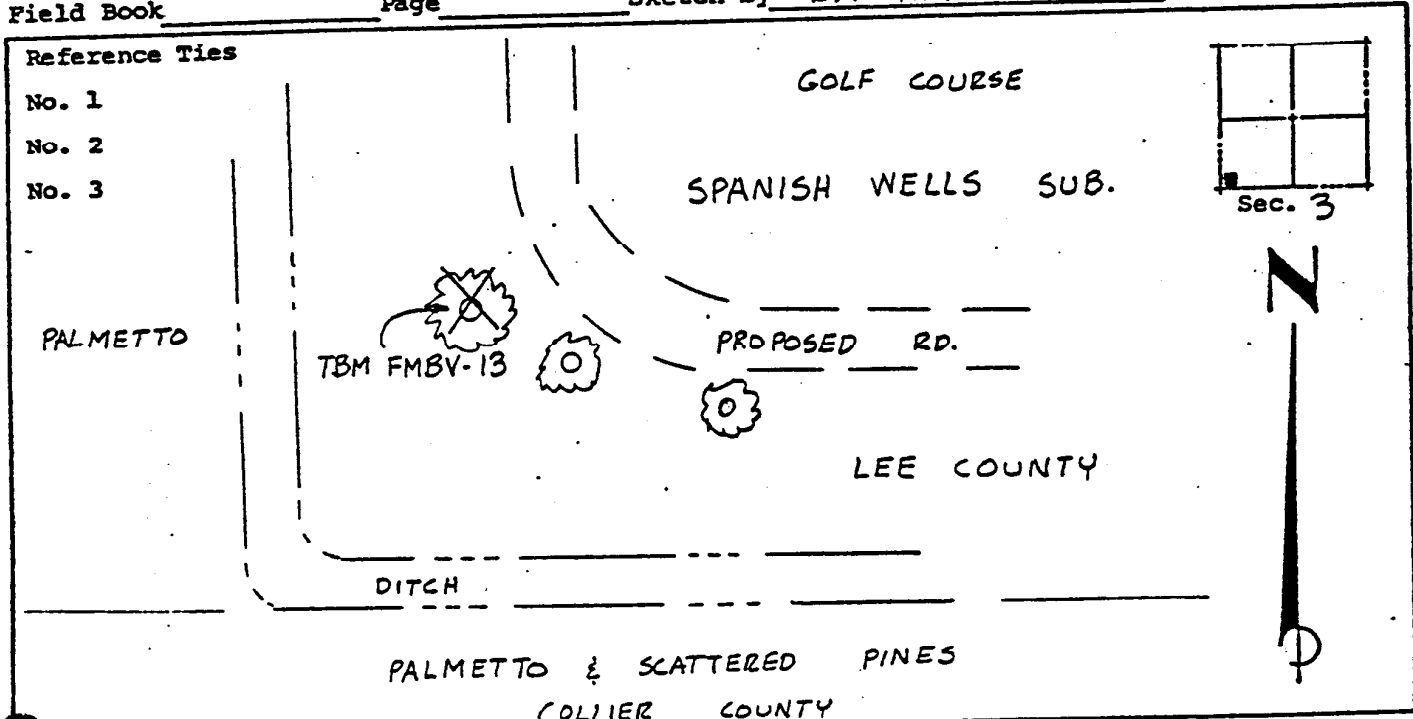
Type of Marker 8" SPIKE IN N. FACE OF 12' PINE TREE Date set JAN. 19 81
HORIZONTAL CONTROL originated on _____ order control established by _____
in _____, on _____ North American 1927 _____ datum. _____ agency

Coordinates: North (y) _____ East (x) _____
(feet) _____
3rd Order State and Zone Florida, Mercator West

Reference Bearings to Station or Object:

Description	Bearing	Distance

Field Book _____ Page _____ Sketch by B. R. HOMOLA



VERTICAL CONTROL originated on 1ST order control established by USC & GS agency
in 1966, on National Geodetic Survey Datum of 1929 datum.

Elevation 14.43, 3rd Order Level Book V3 Page 24
(feet)