



Deni Associates

7025 N.W. 4th St. • Plantation, Florida 33317

LEE COUNTY, FLORIDA
AERIAL MAPPING PROJECT

MAPPING BY
HAMRICK AERIAL SURVEYS, INC.
CLEARWATER, FLORIDA

Marker Designation TBM FMBV-14 County LEE-COLLIER State FL
Located in Sec. 21/11/12 Twp. 48S. Rge. 25E U.S.G.S. Quad Map BONITA SPRINGS 7.5min.

To reach point from _____
MARKER IS @ SEC. CORNER $\frac{21}{1112}$ AND @
LEE-COLLIER COUNTY LINE.

Type of Marker TOP OF SCREW HOLDING BRASS CAP TO CONC. POST Date set JAN. 19 81

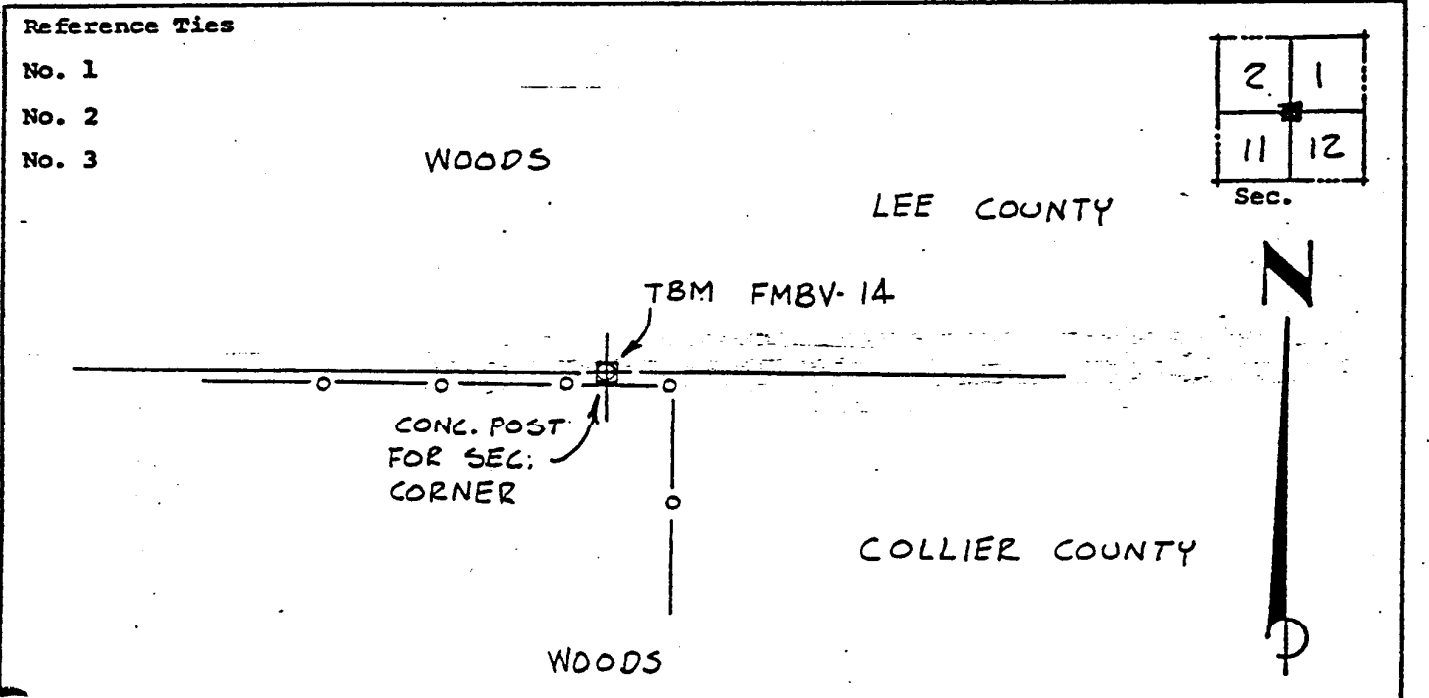
HORIZONTAL CONTROL originated on _____ order control established by _____
in _____, on _____ North American 1927 _____ datum. _____ agency

Coordinates: North (y) _____ East (x) _____
(feet) _____
3rd Order State and Zone Florida, Mercator West

Reference Bearings to Station or Object:

Description	Bearing	Distance

Field Book _____ Page _____ Sketch by B. R. HOMOLA



VERTICAL CONTROL originated on 1ST order control established by USC & GS
in 1966, on National Geodetic Survey Datum of 1929 datum. _____ agency

Elevation 15.29, 3rd Order Level Book V2 Page 43
(feet)