



Deni Associates

7025 N.W. 4th St. - Plantation, Florida 33317

LEE COUNTY, FLORIDA
AERIAL MAPPING PROJECT

MAPPING BY
HAMRICK AERIAL SURVEYS, INC.
CLEARWATER, FLORIDA

Marker Designation TBM FMBV-16 County LEE State FL
Located in Sec. 34 Twp. 47S Rge. 25E U.S.G.S. Quad Map BONITA SPRINGS 7.5min.

To reach point from INT. OF US. BUS. 41 & SR. 865 IN BONITA SPRINGS.
GO W. ON SR. 865 1.5 MI. ± TO ARROYAL RD. & MARKER.

Type of Marker CHISELED 4" ON BOLT OF FIRE HYD. Date set JAN. 19 81

HORIZONTAL CONTROL originated on _____ order control established by _____ agency

in _____, on North American 1927 datum.

Coordinates: North (y) _____ East (x) _____
(feet)

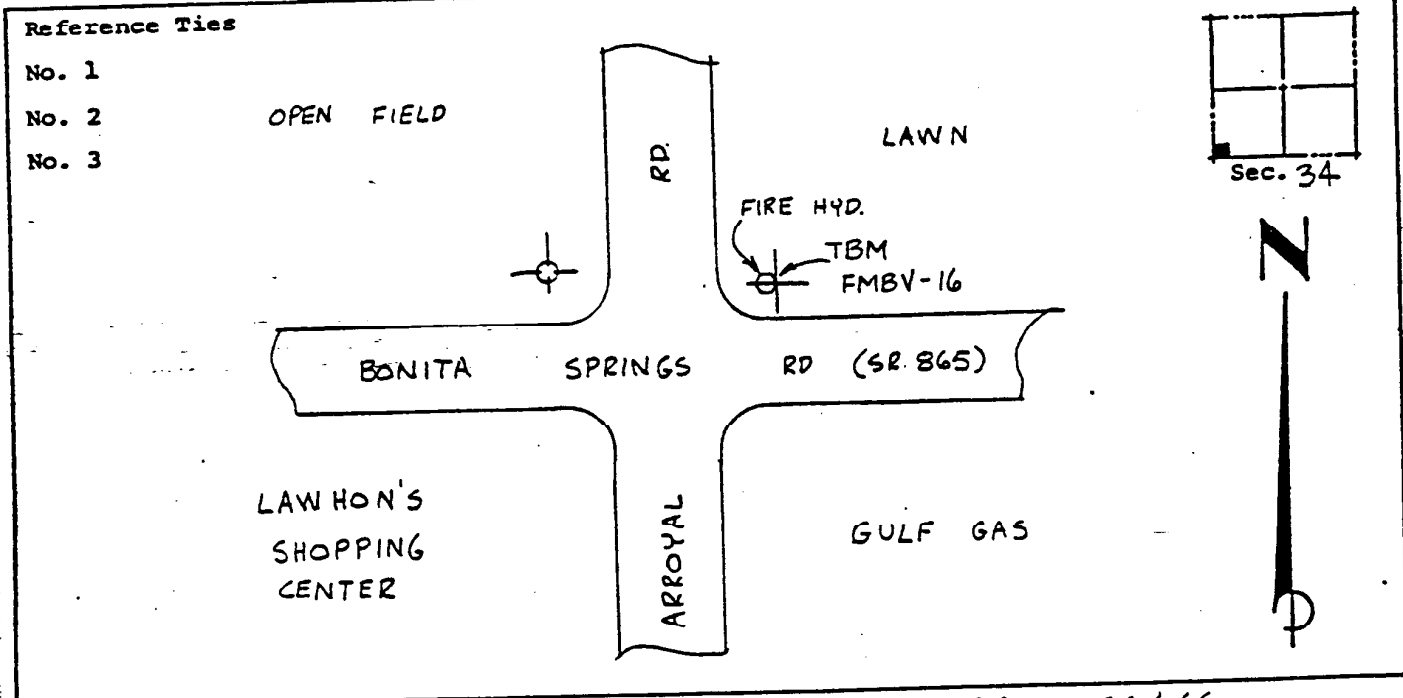
3rd Order

State and Zone Florida, Mercator West

Reference Bearings to Station or Object:

Description	Bearing	Distance

Field Book _____ Page _____ Sketch by B.R. HOMOLA



VERTICAL CONTROL originated on 1ST order control established by USC & GS agency

in 1966, on National Geodetic Survey Datum of 1929 datum.

year 1966
Elevation 11.78, 3rd Order Level Book V3 Page 16
(feet)