



**Dene Associates**

7025 N.W. 4th St. - Plantation, Florida 33317

LEE COUNTY, FLORIDA  
U.S.D.A. SOIL CONSERVATION SERVICE

MAPPING BY

HAMRICK AERIAL SURVEYS, INC.  
CLEARWATER, FLORIDA

Marker Designation SLS - 11 & TBM County LEE State FL

Located in Sec. 1 Twp. 43 S. Rge. 25 E. N.S.G.S. Quad Map TUCKERS CORNER 7.5min

To reach point from INT. OF US 41 & SR. 78 IN N. FT. MYERS. GO E. ON SR. 78  
9.65 MI. TO SR. 31. THENCE N. 2.35 MI. TO FOX HILL RD. & MARKER.

Type of Marker 2" LEE CO. DISC, 0.1' BLW. GRD. Date set NOV. - DEC. 19 80

HORIZONTAL CONTROL originated on 2<sup>ND</sup> order control established by FLA. D.O.T. agency

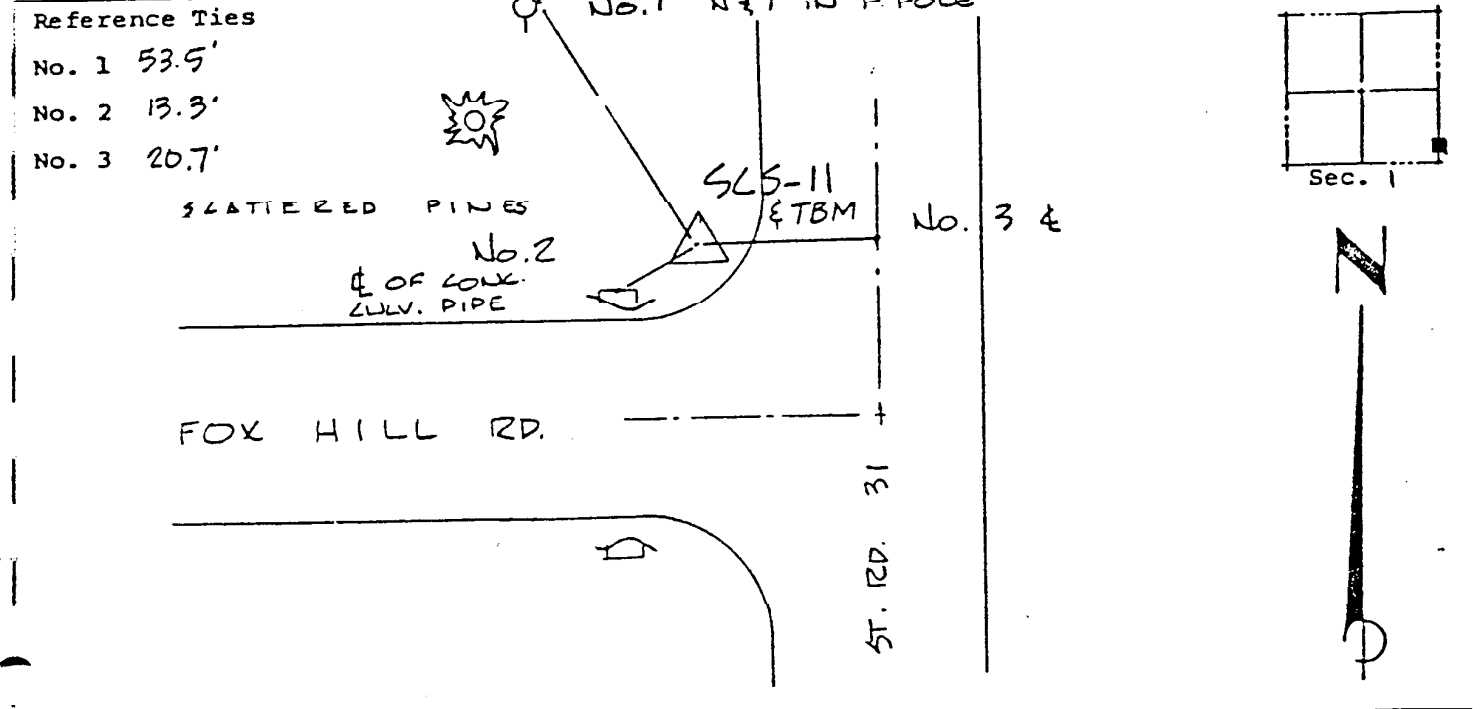
in 1969 year, on North American 1927 datum.

Coordinates: North (y) 880704.433 East (x) 577930.976  
(feet) 3rd Order State and Zone Florida, Mercator West

Reference Bearings to Station or Object:

Description	Bearing	Distance
<u>SLS - 10</u>	<u>S 89° 09' 22.2" W</u>	<u>3304.302</u>
<u>SLS - 12</u>	<u>S 0° 26' 57.3" W</u>	<u>6007.219</u>

Field Book 1 Page 13 Sketch by D.W. ALBERTSEN



VERTICAL CONTROL originated on 1<sup>ST</sup> order control established by U.S.C. & G.S. agency

in 1966 year, on National Geodetic Survey Datum of 1929 datum.

Elevation 24.89 , 3rd Order Level Book 2 Page 6