



Deni Associates

7025 N.W. 4th St. • Plantation, Florida 33317

LEE COUNTY, FLORIDA AERIAL MAPPING PROJECT

MAPPING BY
HAMRICK AERIAL SURVEYS, INC.
CLEARWATER, FLORIDA

Marker Designation USC & GS WIGGINS & BM County LEE State FL

Located in Sec. 31 Twp. 47S Rge. 25E U.S.G.S. Quad Map BONITA SPRINGS 7.5min.

To reach point from INT. US 41 & RT. 865 : GO W. ON RT. 865
4.15 MI. TO POINT.

Type of Marker STD. BRASS CAP IN CONC. 0.5' ABV. GRD. Date set NOVEMBER 19 80

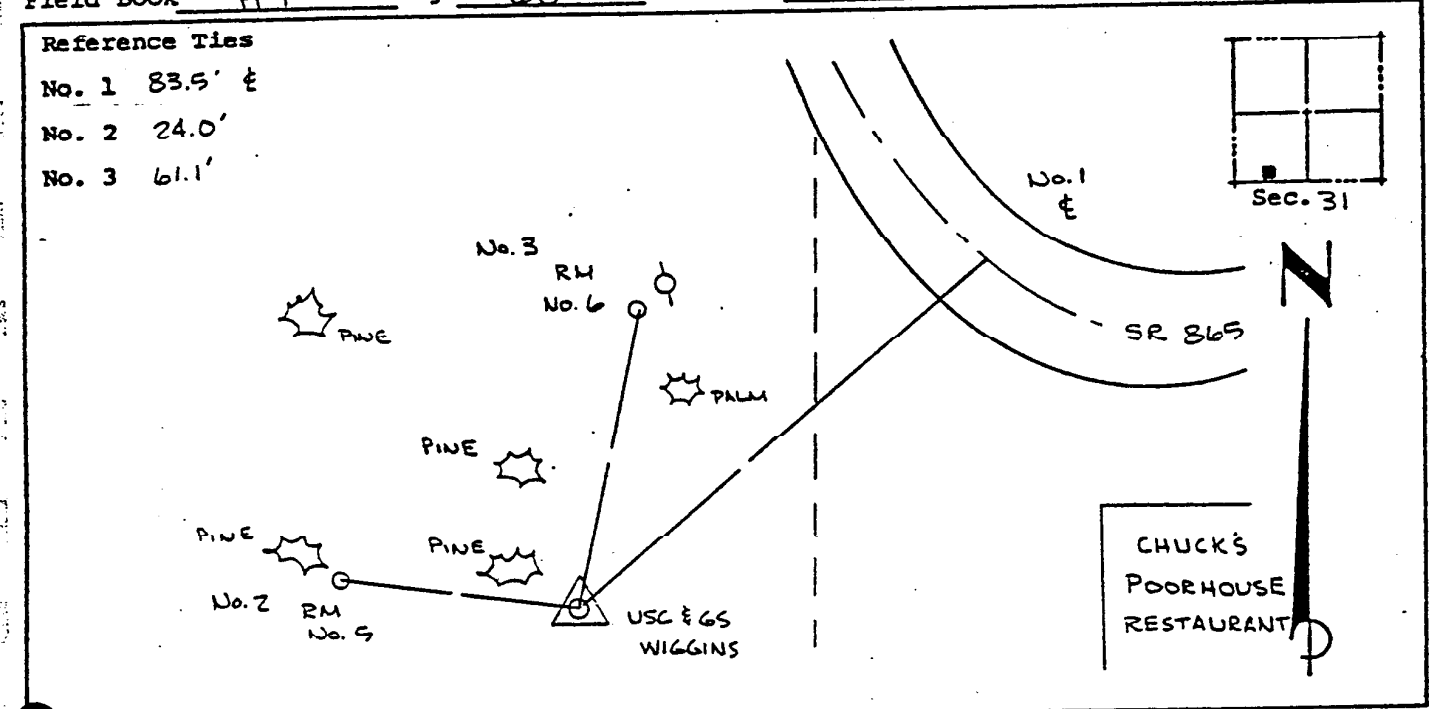
HORIZONTAL CONTROL originated on 1st order control established by USC & GS agency
in 1934, on North American 1927 datum.

Coordinates: North (y) 725805.270 East (x) 950589.779
(feet) 3rd Order State and Zone Florida, Mercator West

Reference Bearings to Station or Object:

Description	Bearing	Distance
<u>FLA. D.O.T 12 69 A-38</u>	<u>N 15° 29' 08.4" E</u>	<u>41935.358</u>
<u>FMB-27</u>	<u>S 71° 53' 34.0" E</u>	<u>584.575</u>

Field Book H 1 Page 60 Sketch by A. LETHERY



VERTICAL CONTROL originated on 1st order control established by USC & GS agency
in 1966, on National Geodetic Survey Datum of 1929 datum.

year RECORD 7.480 FOUND TO BE IN ERROR
Elevation (7.15 DENI), 3rd Order Level Book VI Page 41
(feet)