



Deni Associates

7025 N.W. 4th St. • Plantation, Florida 33317

LEE COUNTY, FLORIDA AERIAL MAPPING PROJECT

MAPPING BY
HAMRICK AERIAL SURVEYS, INC.
CLEARWATER, FLORIDA

Marker Designation TBM FMBV-17 County LEE State FL
Located in Sec. 29/32 Twp. 47S Rge. 25E U.S.G.S. Quad Map BONITA SPRINGS 7.5min.

To reach point from INT. OF US. BUS. 41 & SR. 865 IN BONITA SPRINGS. GO W.
ON SR. 865 1.7 MI. ± TO US. 41. THENCE N. 1.1 MI. ± TO TERRY RD. E. & DIRT
TRAIL W. THENCE W. 1.3 MI. ± TO A TRAIL S. & MARKER.

Type of Marker TOP CONC. MON. FLUSH WITH GROUND. Date set JAN: 19 81

HORIZONTAL CONTROL originated on _____ order control established by _____ agency

in _____, on North American 1927 datum.

Coordinates: North (y) _____ East (x) _____
(feet)

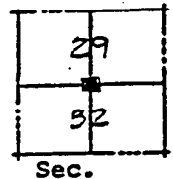
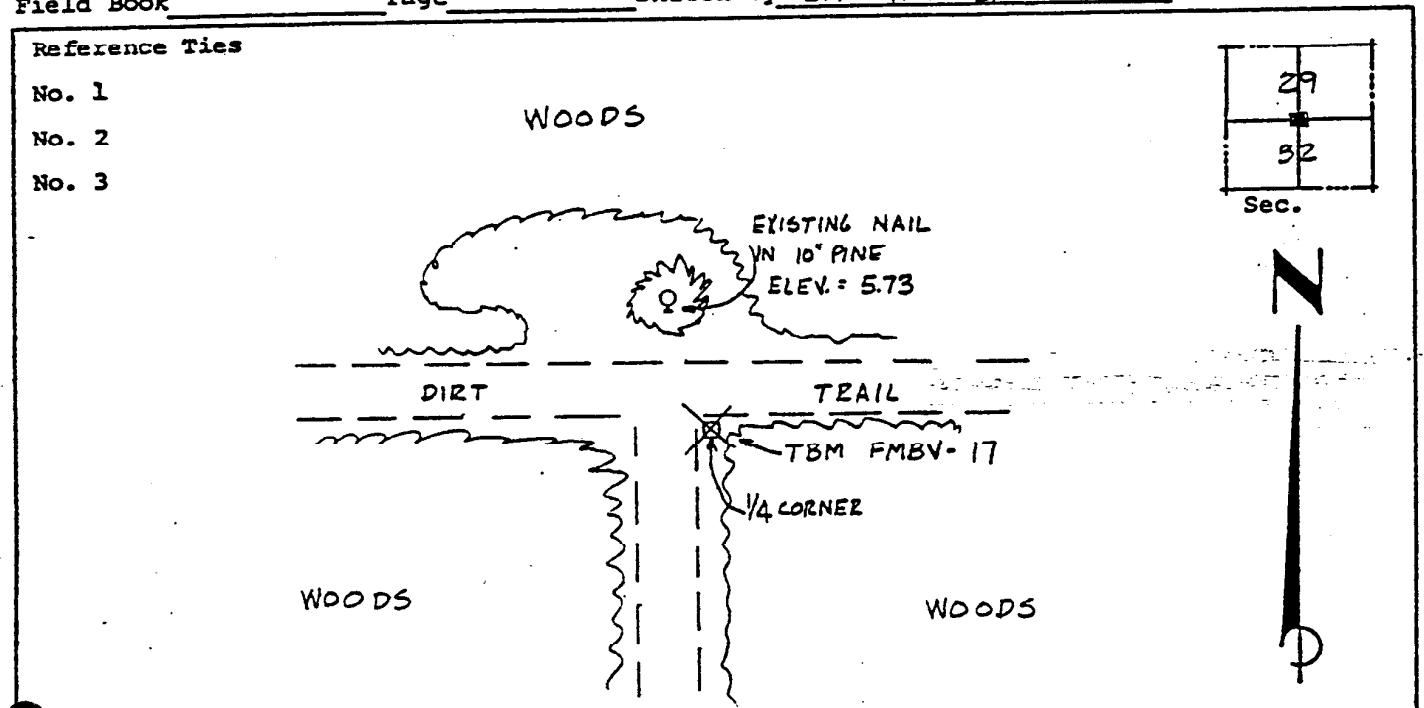
3rd Order

State and Zone Florida, Mercator West

Reference Bearings to Station or Object:

Description	Bearing	Distance

Field Book _____ Page _____ Sketch by B.R. HOMOLA



VERTICAL CONTROL originated on 1st order control established by USC & GS agency

in 1966, on National Geodetic Survey Datum of 1929 datum.

Elevation 3.72, 3rd Order Level Book V2 Page 45
(feet)