



Deni Associates

7025 N.W. 4th St. • Plantation, Florida 33317

LEE COUNTY, FLORIDA AERIAL MAPPING PROJECT

MAPPING BY
HAMRICK AERIAL SURVEYS, INC.
CLEARWATER, FLORIDA

Marker Designation TBM FMBV-19 County LEE State FL
Located in Sec. 26 Twp. 47S Rge. 25E U.S.G.S. Quad Map BONITA SPRINGS 7.5min.

To reach point from U.S. 41 & SR 865 - BONITA BEACH RD IN BONITA SPRINGS:
GO E. ON SR 865 1.7 MI ± TO TAMiami TR - SR 857- (OLD U.S. 41);
THENCE N. 1.0 MI ± TO TERRY ST.; THENCE
E. 0.5 MI ± TO TBM. (TERRY ST CHANGES INTO LEPORT ST.)

Type of Marker 3" SPR IN P. POLE Date set JAN. 19 81

HORIZONTAL CONTROL originated on _____ order control established by _____ agency
in _____, on _____ North American 1927 _____ datum.

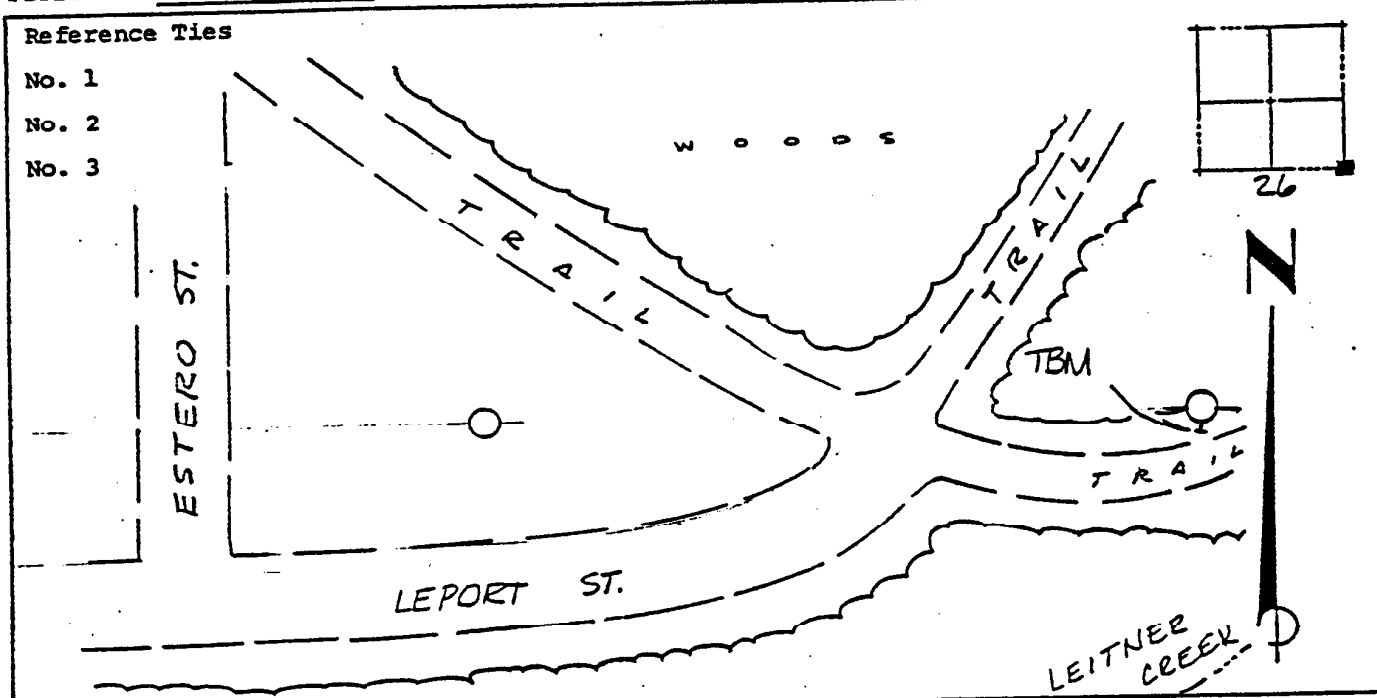
Coordinates: North (y) _____ East (x) _____
(feet)

3rd Order State and Zone Florida, Mercator West

Reference Bearings to Station or Object:

Description	Bearing	Distance

Field Book _____ Page _____ Sketch by D.W. ALBERTSEN



VERTICAL CONTROL originated on 1st order control established by USC & GS agency
in 1966, on National Geodetic Survey Datum of 1929 datum.

Elevation 10.90, 3rd Order Level Book V3 Page 27
(feet)