

# SURVEY MARK DESCRIPTION

**A**GNOLI  
**B**ARBER &  
**B**RUNDAGE, Inc.  
 Professional engineers, planners & land surveyors

NEW X

RECOVERED \_\_\_\_\_

DESTROYED \_\_\_\_\_

NAME OR DESIGNATION WT 2 COUNTY Lee STATE FL

LOCATED IN SEC 28 TWP 47S RGE 25E USGS QUAD MAP Bonita Springs

TO REACH SURVEY MARK FROM WT 2 is located 0.25 miles east of U.S. 41 (S.R. 45) on the north side of West Terry Street in Bonita Springs

DESCRIPTION OF MARK 2" aluminum cap set in 12" dia poured-in-place concrete with No. 5 rebar, stamped "ABB Inc. WT-2" DATE SET 3/14/97

HORIZONTAL CONTROL ORIGINATED ON First Order ESTABLISHED BY NGS

CONTROL MONUMENTS UTILIZED I 75 81 A 10 & I 75 81 A 14

RECOVERED BY ABB DATE, CONDITION 3/27/97, Good

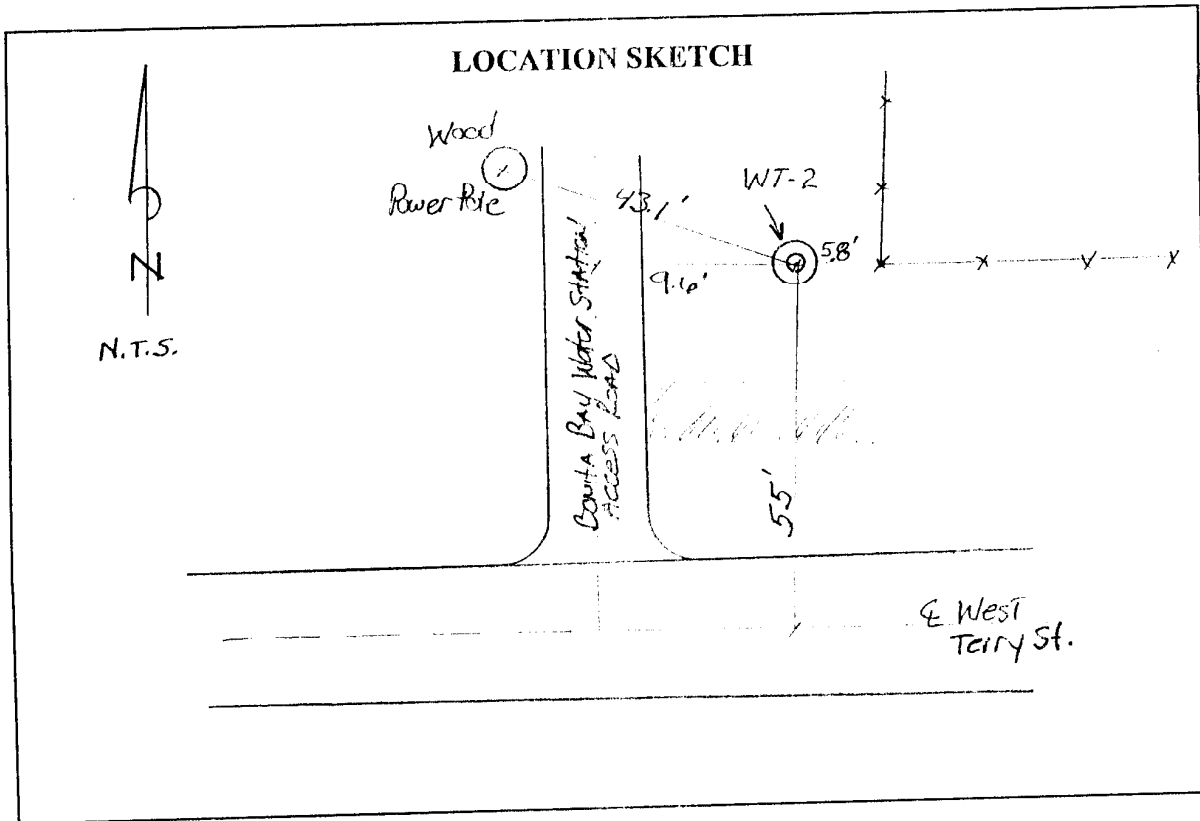
HORIZONTAL DATUM: NORTH AMERICAN DATUM OF 1983, 1990 ADJUSTMENT.

COORDINATES: Second ORDER, Class II

NORTHING (Y) 731999.798 (FT.) GRID Florida Transverse Mercator

EASTING (X) 720519.896 (FT.) ZONE West

FIELD BOOK \_\_\_\_\_ PAGE \_\_\_\_\_ SCALE FACTOR 0.99994592



VERTICAL CONTROL ORIGINATED ON 1st-I ORDER CONTROL ESTABLISHED BY NGS

ELEVATION 8.845 (FT) = 2.696 (M), 3rd ORDER NGVD 1929 FIELD BOOK 702 PAGE 4

ELEVATION \_\_\_\_\_ (FT) = \_\_\_\_\_ (M), \_\_\_\_\_ ORDER NAVD 1988 CONTROL MONUMENTS T-244