



Deni Associates
 RT. 3, 11355 MARSHWOOD LN. S.W.
 FORT MYERS, FL 33908

LEE COUNTY, FLORIDA
 AERIAL MAPPING PROJECT

MAPPING BY
 HAMRICK AERIAL SURVEYS, INC.
 CLEARWATER, FLORIDA

DESIGNATION TBM OF MV-63 COUNTY LEE STATE FL

LOCATED IN SEC 14 TWP 47S RGE 25E USGS QUAD MAP ESTERO

TO REACH SURVEY MARK FROM INT. OF US. 41 & CORK SCREW RD. IN ESTERO: GO E. ON CORK SCREW RD. 2.0 MI. ± TO T-75; THENCE S. 3.0 MI. ± TO MARK.

TYPE OF MARK 8" BRIDGE SPIKE IN FENCE CORNER DATE SET MAY 1982

HORIZONTAL CONTROL ORIGINATED ON _____ ORDER CONTROL ESTABLISHED BY _____

IN _____, ON _____

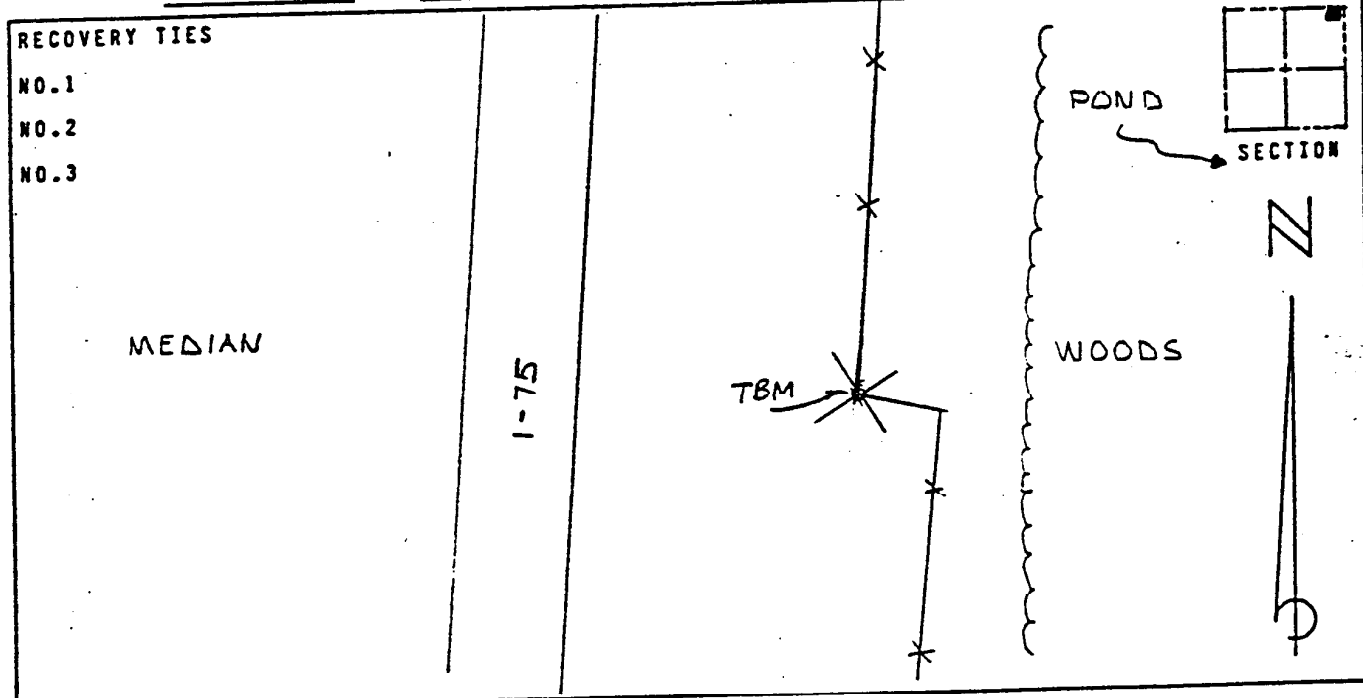
COORDINATES (FT) NORTH (Y) _____ EAST (X) _____

_____ ORDER STATE AND ZONE _____

REFERENCE BEARINGS TO STATION OR OBJECT

DESCRIPTION	BEARING	DISTANCE

FIELD BOOK _____ PAGE _____ SKETCH BY E.S. ELLER



VERTICAL CONTROL ORIGINATED ON 1ST ORDER CONTROL ESTABLISHED BY USC & GS

IN 1966, ON NATIONAL GEODETIC VERTICAL DATUM 1929

ELEVATION (FT) 16.71, 3RD ORDER LEVEL BOOK V9 PAGE 30