

Deni Associates

7025 N.W. 4th St. • Plantation, Florida 33317

LEE COUNTY, FLORIDA  
AERIAL MAPPING PROJECT

MAPPING BY  
HAMRICK AERIAL SURVEYS, INC.  
CLEARWATER, FLORIDA

Marker Designation TBM FMBV-25 County LEE State FL

Located in Sec. 17 Twp. 47S Rge. 29E U.S.G.S. Quad Map ESTERO 7.5min.

To reach point from US 41 BRIDGE OVER ESTERO RIVER IN ESTERO:

GO S. 2.5 MI ± TO COCONUT RD.; THENCE GO W. 0.95 MI ±

TO SPRING CREEK RD.; THENCE S. 1.0 MI ± TO 90° BEND IN

RD AND CONT. W. 0.2 MI ± TO TBM.

Type of Marker 8" SPK. IN E FACE OF P POLE Date set JANUARY 1981

HORIZONTAL CONTROL originated on \_\_\_\_\_ order control established by \_\_\_\_\_

in \_\_\_\_\_, on \_\_\_\_\_ North American 1927 \_\_\_\_\_ datum. \_\_\_\_\_ agency

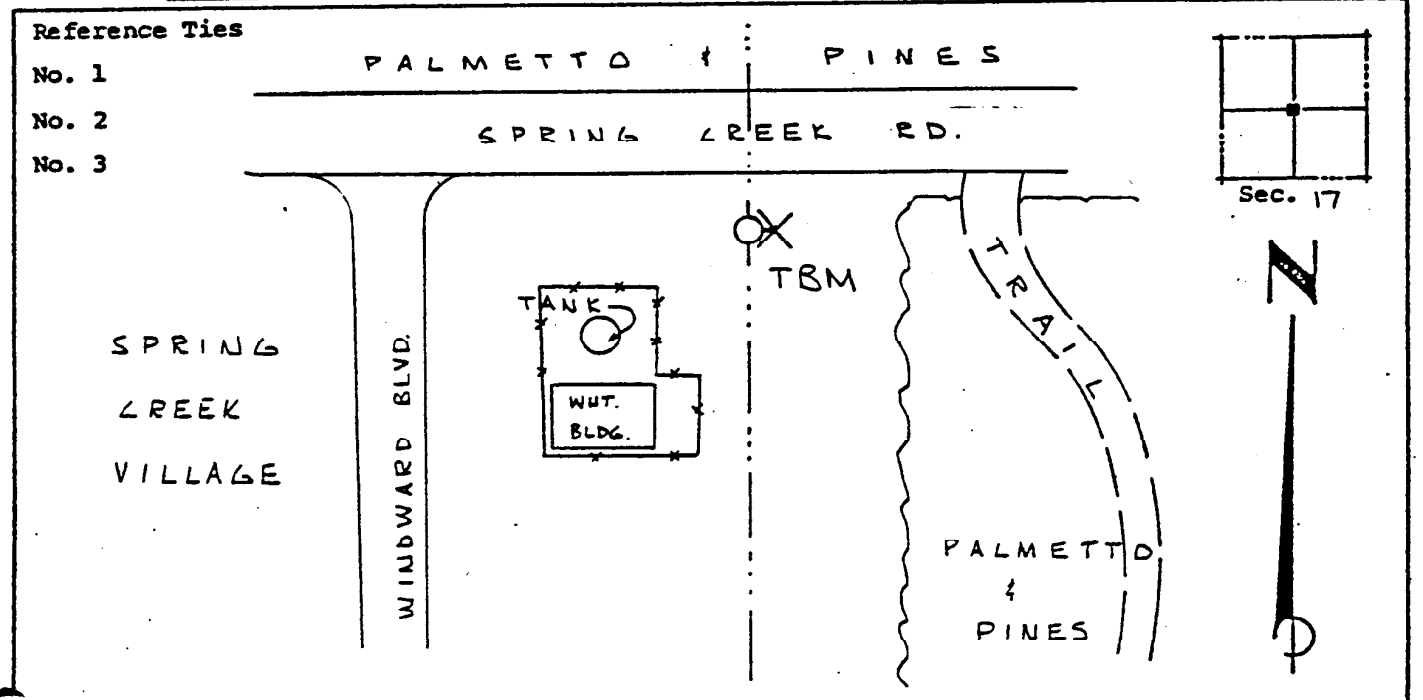
Coordinates: North (y) \_\_\_\_\_ East (x) \_\_\_\_\_

(feet) \_\_\_\_\_ 3rd Order State and Zone Florida, Mercator West

Reference Bearings to Station or Object:

Description	Bearing	Distance

Field Book \_\_\_\_\_ Page \_\_\_\_\_ Sketch by A LETHEBY



VERTICAL CONTROL originated on 1ST order control established by USC & GS agency

in 1966, on National Geodetic Survey Datum of 1929 datum.

year \_\_\_\_\_ Elevation 15.66, 3rd Order Level Book V2 Page 73

(feet) \_\_\_\_\_