



Deni Associates

7025 N.W. 4th St. Plantation, Florida 33317

LEE COUNTY, FLORIDA  
AERIAL MAPPING PROJECT

MAPPING BY  
HAMRICK AERIAL SURVEYS, INC.  
CLEARWATER, FLORIDA

Marker Designation TBM FMBV-26 County LEE State FL  
Located in Sec. 16/15 21/22 Twp. 47S Rge. 25E U.S.G.S. Quad Map ESTERO 7.5min.

To reach point from INT. OF US. BUS. 41 & SR. 865 IN BONITA SPRINGS. GO N.  
ON US. BUS. 41 3.7 MI.± TO SCL RR. & MARKER.

Type of Marker TOP OF CONG. SQUARE POST ±2' ABOVE GROUND Date set JAN. 19 81

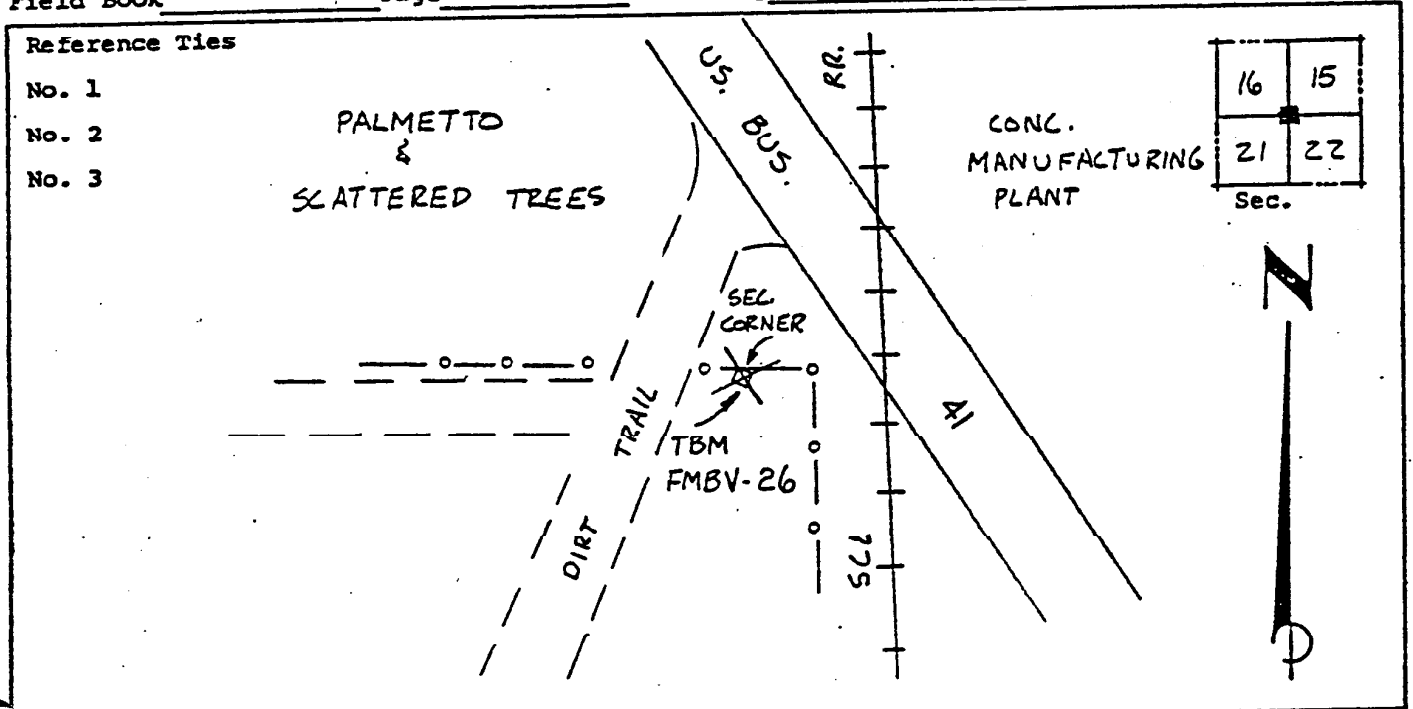
HORIZONTAL CONTROL originated on \_\_\_\_\_ order control established by \_\_\_\_\_ agency  
in \_\_\_\_\_, on \_\_\_\_\_ North American 1927 \_\_\_\_\_ datum.

Coordinates: North (y) \_\_\_\_\_ East (x) \_\_\_\_\_  
(feet) \_\_\_\_\_  
3rd Order State and Zone Florida, Mercator West

Reference Bearings to Station or Object:

Description	Bearing	Distance

Field Book \_\_\_\_\_ Page \_\_\_\_\_ Sketch by B.R. HOMOLA



VERTICAL CONTROL originated on 1<sup>st</sup> order control established by USC & GS agency  
in 1966, on National Geodetic Survey Datum of 1929 datum.  
Elevation 15.71, 3rd Order Level Book V2 Page 61  
(feet)