



Dani Associates

7025 N.W. 4th St. - Plantation, Florida 33317

LEE COUNTY, FLORIDA  
AERIAL MAPPING PROJECT

MAPPING BY  
HAMRICK AERIAL SURVEYS, INC.  
CLEARWATER, FLORIDA

Marker Designation USC & GS T 244 County LEE State FL

Located in Sec. 9 Twp. 47S Rge. 25E U.S.G.S. Quad Map ESTERO 7.5min

To reach point from US 41 BRIDGE OVER ESTERO RIVER IN ESTERO:  
GO S. 2.5 MI ± TO COCONUT RD. & BM

Type of Marker STD. USC & GS BRASS DISC. SET IN CONC. Date <sup>REMOVED</sup> JANUARY 19 81

HORIZONTAL CONTROL originated on \_\_\_\_\_ order control established by \_\_\_\_\_ agency

in \_\_\_\_\_, on North American 1927 datum.

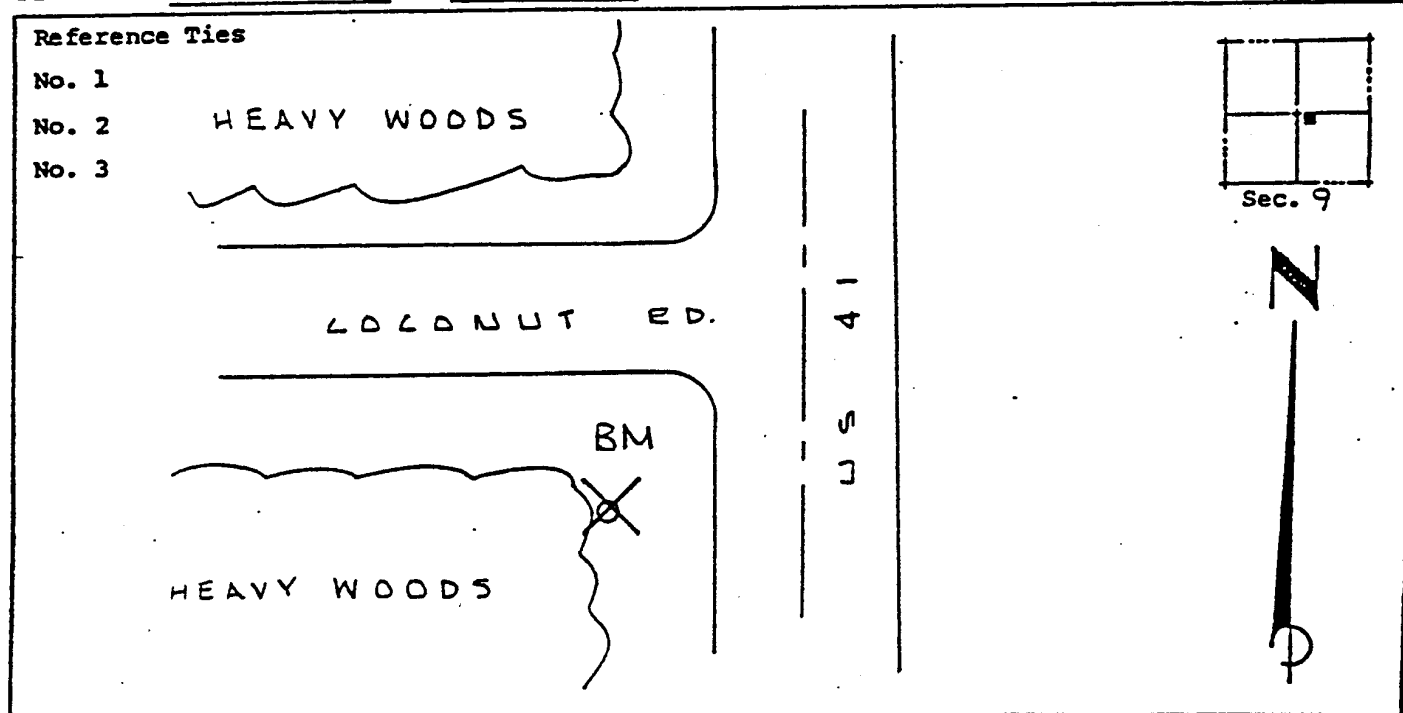
Coordinates: North (y) \_\_\_\_\_ East (x) \_\_\_\_\_  
(feet)

3rd Order State and Zone Florida, Mercator West

Reference Bearings to Station or Object:

Description	Bearing	Distance

Field Book \_\_\_\_\_ Page \_\_\_\_\_ Sketch by A. LETHBY



VERTICAL CONTROL originated on 1st order control established by USC & GS agency

in 1966, on National Geodetic Survey Datum of 1929 datum.

Elevation 14.678, 3rd Order Level Book VI Page 71  
(feet)