



Deni Associates

7025 N.W. 4th St. - Plantation, Florida 33317

LEE COUNTY, FLORIDA AERIAL MAPPING PROJECT

MAPPING BY
HAMRICK AERIAL SURVEYS, INC.
CLEARWATER, FLORIDA

Marker Designation USC & GS J 246 County LEE State FL

Located in Sec. 8 Twp. 47S Rge. 25E U.S.G.S. Quad Map ESTERO 7.5min.

To reach point from US 41 BRIDGE OVER ESTERO RIVER IN ESTERO:
GO E. 2.5 MI ± TO COCONUT RD.; THENCE GO W. 1.5 MI ±
TO BM

Type of Marker STD USC & GS DISC. SET ON STEEL ROD Date ^{RECOVERED} JANUARY 19 81

HORIZONTAL CONTROL originated on _____ order control established by _____
in _____, on North American 1927 datum. _____ agency

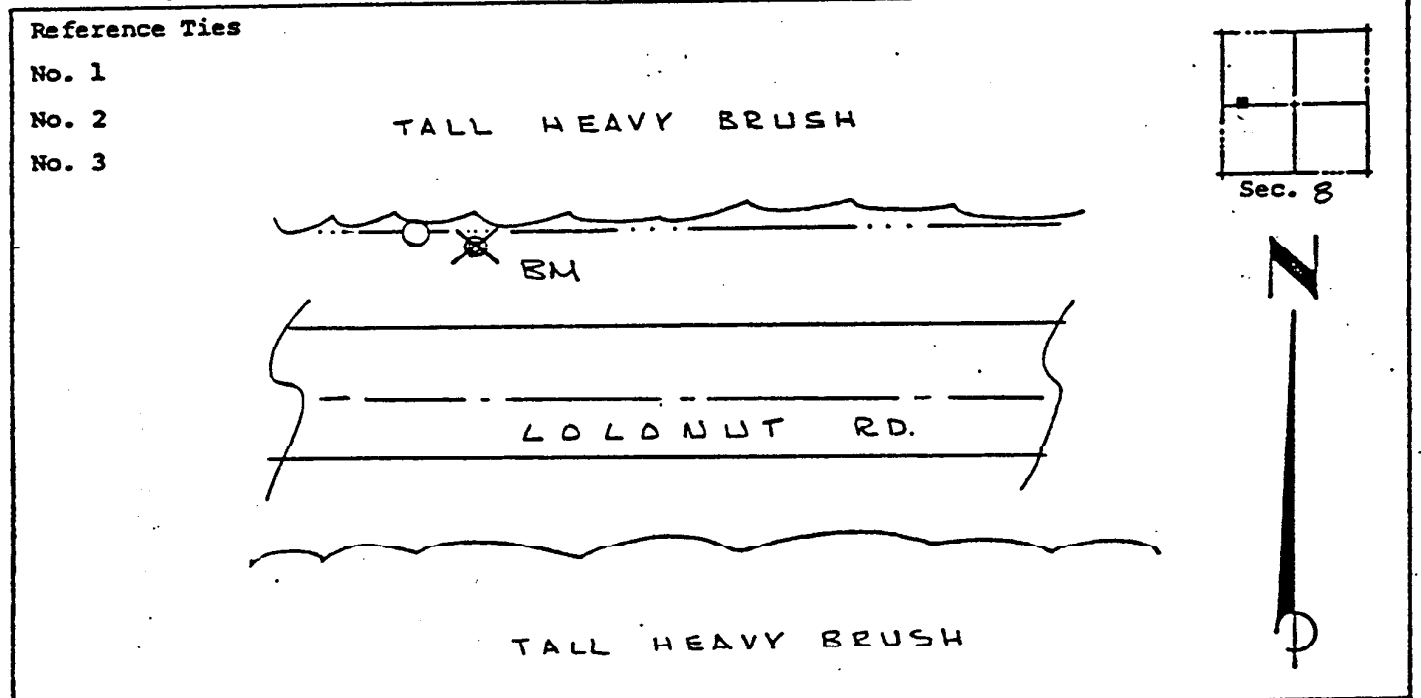
Coordinates: North (y) _____ East (x) _____
(feet)

3rd Order State and Zone Florida, Mercator West

Reference Bearings to Station or Object:

Description	Bearing	Distance

Field Book _____ Page _____ Sketch by A. LETHEBY



VERTICAL CONTROL originated on 1st order control established by USC & GS agency

in 1966, on National Geodetic Survey Datum of 1929 datum.

Elevation 4.728, 3rd Order Level Book VI Page 63
(feet)