



7025 N.W. 4th St. - Plantation, Florida 33317

U.S.D.A. SOIL CONSERVATION SERVICE  
MAPPING BY  
HAMRICK AERIAL SURVEYS, INC.  
CLEARWATER, FLORIDA

Marker Designation TBM SV-21 County LEE State FL

Located in Sec. 5 Twp. 43 S. Rge. 25 E. U.S.C.S. Quad Map TUCKERS CORNER 7.5min

To reach point from INT. OF US 41 & SR. 78 IN N. FT. MYERS. GO E. ON SR. 78  
3.6 MI ± TO SLATER RD. THENCE N. 4.0 MI ± TO NALLE GRADE RD. THENCE  
E. 1.5 MI ± TO WILLIAMS RD. THENCE N. 1.0 MI ± TO MARKER.

Type of Marker 8" SPIKE IN E. FACE OF P. POLE Date set NOV. - DEC. 19 80

HORIZONTAL CONTROL originated on \_\_\_\_\_ order control established by \_\_\_\_\_ agency

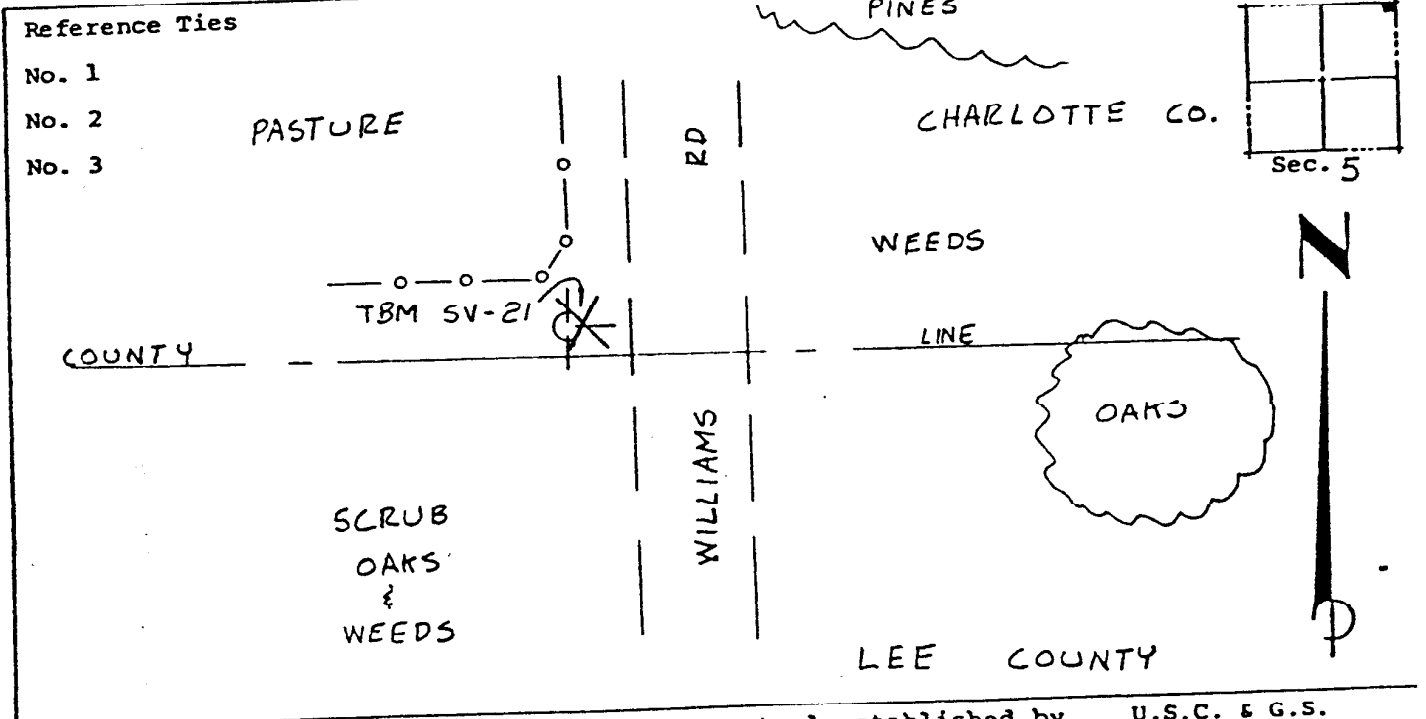
in \_\_\_\_\_, on North American 1927 datum.

Coordinates: North (y) \_\_\_\_\_ East (x) \_\_\_\_\_  
(feet) 3rd Order State and Zone Florida, Mercator West

Reference Bearings to Station or Object:

Description	Bearing	Distance

Field Book 1 Page \_\_\_\_\_ Sketch by B. R. HOMOLA



VERTICAL CONTROL originated on 1st order control established by U.S.C. & G.S. agency

in 1966, on National Geodetic Survey Datum of 1929 datum.

Elevation 25.33, 3rd Order Level Book 3 Page 26