



Dani Associates

7025 N.W. 4th St. • Plantation, Florida 33317

LEE COUNTY, FLORIDA AERIAL MAPPING PROJECT

MAPPING BY
HAMRICK AERIAL SURVEYS, INC.
CLEARWATER, FLORIDA

Marker Designation USC & GS TIDAL STA 9C
BM NO. 3 County LEE State FL

Located in Sec. 3 Twp. 47S, Rge. 24E U.S.G.S. Quad Map FT. MYERS BEACH 7.5mi

To reach point from INT. OF SAN CARLOS BLVD. / RT. 865 & ESTERO
BLVD. / RT. 865 (SIGNAL LIGHT) AT FT. MYERS BEACH: GO
SE ON ESTERO BLVD. 5.95 MI. = TO BRIDGE & BM

Type of Marker STANDARD DISC ON WHEEL Date ^{RECOVERED} set AUGUST 19 80

HORIZONTAL CONTROL originated on 2nd order ^{GUARD} control established by FLA. D. O. T.
in year, on North American 1927 datum. agency

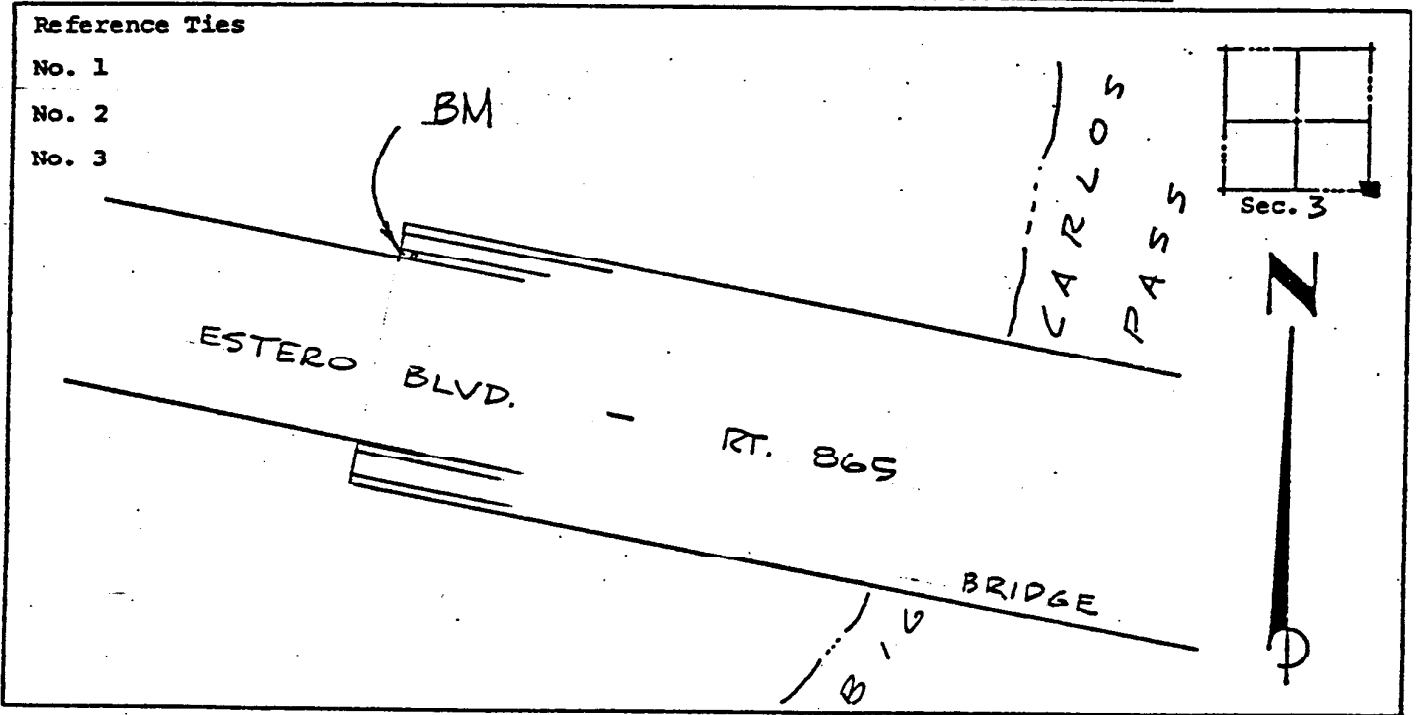
Coordinates: North (y) _____ East (x) _____
(feet)

3rd Order State and Zone Florida, Mercator West

Reference Bearings to Station or Object:

Description	Bearing	Distance

Field Book _____ Page _____ Sketch by D.W. ALBERTSEN



VERTICAL CONTROL originated on 1st order control established by USC & GS
in 1966, on National Geodetic Survey Datum of 1929 datum. agency

year
Elevation 10.997, 1st Order Level Book _____ Page _____
(feet) 3rd