



Deni Associates

7025 N.W. 4th St. - Plantation, Florida 33317

LEE COUNTY, FLORIDA
AERIAL MAPPING PROJECT

MAPPING BY
HAMRICK AERIAL SURVEYS, INC.
CLEARWATER, FLORIDA

Marker Designation USCGS BOOB 2 County LEE State FL
Located in Sec. 3 Twp. 47 S. Rge. 24 E. U.S.G.S. Quad Map FT. MYERS BEACH 7.5min.

To reach point from INT. OF SAN CARLOS BLVD. / RT. 865 & ESTERO
BLVD / RT. 865 (SIGNAL LIGHT) AT FT MYERS BEACH: GO SE ON
ESTERO BLVD. 5.1 MI. E TO BULLANEER DR. & POINT.

Type of Marker STANDARD DISC IN CONG. POST, PROJ. Date ^{Recovered} AUGUST 19 80

HORIZONTAL CONTROL originated on ^{D.S. ABV. ORD.} 2nd order control established by FLA. D. O. T. agency

in 1973, on North American 1927 datum.

Coordinates: North (y) 753526.170 East (x) 533958.479
(feet)

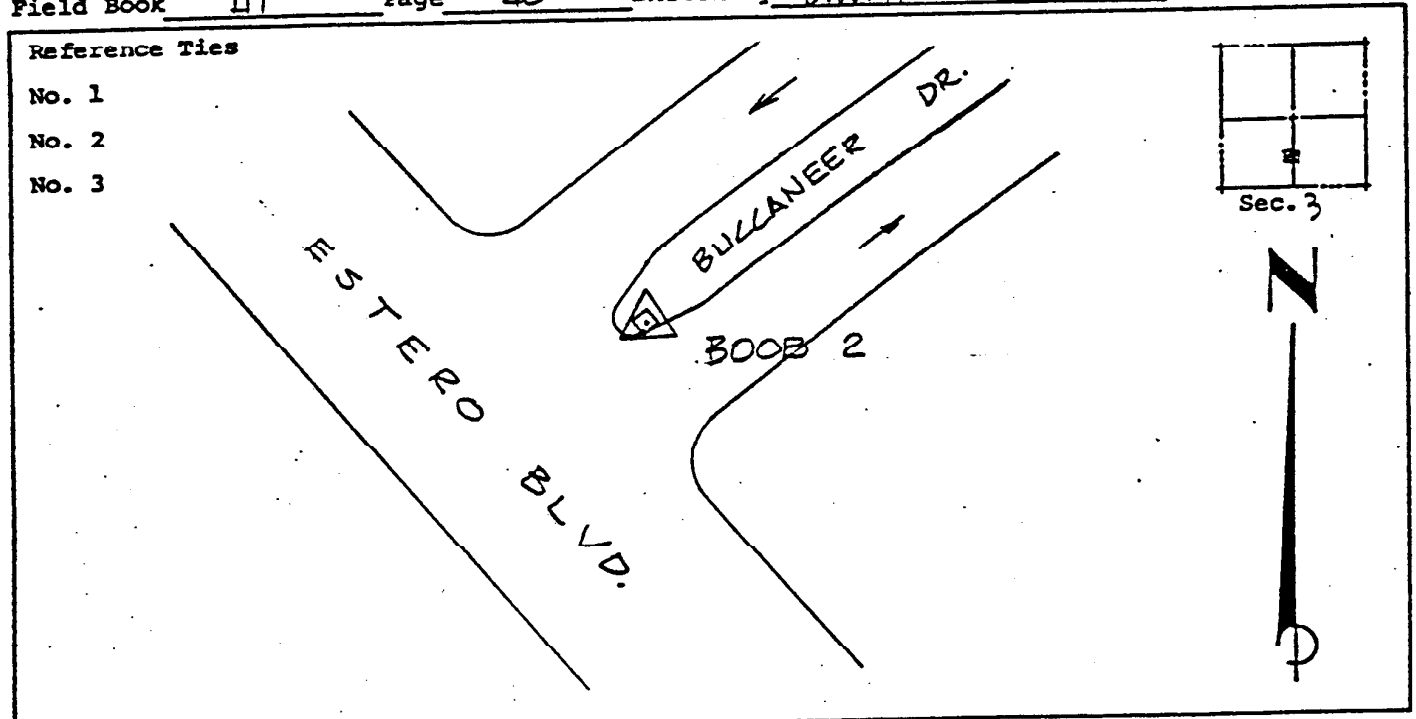
3rd Order

State and Zone Florida, Mercator West

Reference Bearings to Station or Object:

Description	Bearing	Distance
<u>FMB-10</u>	<u>N 36° 21' 11.0" W</u>	<u>2085.263</u>
<u>FMB-11</u>	<u>S 18° 37' 17.1" E</u>	<u>373.051</u>

Field Book 411 Page 40 Sketch by D.W. ALBERTSEN



VERTICAL CONTROL originated on 1ST order control established by USCGS agency

in 1966, on National Geodetic Survey Datum of 1929 datum.

Elevation 6.250, 3rd Order Level Book V1 Page 33
(feet)