



Deni Associates

7025 N.W. 4th St. • Plantation, Florida 33317

LEE COUNTY, FLORIDA
AERIAL MAPPING PROJECT

MAPPING BY
HAMRICK AERIAL SURVEYS, INC.
CLEARWATER, FLORIDA

Marker Designation USC & GS J-245 County LEE State FL
BM

Located in Sec. 34 Twp. 46 S. Rge. 24 E. U.S.G.S. Quad Map FT. MYERS BEACH 7.5min.

To reach point from INT. OF SAN CARLOS BLVD. / RT. 865 & ESTERO
BLVD. / RT. 865 (SIGNAL LIGHT) AT FT. MYERS BEACH: GO
SE ON ESTERO BLVD. 3.9 MI ± TO CURLEW ST &
BM.

Type of Marker STANDARD DISC IN CONC. ABUT. Date ^{recovered} oct AUGUST 19 80

HORIZONTAL CONTROL originated on 2nd order control established by FLA. D. O. T.
in year, on North American 1927 datum. agency

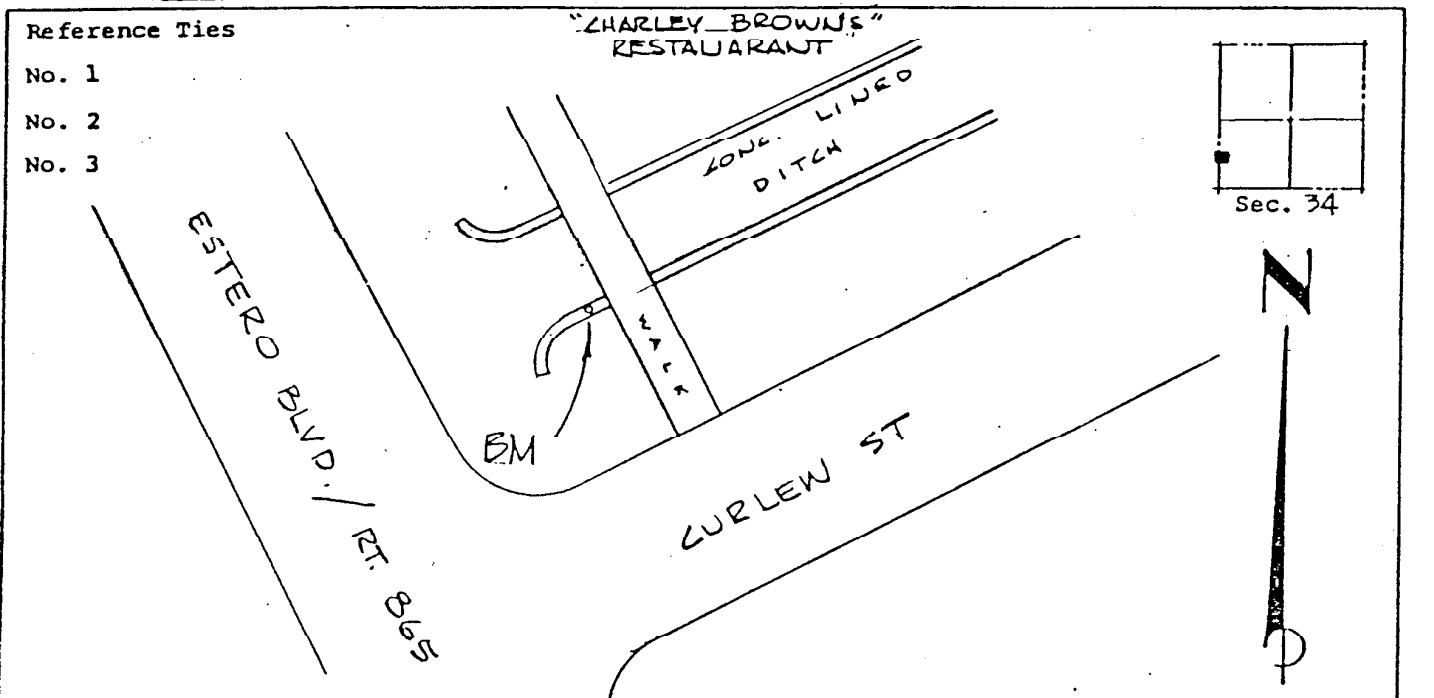
Coordinates: North (y) _____ East (x) _____
(feet)

3rd Order State and Zone Florida, Mercator West

Reference Bearings to Station or Object:

Description	Bearing	Distance

Field Book _____ Page _____ Sketch by D.W. ALBERTSEN



VERTICAL CONTROL originated on 1st order control established by USC & GS
in 1966, on National Geodetic Survey Datum of 1929 datum. agency

year 1966, on National Geodetic Survey Datum of 1929 datum.
elevation 04.094 3rd Order Level Book Page