



Deni Associates

7025 N.W. 4th St. • Plantation, Florida 33317

LEE COUNTY, FLORIDA  
AERIAL MAPPING PROJECT

MAPPING BY  
HAMRICK AERIAL SURVEYS, INC.  
CLEARWATER, FLORIDA

Marker Designation USL & 65  
BM H-245 County LEE State FL

Located in Sec. 33 Twp. 46 S. Rge. 24 E. U.S.G.S. Quad Map FT. MYERS BEACH 7.5min.

To reach point from INT. OF SAN CARLOS BLVD. / RT. 865 & ESTERO  
BLVD. / RT. 865 (SIGNAL LIGHT) AT FT. MYERS BEACH: GO  
SE ON ESTERO BLVD. 3.0 MI. ± TO DAKOTA AV. & BM.

Type of Marker STANDARD DISC IN CONK. POST Date <sup>recovered</sup> AUGUST 19 80

HORIZONTAL CONTROL originated on 2nd order control established by FLA. D. O. T.  
in \_\_\_\_\_, on North American 1927 datum. agency

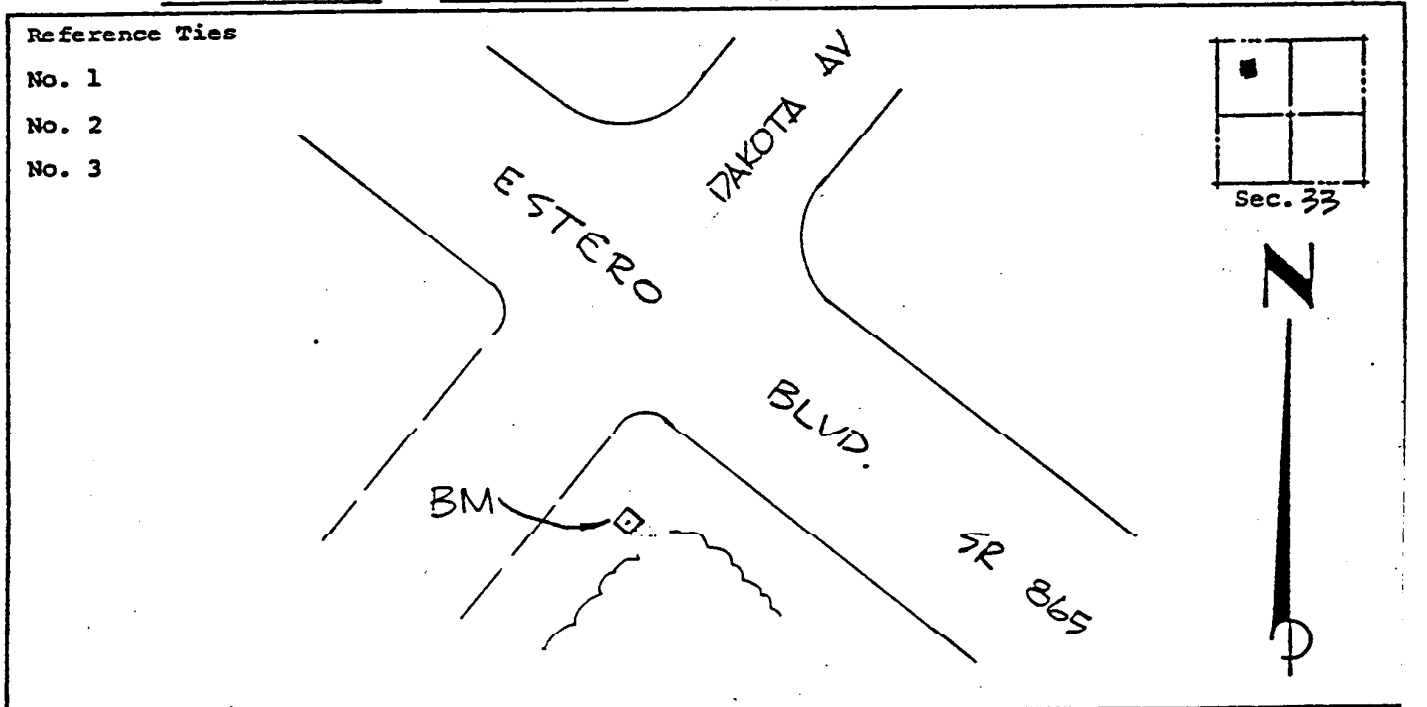
Coordinates: North (y) \_\_\_\_\_ East (x) \_\_\_\_\_  
(feet)

3rd Order State and Zone Florida, Mercator West

Reference Bearings to Station or Object:

| Description | Bearing | Distance |
|-------------|---------|----------|
|             |         |          |
|             |         |          |
|             |         |          |

Field Book \_\_\_\_\_ Page \_\_\_\_\_ Sketch by D.W. ALBERTSEN



VERTICAL CONTROL originated on 1st order control established by USL & 65  
in 1966, on National Geodetic Survey Datum of 1929 datum. agency

Elevation 5.272, <sup>1st</sup>~~3rd~~ Order Level Book \_\_\_\_\_ Page \_\_\_\_\_  
(feet)