



Dani Associates

7025 N.W. 4th St. • Plantation, Florida 33317

LEE COUNTY, FLORIDA AERIAL MAPPING PROJECT

MAPPING BY
HAMRICK AERIAL SURVEYS, INC.
CLEARWATER, FLORIDA

Marker Designation BM G-245 (USCGS) County LEE State FL

Located in Sec. 29 Twp. 46S Rge. 24E U.S.G.S. Quad Map FORT MYERS BEACH 7.5min.

To reach point from _____
MARKER AT THE INT. OF ESTERO BLVD. AND MANDALAY RD
ON ESTERO ISLAND.

Type of Marker BRASS CAP SET IN CONC. Date ~~set~~ ^{REMOVED} AUGUST 19 80

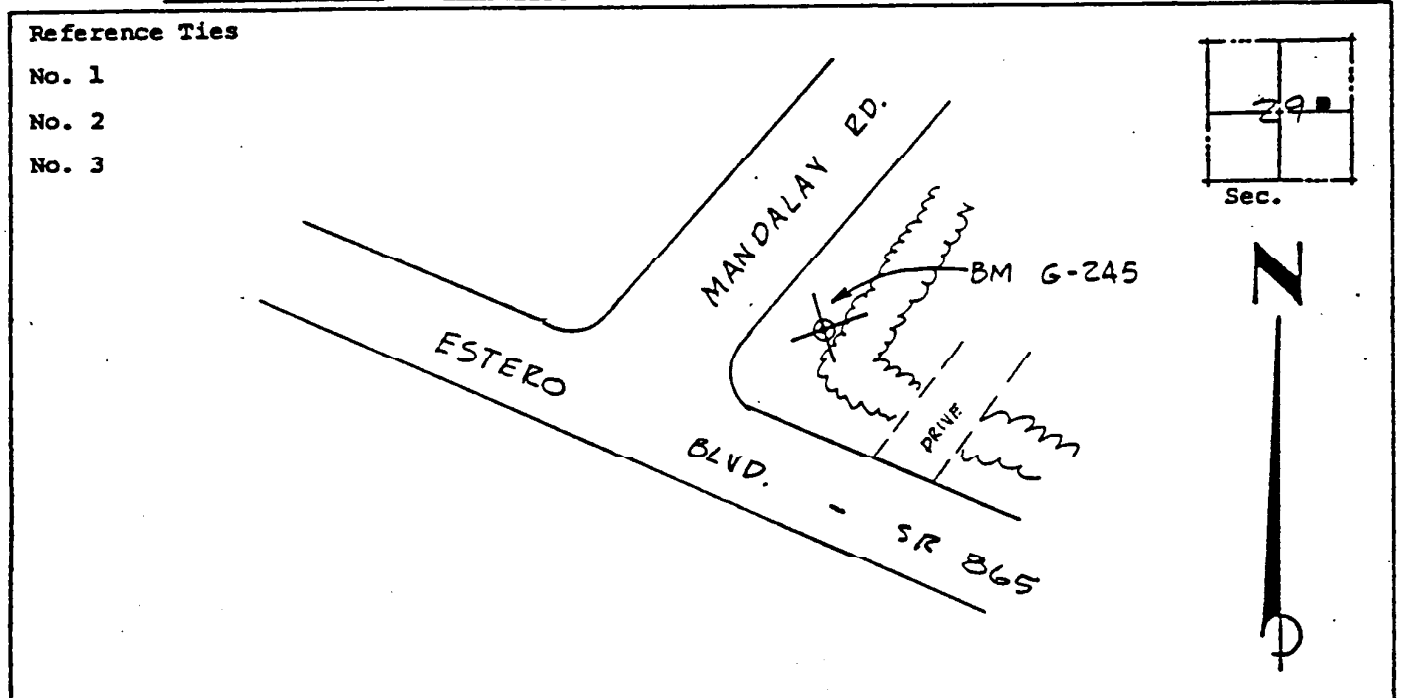
HORIZONTAL CONTROL originated on 2nd order control established by FLA. D. O. T.
in _____, on North American 1927 datum. agency

Coordinates: North (y) _____ East (x) _____
(feet)

3rd Order State and Zone Florida, Mercator West
Reference Bearings to Station or Object:

Description	Bearing	Distance

Field Book _____ Page _____ Sketch by B.R. HOMOLA



VERTICAL CONTROL originated on 1st order control established by USCGS agency

in 1966, on National Geodetic Survey Datum of 1929 datum.
Elevation 06.158, 3rd Order Level Book V2 Page 37
(feet)