



Deni Associates

RT. 3, 11555 MARSHWOOD LN. SW.  
FORT MYERS, FL 33908

LEE COUNTY, FLORIDA  
AERIAL MAPPING PROJECT

MAPPING BY  
HAMRICK AERIAL SURVEYS, INC.  
CLEARWATER, FLORIDA

DESIGNATION TBM SFMV-17 COUNTY LEE STATE FL  
LOCATED IN SEC 3 TWP 46S RGE 24E USGS QUAD MAP FORT MYERS SW.

TO REACH SURVEY MARK FROM INT. OF MCGREGOR BLVD. & GLADIOLUS DR. IN SW. FORT MYERS: GO E. ON GLADIOLUS DR. 2.5 MI. ± TO TRANSMISSION LINES; THENCE S. 0.75 MI. ± TO MARK.

TYPE OF MARK CONC. POST FOR SECTION CORNER DATE SET FEB. 19 82

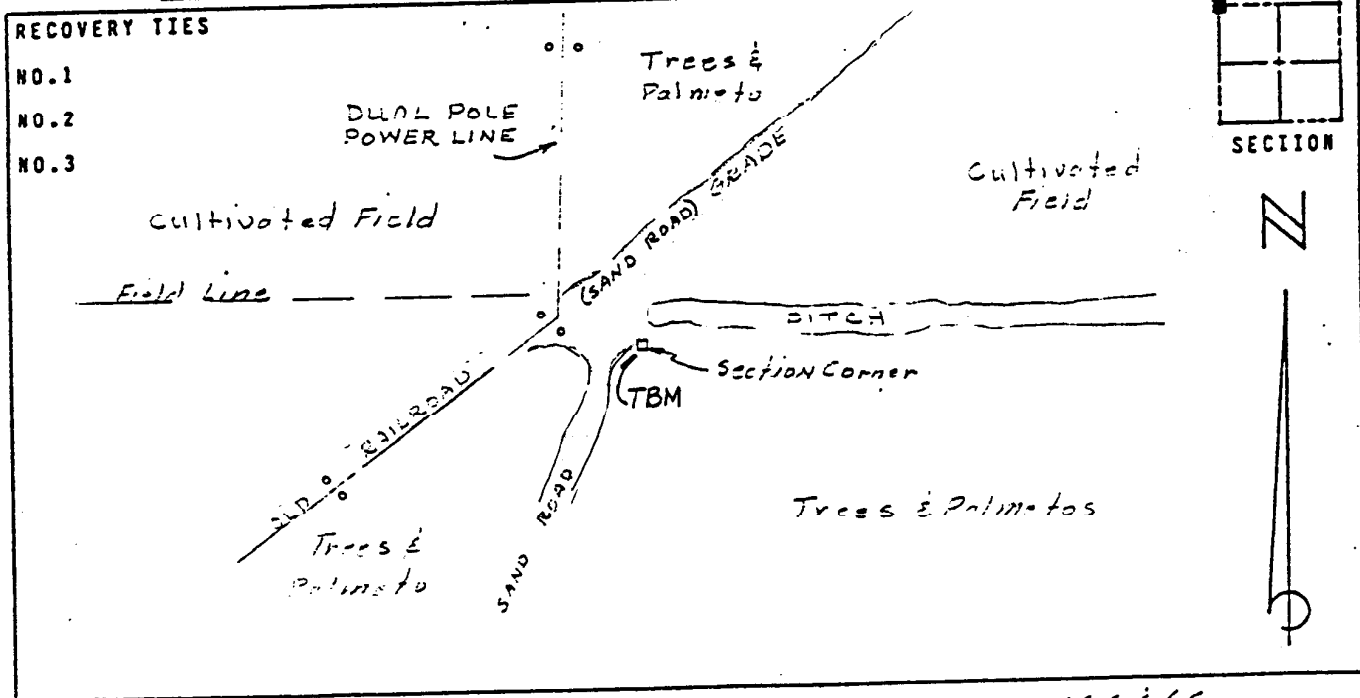
HORIZONTAL CONTROL ORIGINATED ON \_\_\_\_\_ ORDER CONTROL ESTABLISHED BY \_\_\_\_\_  
IN \_\_\_\_\_, ON \_\_\_\_\_

COORDINATES (FT) NORTH (Y) \_\_\_\_\_ EAST (X) \_\_\_\_\_  
\_\_\_\_\_ ORDER STATE AND ZONE \_\_\_\_\_

REFERENCE BEARINGS TO STATION OR OBJECT

DESCRIPTION	BEARING	DISTANCE

FIELD BOOK \_\_\_\_\_ PAGE \_\_\_\_\_ SKETCH BY B. RENFRO



VERTICAL CONTROL ORIGINATED ON 1<sup>ST</sup> ORDER CONTROL ESTABLISHED BY USC & GS  
IN 1966, ON NATIONAL GEODETIC VERTICAL DATUM 1929.

ELEVATION (FT) 06.91, 3<sup>RD</sup> ORDER LEVEL BOOK V 7 PAGE 21