



Deni Associates

7025 N.W. 4th St. - Plantation, Florida 33317

LEE COUNTY, FLORIDA
AERIAL MAPPING PROJECT

MAPPING BY
HAMRICK AERIAL SURVEYS, INC.
CLEARWATER, FLORIDA

X

Marker Designation USC&GS BM D 245 County LEE State FL

Located in Sec. 7 Twp. 46 S. Rge. 25 E. U.S.G.S. Quad Map FT. MYERS BEACH 7.5min.

To reach point from INT. OF SAN CARLOS BLVD / RT 865 & ESTERO BLVD / RT 865 (SIGNAL LIGHT) AT FT. MYERS BEACH: GO NINE ON SAN CARLOS BLVD. 2.1 MI ± TO BM.

Type of Marker STD USC&GS DISC ON CONC. POST Date ^{recovered} set AUGUST 19 80

HORIZONTAL CONTROL originated on _____ order control established by _____ agency in _____, on _____ North American 1927 _____ datum.

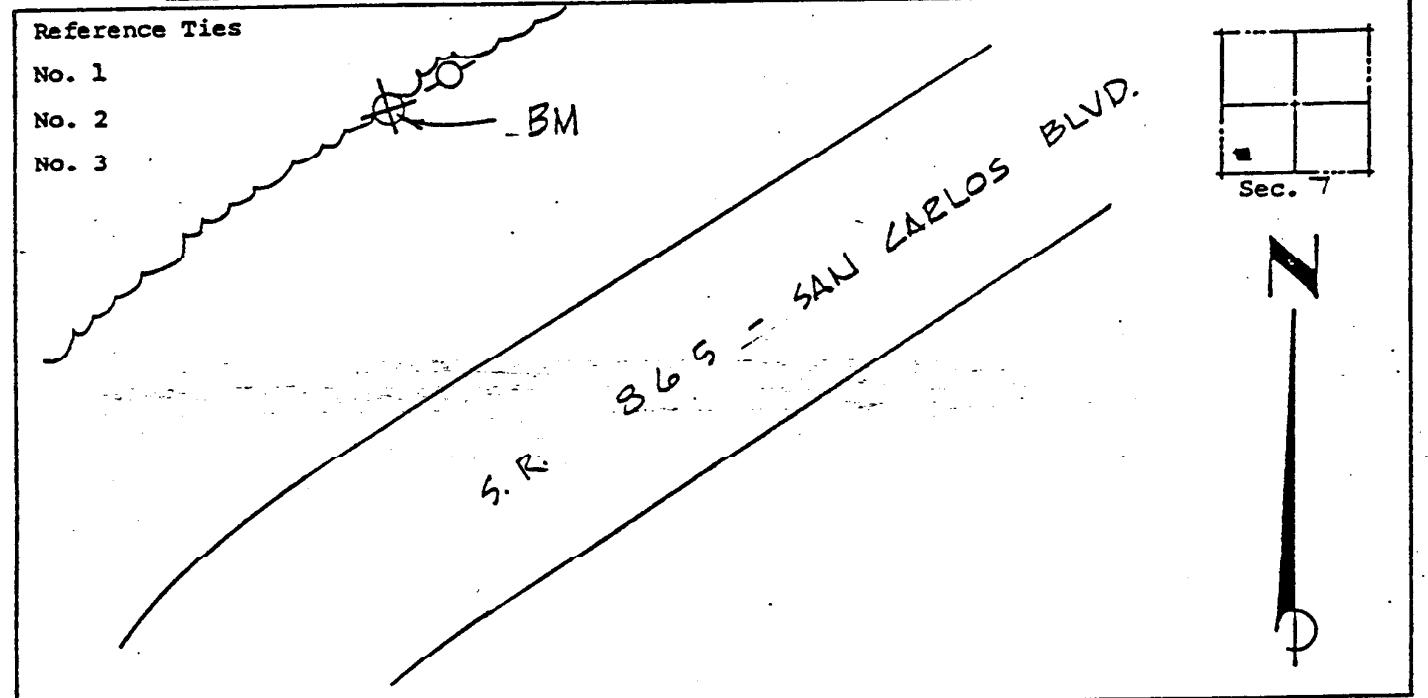
Coordinates: North (y) _____ East (x) _____ (feet)

3rd Order State and Zone Florida, Mercator West

Reference Bearings to Station or Object:

Description	Bearing	Distance

Field Book _____ Page _____ Sketch by D.W. ALBERTSEN



VERTICAL CONTROL originated on 1st order control established by USC&GS agency

in 1966, on National Geodetic Survey Datum of 1929 datum.

Elevation 03.01, ^{1st} ~~3rd~~ Order Level Book _____ Page _____ (feet)