



Deni Associates
 RT. 3, 11555 MARSHWOOD LN. S.W.
 FORT MYERS, FL 33908

X

LEE COUNTY, FLORIDA
 AERIAL MAPPING PROJECT

MAPPING BY
 HAMRICK AERIAL SURVEYS, INC.
 CLEARWATER, FLORIDA

DESIGNATION TBM SFMV - 25 COUNTY LEE STATE FL.

LOCATED IN SEC 1 TWP 46S RGE 24E USGS QUAD MAP FT. MYERS S.E.

TO REACH SURVEY MARK FROM INT. SR 865 & US 41; 60 S. 1.4 MI. TO INT.
FOREST BLVD & US 41; THENCE W. 0.2 MI. TO BOBCAT DR.; THENCE
100' N. TO MARK.

TYPE OF MARK CHISELED IN W. BOLT FIREHYDRANT DATE SET MARCH 19 82

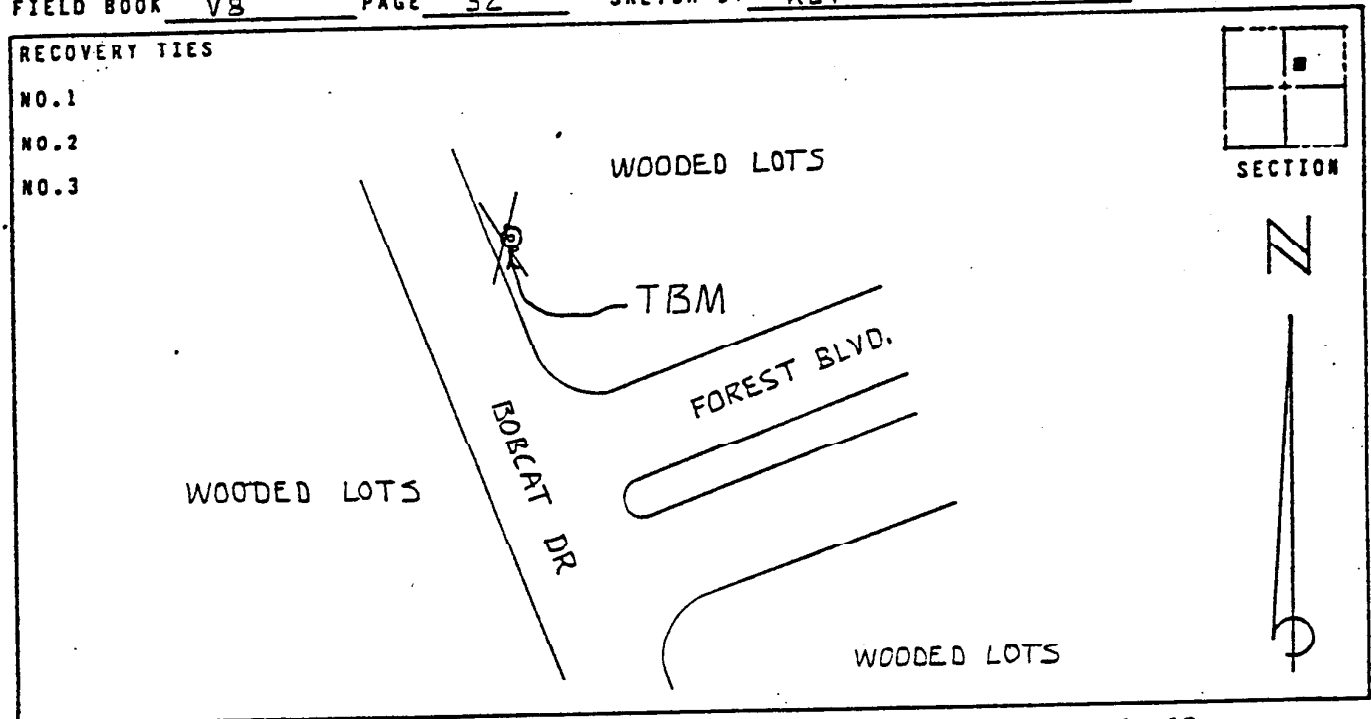
HORIZONTAL CONTROL ORIGINATED ON _____ ORDER CONTROL ESTABLISHED BY _____
 IN _____, ON _____

COORDINATES (FT) NORTH (Y) _____ EAST (X) _____
 _____ ORDER STATE AND ZONE _____

REFERENCE BEARINGS TO STATION OR OBJECT

DESCRIPTION	BEARING	DISTANCE
_____	_____	_____
_____	_____	_____
_____	_____	_____

FIELD BOOK V8 PAGE 32 SKETCH BY KET



VERTICAL CONTROL ORIGINATED ON 1ST. ORDER CONTROL ESTABLISHED BY USC & GS

IN 1966, ON NATIONAL GEODETIC VERTICAL DATUM 1929

ELEVATION (FT) 08.31 3RD ORDER LEVEL BOOK V8 PAGE 32