



Deni Associates

7025 N.W. 4th St. • Plantation, Florida 33317

LEE COUNTY, FLORIDA
AERIAL MAPPING PROJ

MAPPING BY
HAMRICK AERIAL SURVEYS, INC.
CLEARWATER, FLORIDA

Marker Designation TBM FMBV-7 County LEE State FL

Located in Sec. 24 Twp. 46S Rge. 23E U.S.G.S. Quad Map FORT MYERS BEACH 7.5

To reach point from _____
MARKER NEAR NW. END OF ESTERO ISLAND AT THE END OF
ESTERO BLVD.

Type of Marker CHISELED 'T' SET VERTICAL IN CONK. P. POLE Date set AUGUST 19 80

HORIZONTAL CONTROL originated on 2nd order control established by FLA. D. O. T.

in _____, on _____ North American 1927 _____ datum. agency _____

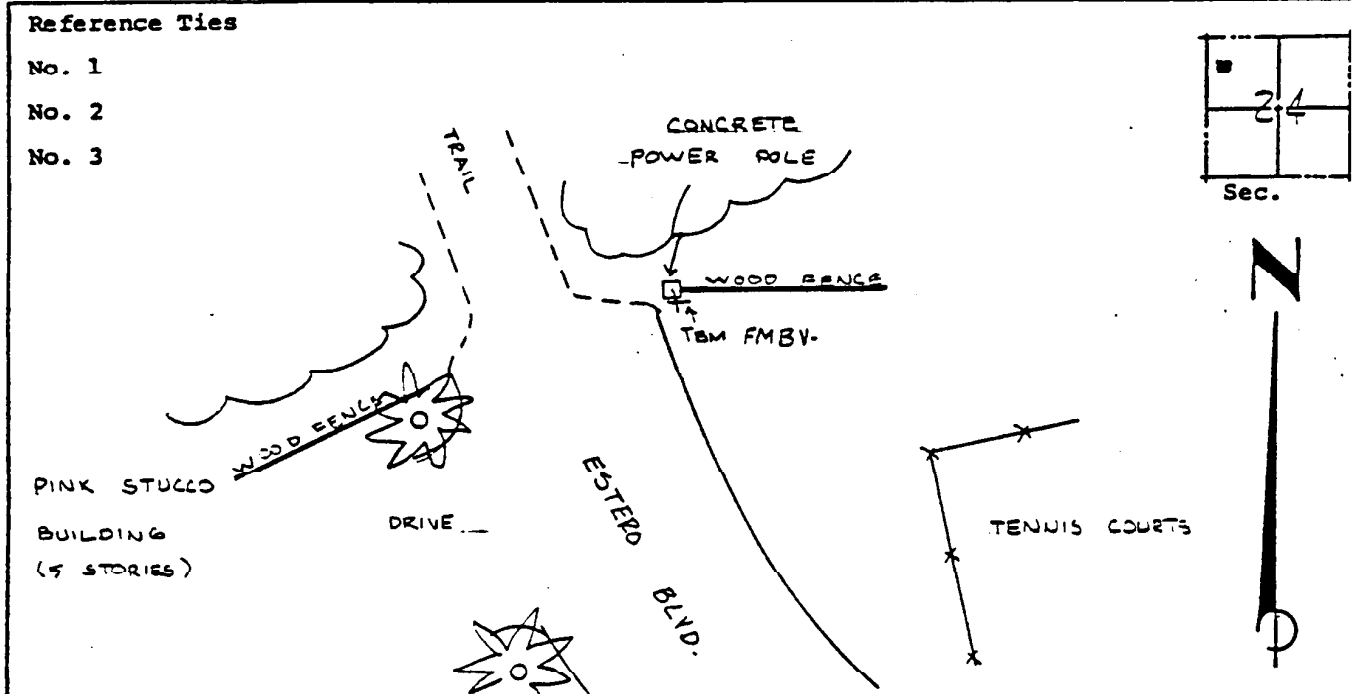
Coordinates: North (y) _____ East (x) _____
(feet)

3rd Order State and Zone Florida, Mercator West

Reference Bearings to Station or Object:

Description	Bearing	Distance

Field BOOK _____ Page _____ Sketch by M.M. HOMOLA



VERTICAL CONTROL originated on 1st order control established by USCGS agency

in 1966 year, on National Geodetic Survey Datum of 1929 datum.

Elevation 07.45 (feet), 3rd Order Level Book VZ Page 34