



# Deni Associates

7025 N.W. 4th St. • Plantation, Florida 33317

LEE COUNTY, FLORIDA  
AERIAL-MAPPING PROJECT

MAPPING BY  
HAMRICK AERIAL SURVEYS, INC.  
CLEARWATER, FLORIDA

Marker Designation TBM FMBV-5 County LEE State FL

Located in Sec. 13 Twp. 46 S, Rge. 23 E U.S.G.S. Quad Map FT MYERS BEACH 7.5min

To reach point from INT. OF SAN CARLOS BLVD / RT. 865 & ESTERO BLVD. / RT. 965 (SIGNAL LIGHT) AT FT. MYERS BEACH; GO WINE ON SAN CARLOS BLVD. 1.0 MI. ± TO BRIDGE OVER HURRICANE BAY & TBM

Type of Marker FLA. D.O.T. SURVEY MARK DISC Date set AUGUST 19 80

HORIZONTAL CONTROL originated on 2nd order control established by FLA. D. O. T. agency

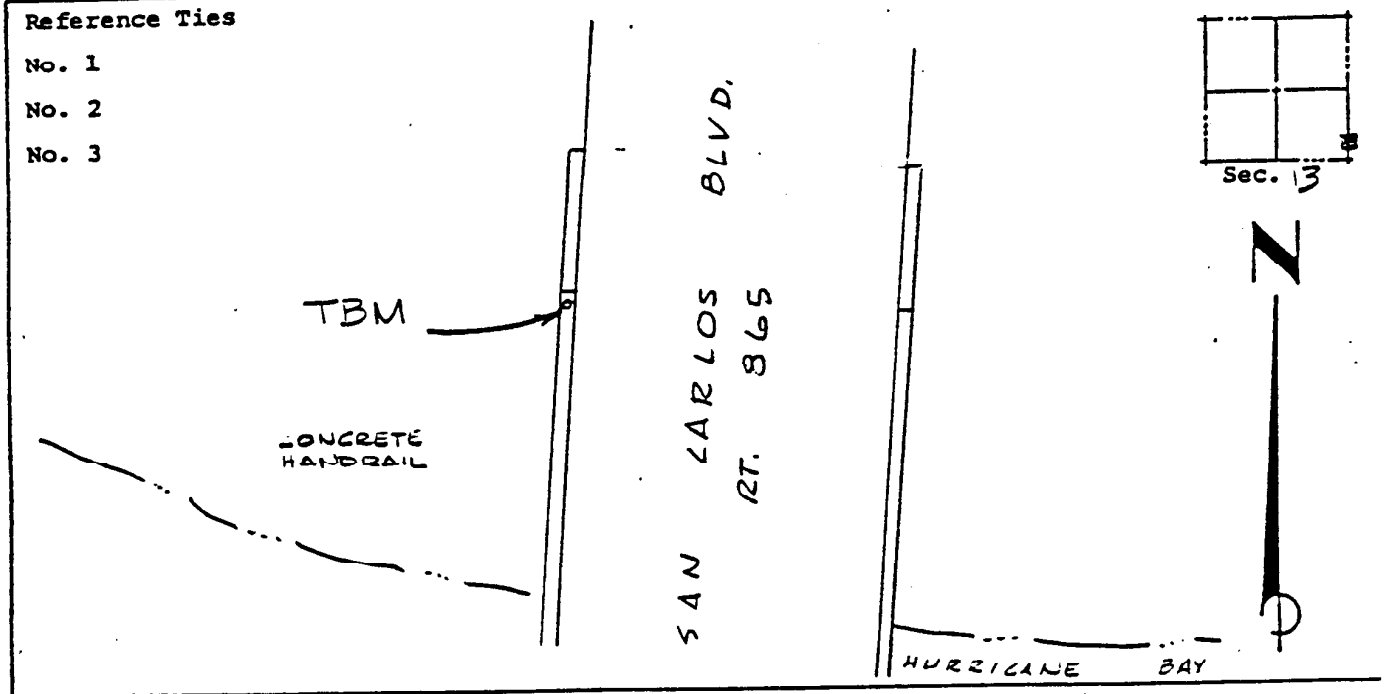
in year, on North American 1927 datum.

Coordinates: North (y) \_\_\_\_\_ East (x) \_\_\_\_\_  
(feet) 3rd Order State and Zone Florida, Mercator West

Reference Bearings to Station or Object:

Description	Bearing	Distance
_____	_____	_____
_____	_____	_____
_____	_____	_____

Field Book \_\_\_\_\_ Page \_\_\_\_\_ Sketch by D. W. ALBERTSEN



VERTICAL CONTROL originated on 1st order control established by USGS agency

in 1966, on National Geodetic Survey Datum of 1929 datum.

Elevation 11.47, 3rd Order Level Book V1 Page 26  
(feet)