



Deni Associates

7025 N.W. 4th St. · Plantation, Florida 33317

LEE COUNTY, FLORIDA
AERIAL MAPPING PROJEC

MAPPING BY
HAMRICK AERIAL SURVEYS, INC.
CLEARWATER, FLORIDA

Marker Designation TBM - FMBV-8 County LEE State FL

Located in Sec. 12 Twp. 23 E. Rge. 46 S. U.S.G.S. Quad Map FT MYERS BEACH 7.5min

To reach point from INT. OF RT. 865/SAN CARLOS BLVD. & RT. 867/
MC GREGOR BLVD IN SEC. 31-45-24: 60 SW 1.9 MI. ± TO
JOHN MORRIS RD; THENCE S. 1.3 MI. ± TO TBM.

Type of Marker PK NAIL & TIN IN TOP OF 1" DIA. WOOD POST Date set AUGUST 19 80

HORIZONTAL CONTROL originated on 2nd order control established by FLA. D. O. T. agency

in year, on North American 1927 datum.

Coordinates: North (y) _____ East (x) _____
(feet)

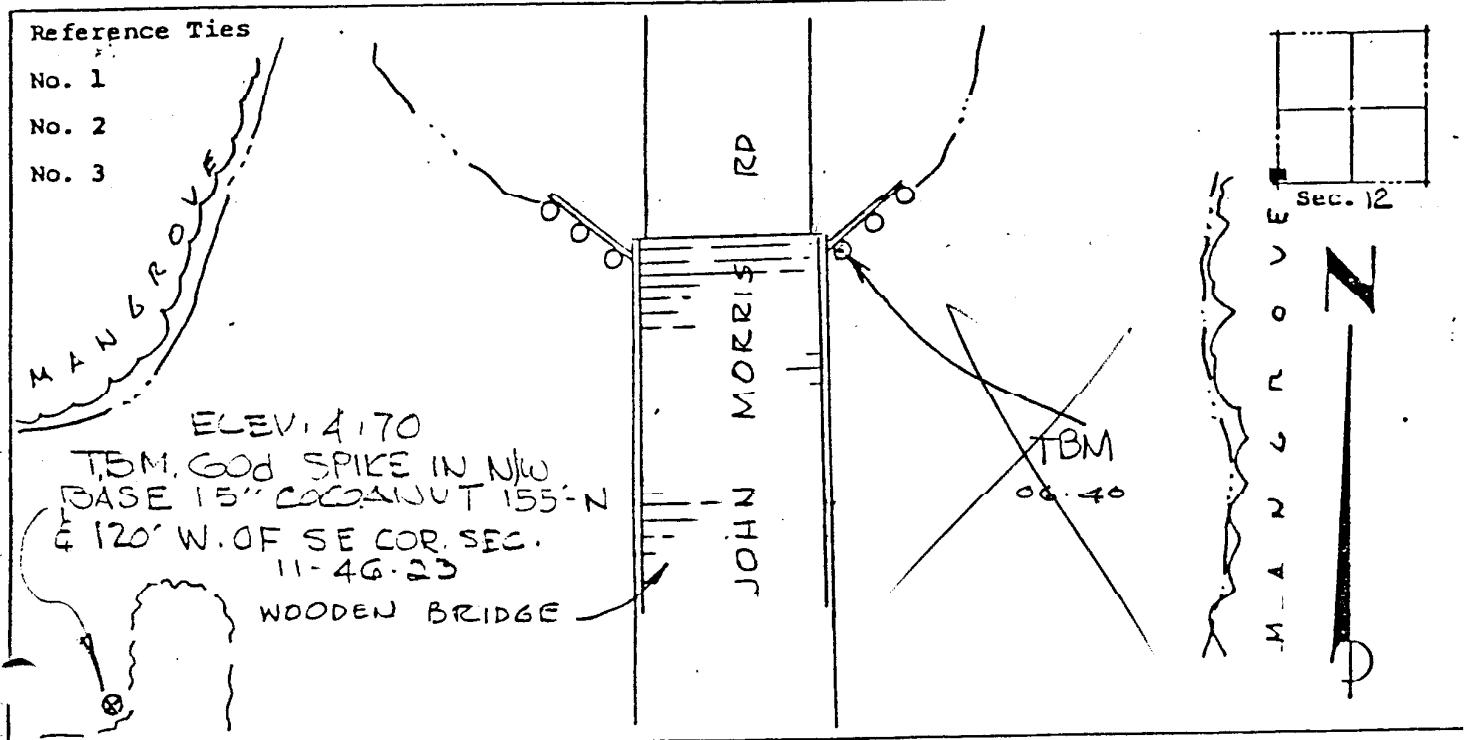
3rd Order

State and Zone Florida, Mercator West

Reference Bearings to Station or Object:

Description	Bearing	Distance

Field Book _____ Page _____ Sketch by D. W. ALBERTSEN



VERTICAL CONTROL originated on 1st order control established by USCG 65 agency

in 1966 year, on National Geodetic Survey Datum of 1929 datum.
06.40 2nd Order Level Book V1 Page 23